



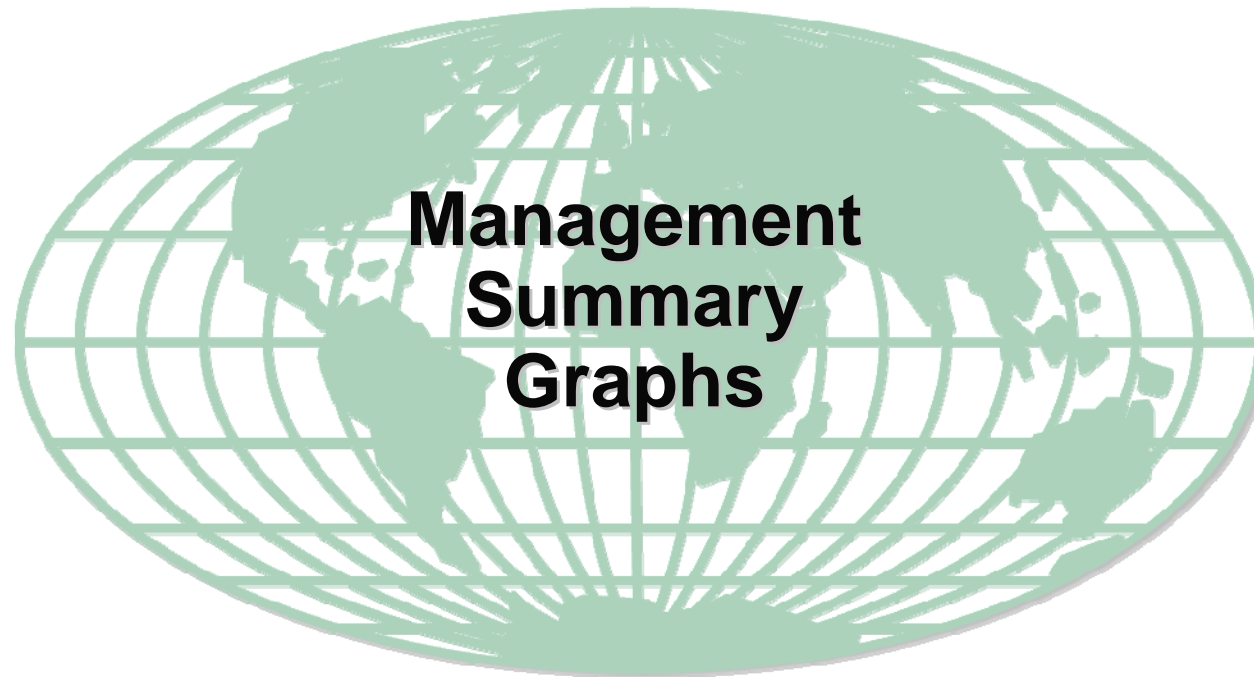
## IBM Performance Management for Power Systems

[www.ibm.com/systems/power/support/perfmgmt/](http://www.ibm.com/systems/power/support/perfmgmt/)



# Performance Management for Power Systems: Interactive Graphing Support for IBM AIX

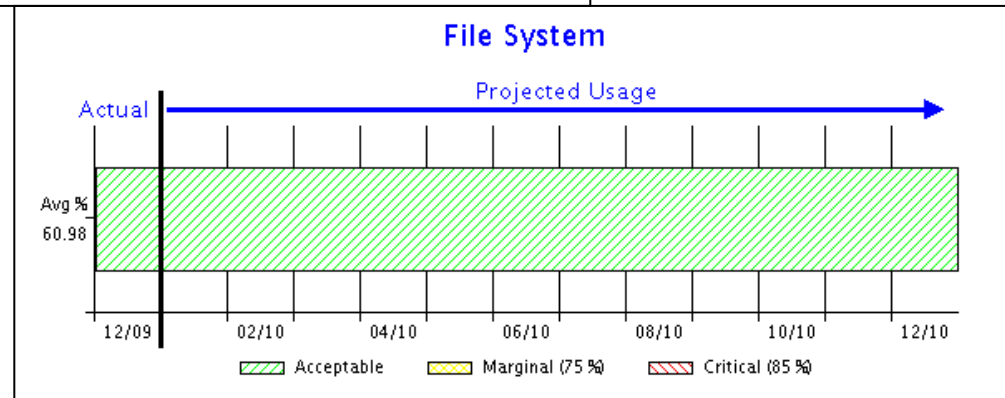
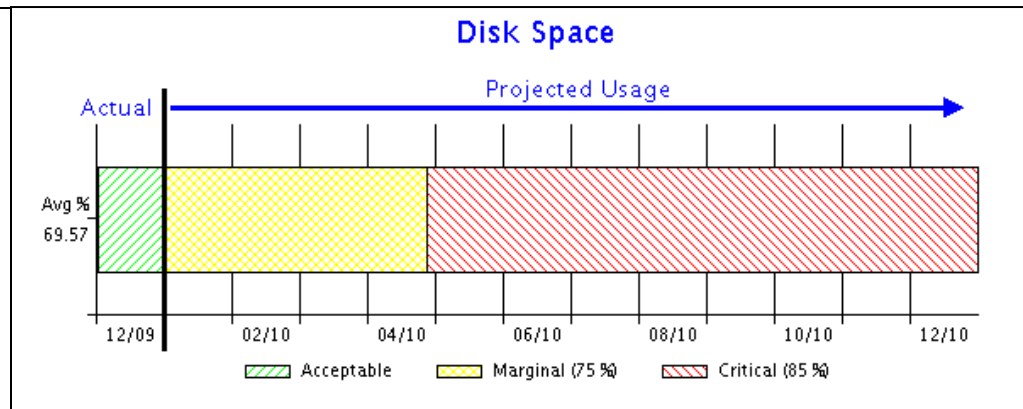
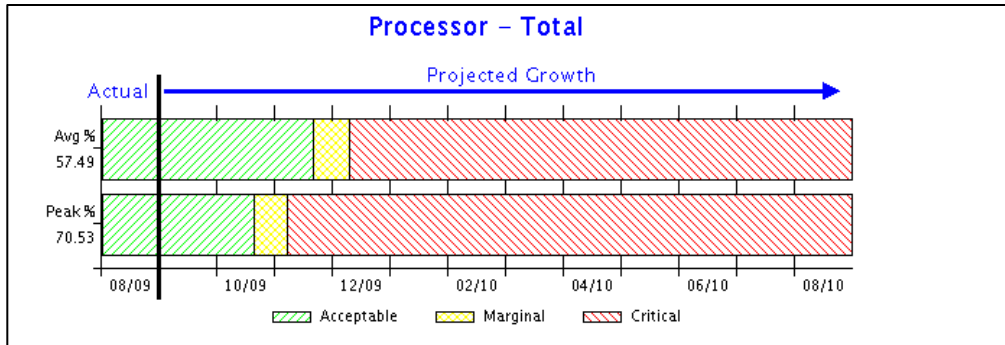
[www.ibm.com/systems/power/support/perfmgmt/](http://www.ibm.com/systems/power/support/perfmgmt/)



The Management Summary Graphs are available for servers/LPARs that are entitled at the summary / No Additional Charge level.

Entitlement is earned when the system is under hardware warranty or covered under an IBM Hardware Maintenance Agreement

# Management Summary Graphs



This data is available for no additional charge if the system is under warranty or on an IBM Hardware Maintenance Agreement.

The individual graphs are accessed interactively by the user and are then printable as Individual graphs. A pdf version is also available.

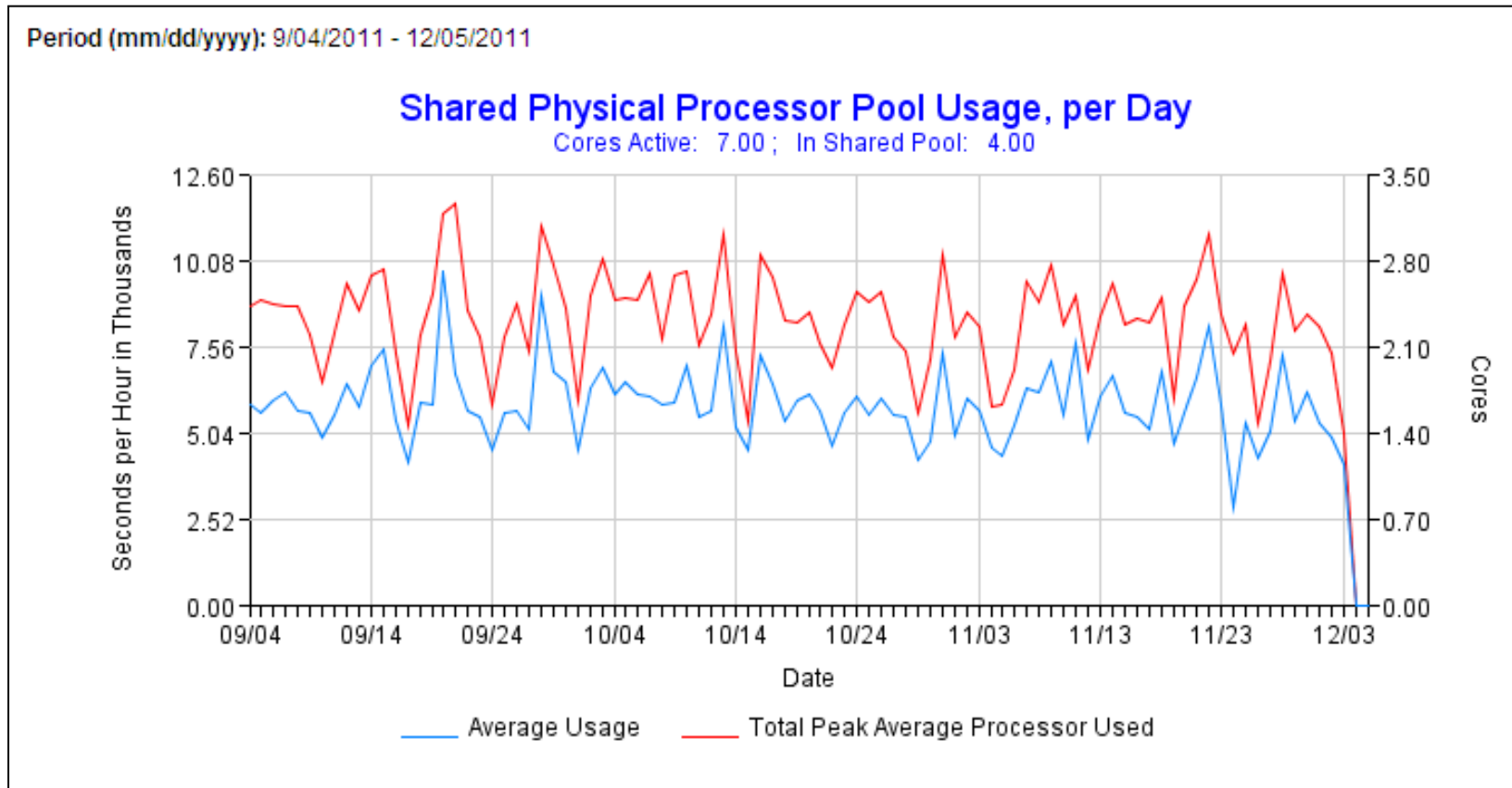
The user does have the ability to go 'backwards in time' to select the month of interest. (up to 24 mos.)



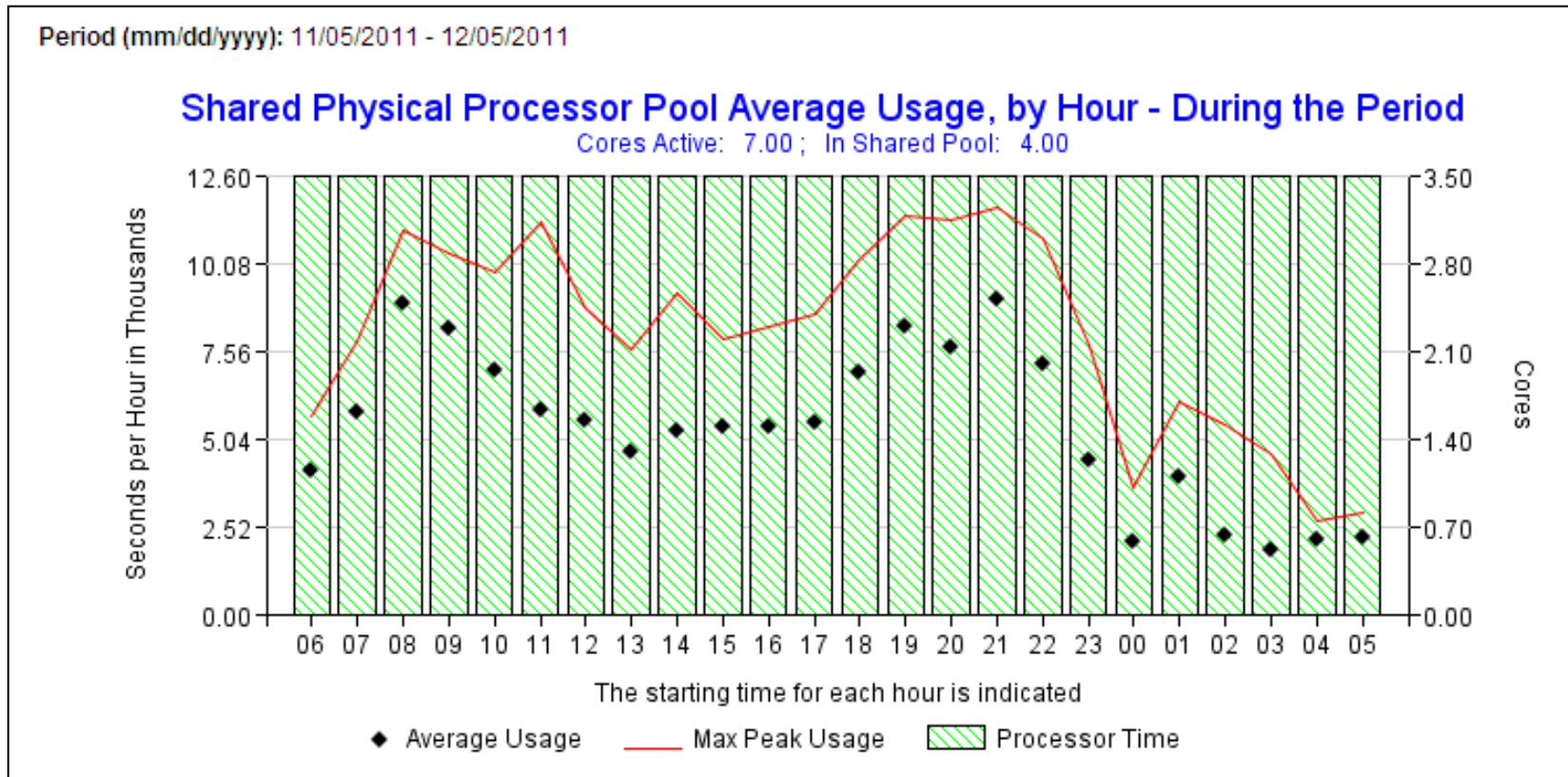
The following reports are available for servers/LPARs that are entitled at the Full Function level of PM for Power Systems.

Contact IBM or and IBM Business Partner for terms and conditions in your country.

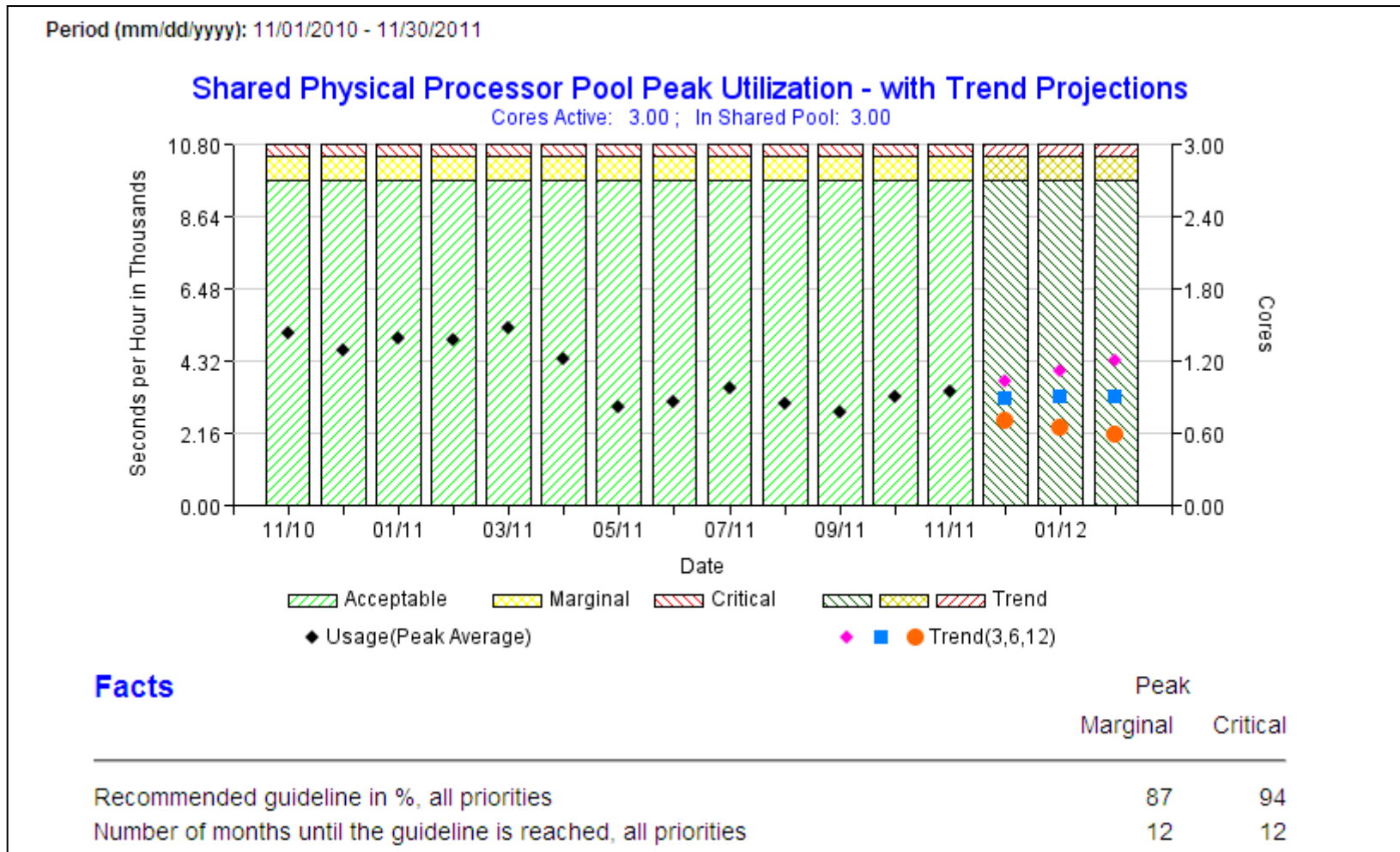
## Shared Physical Processor Pool Usage, per Day



## Shared Physical Processor Pool Average Usage, by Hour – During the Period



## Shared Physical Processor Pool Peak Utilization – with Trend Projections



# Interactive Graphing

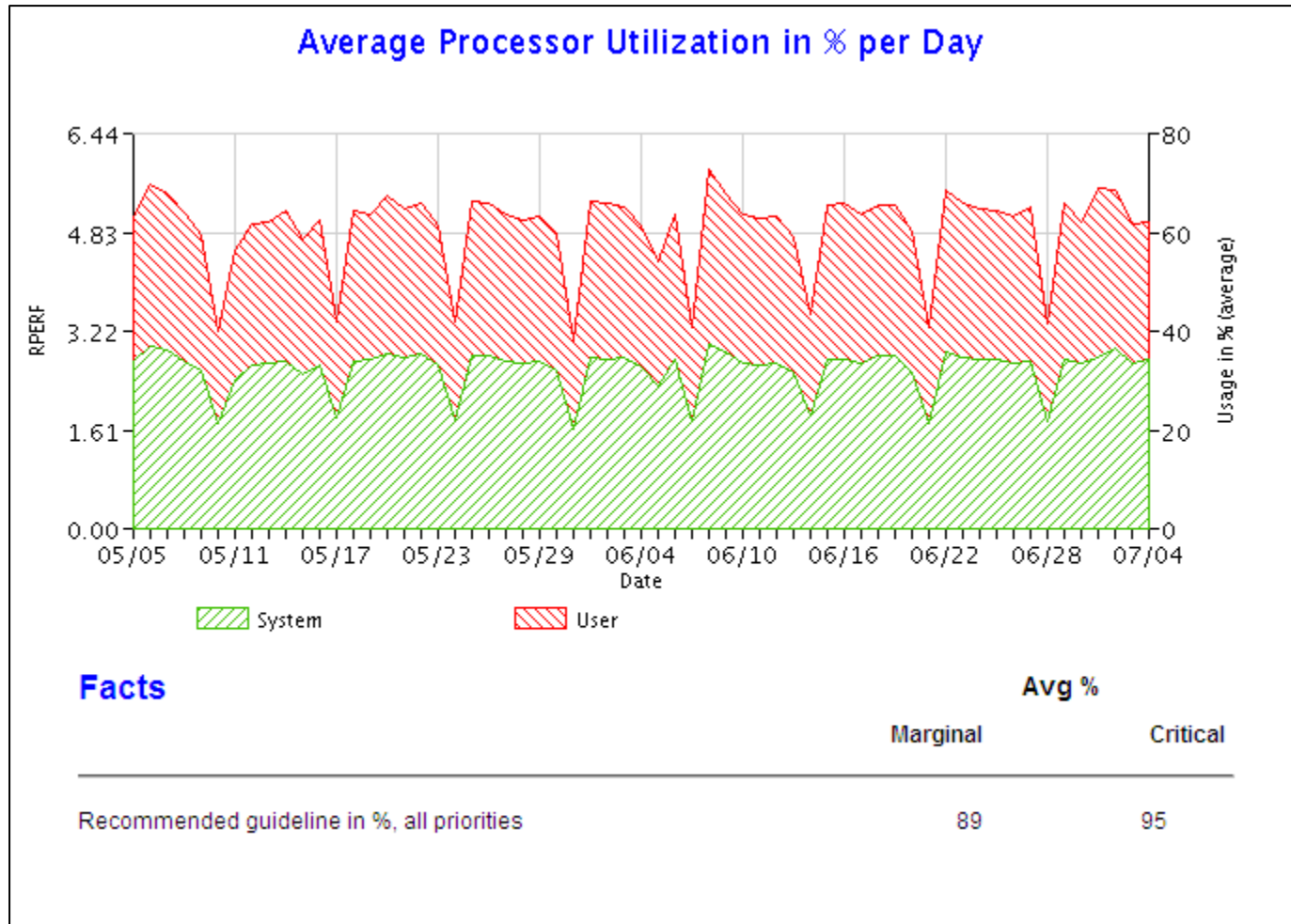
- **Detailed reports are available on most graphs with the full function option of PM for Power Systems (and on the Management Summary graph which is entitled with the no additional charge offering).**
- **You are able to view monthly, daily, and hourly level reports.**
- **At the hourly level, you can customize a graph view down to a single day.**
- **The following graphs are examples of the reports that are available. You will notice that in many cases the performance guidelines are depicted on the graph.**

# Guidelines for Total Processor Utilization

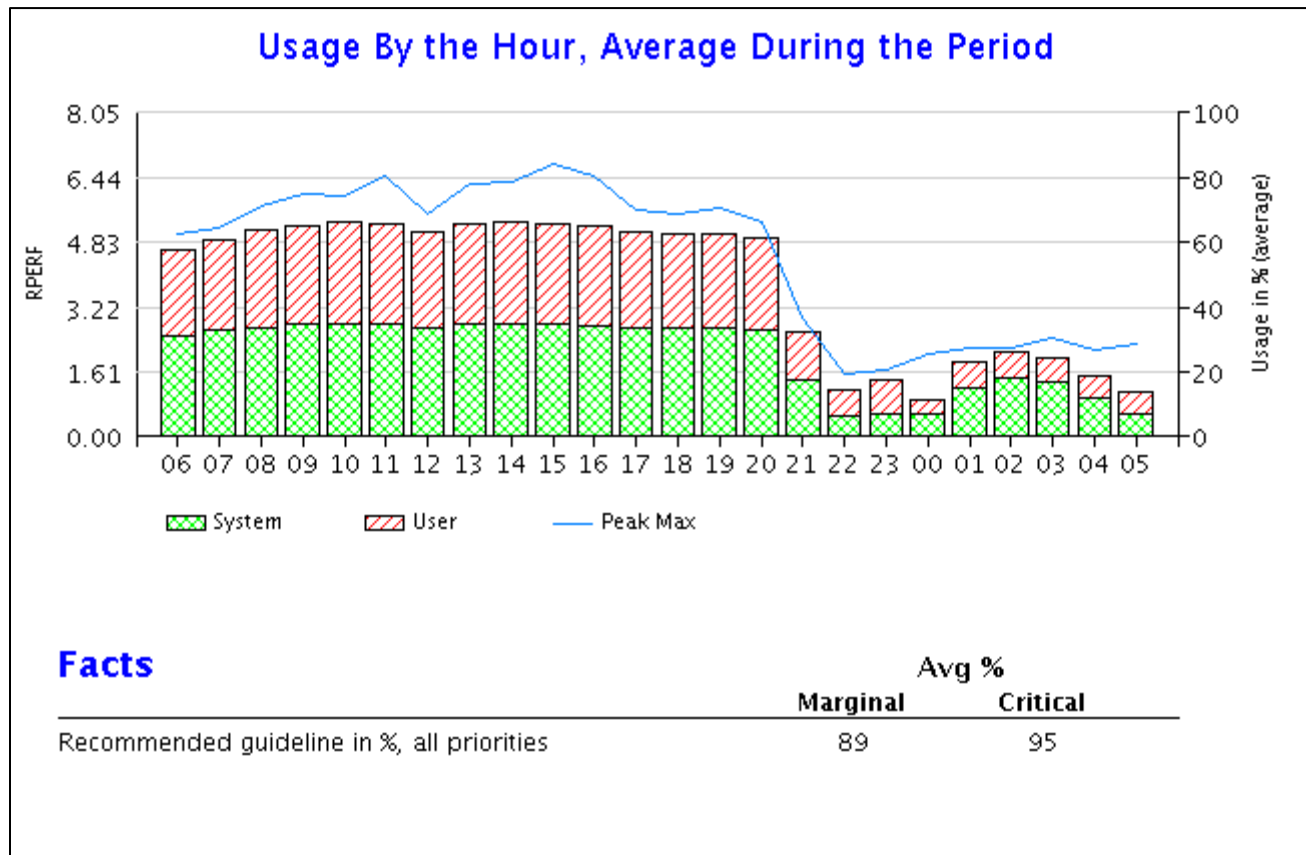
<b>Number of processors</b>	<b>Average marginal</b>	<b>Average critical</b>	<b>Peak marginal</b>	<b>Peak critical</b>
1	80%	90%	85%	94%
2	85%	93%	88%	96%
3	87%	94%	90%	97%
4	89%	95%	92%	98%
>4	93%	97%	95%	99%

These thresholds determine whether a resource is within guideline, marginal or critical in the following processor utilization reports.

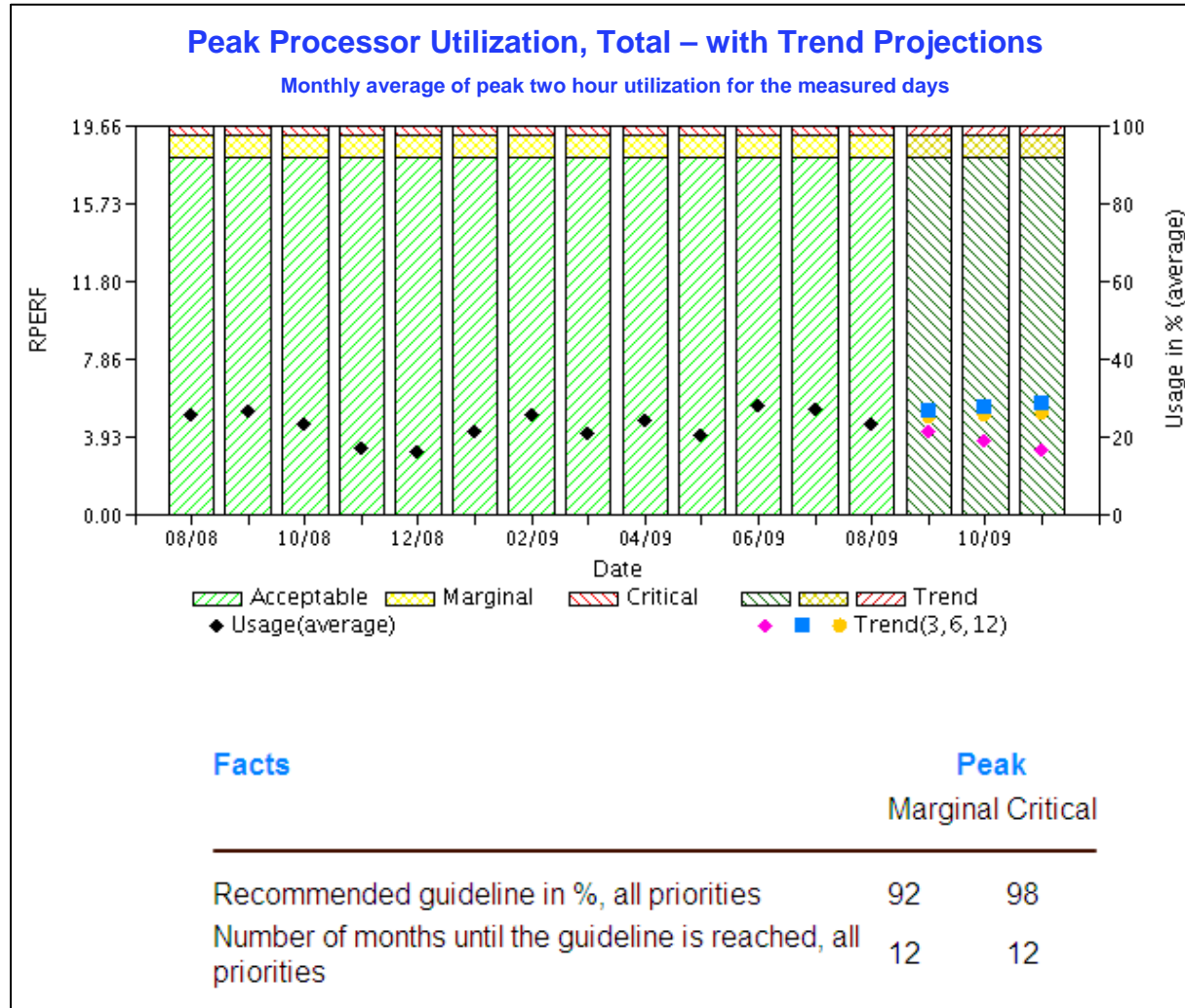
# Average Processor Utilization in % per Day (partition level)



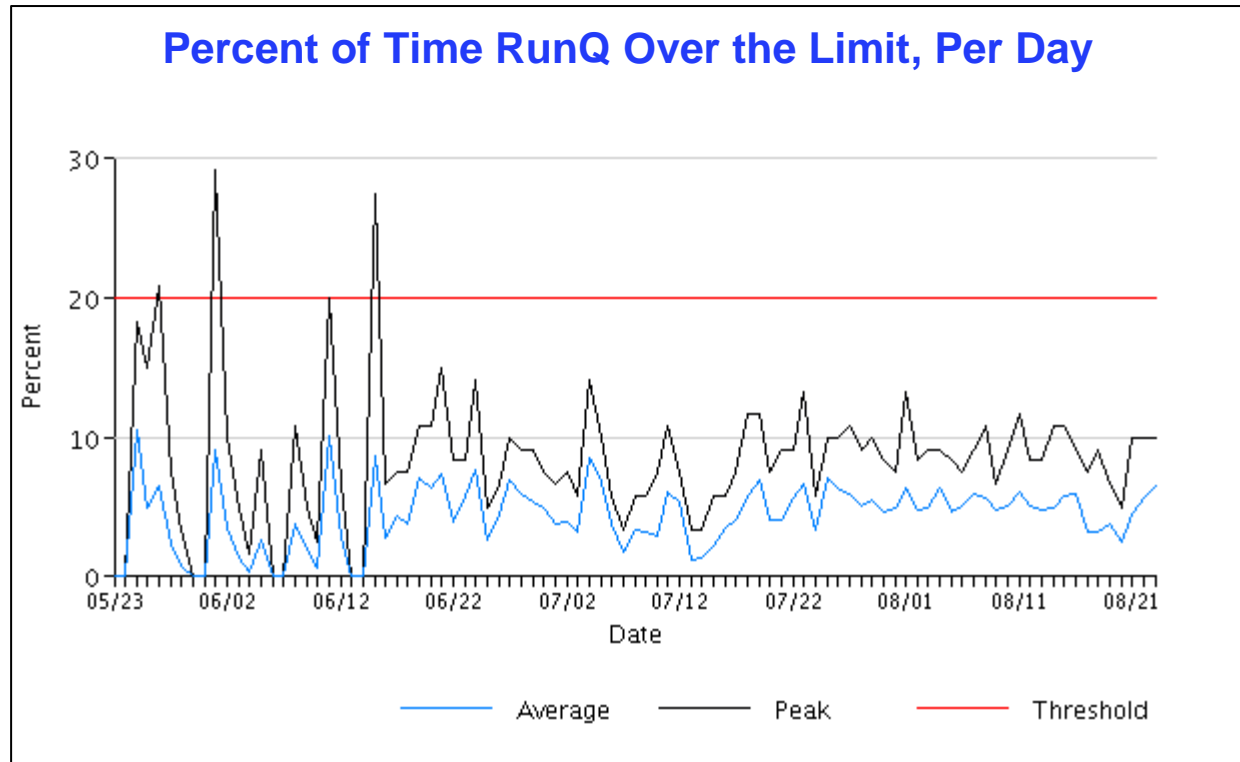
# Processor Utilization by Hour (partition level)



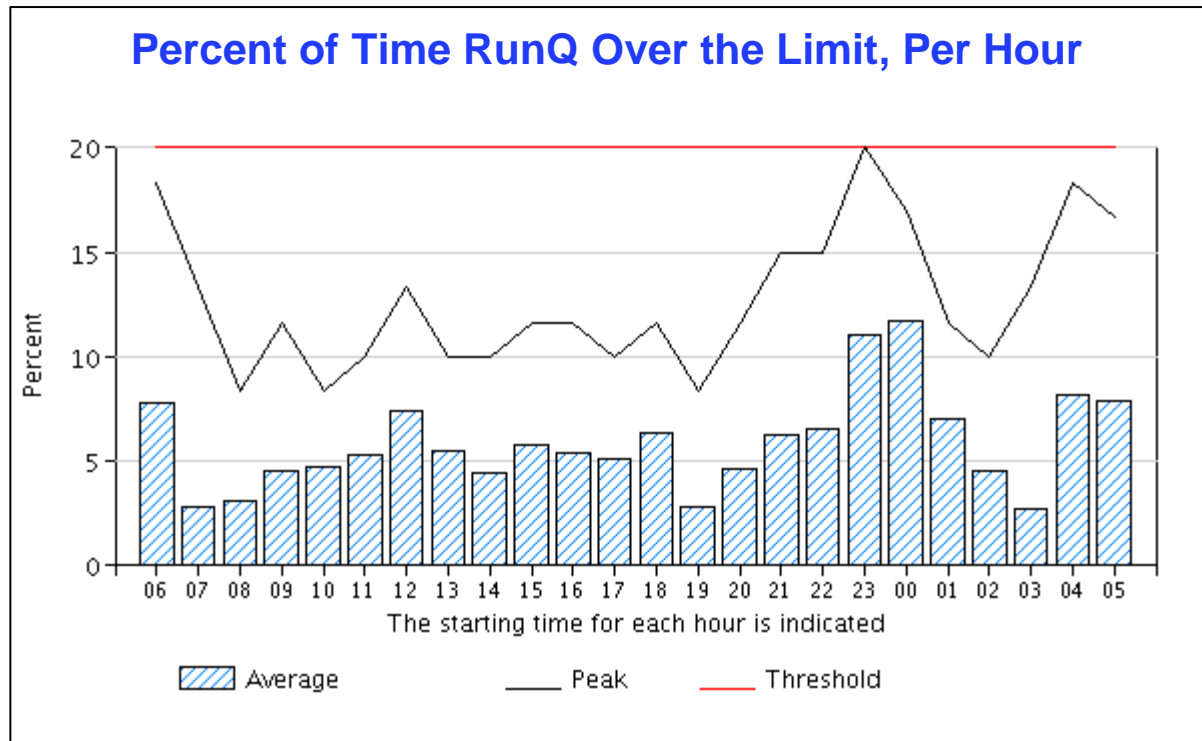
# Peak Processor Utilization, Total – with Trend Projections (partition level)



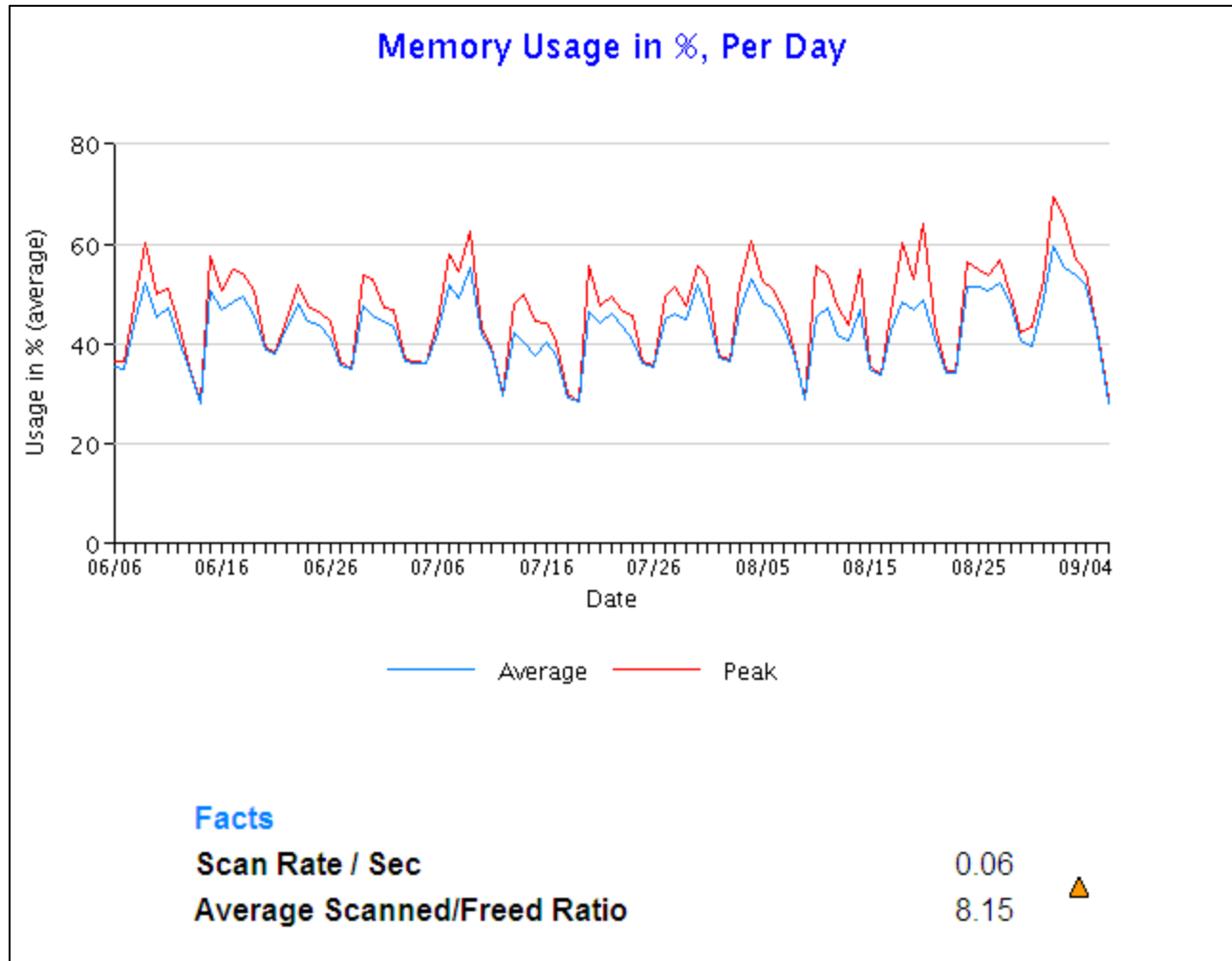
## Percent of time RunQ over the Limit, Per Day (partition level)



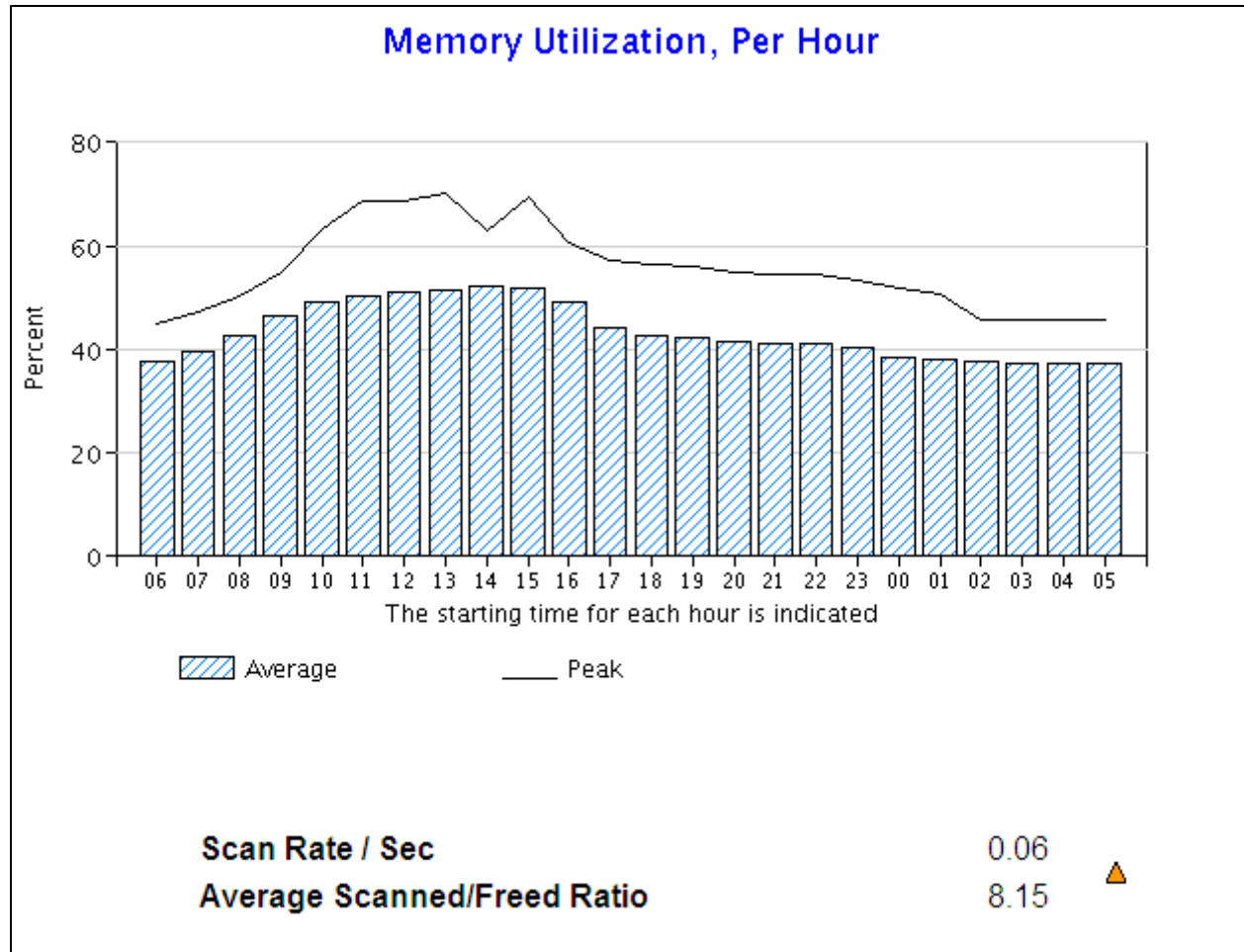
# Percent of Time RunQ Over the Limit, Per Hour (partition level)



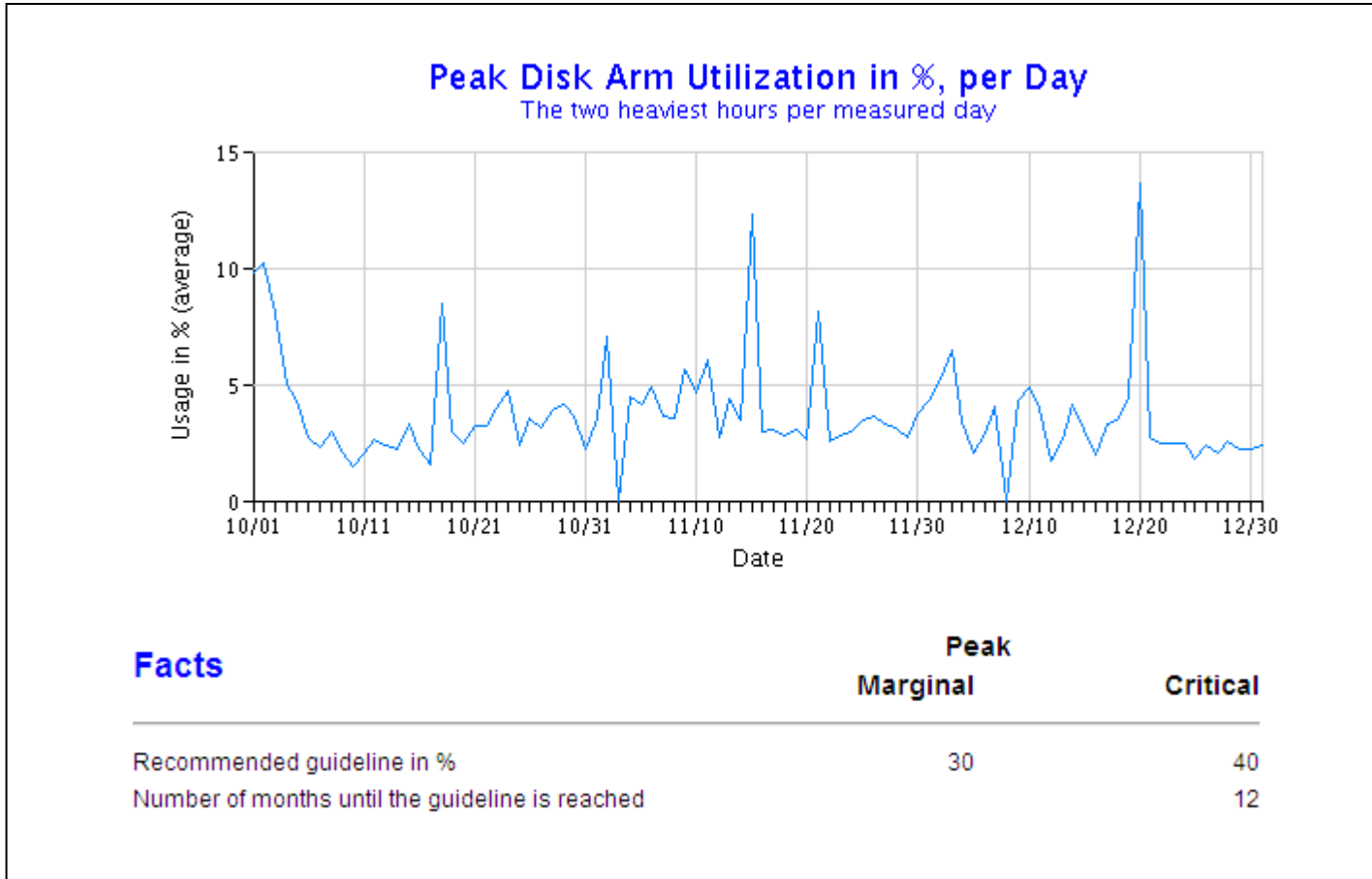
# Memory Usage in %, Per Day (partition level)



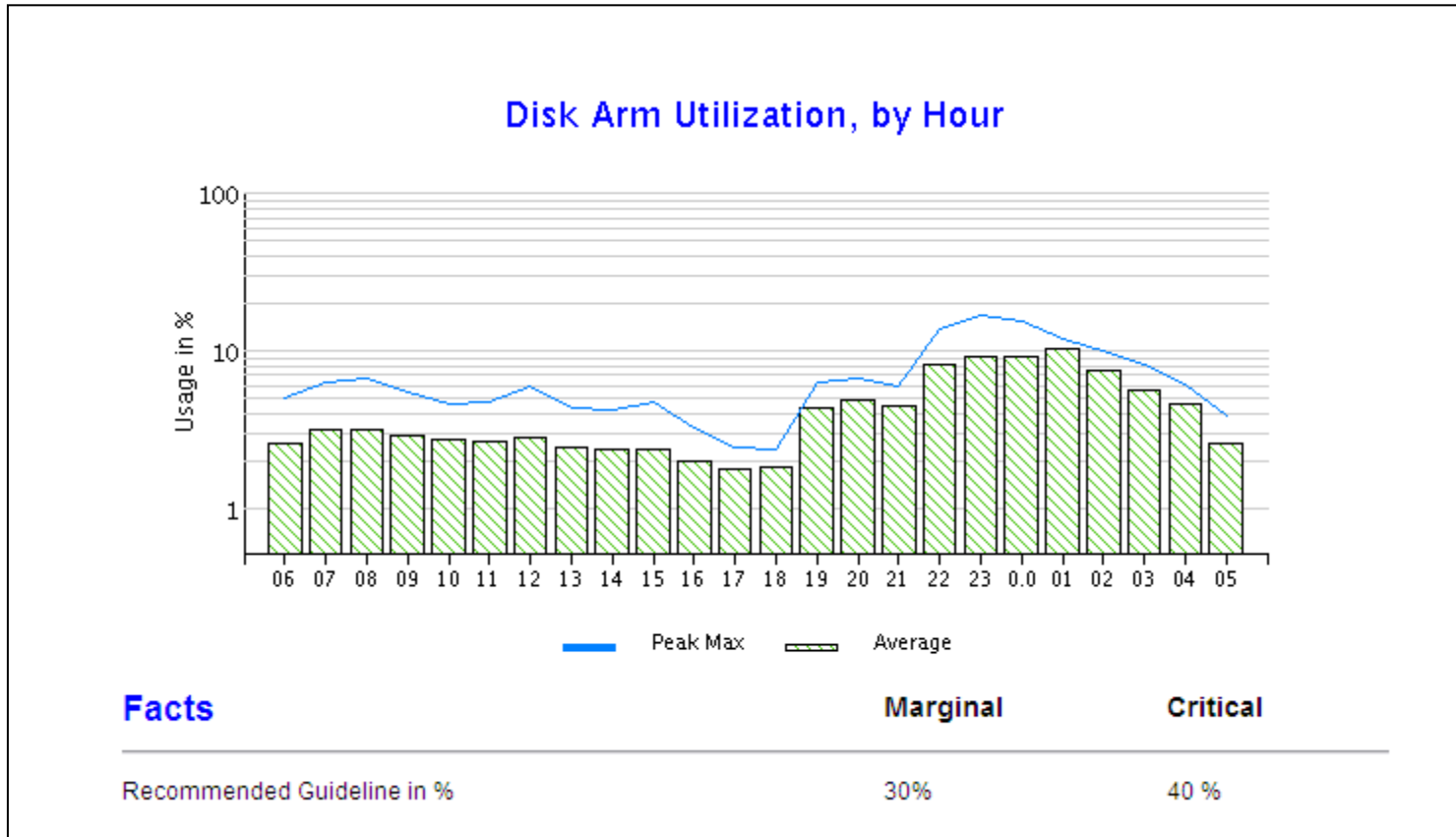
# Memory Utilization, Per Hour (partition level)



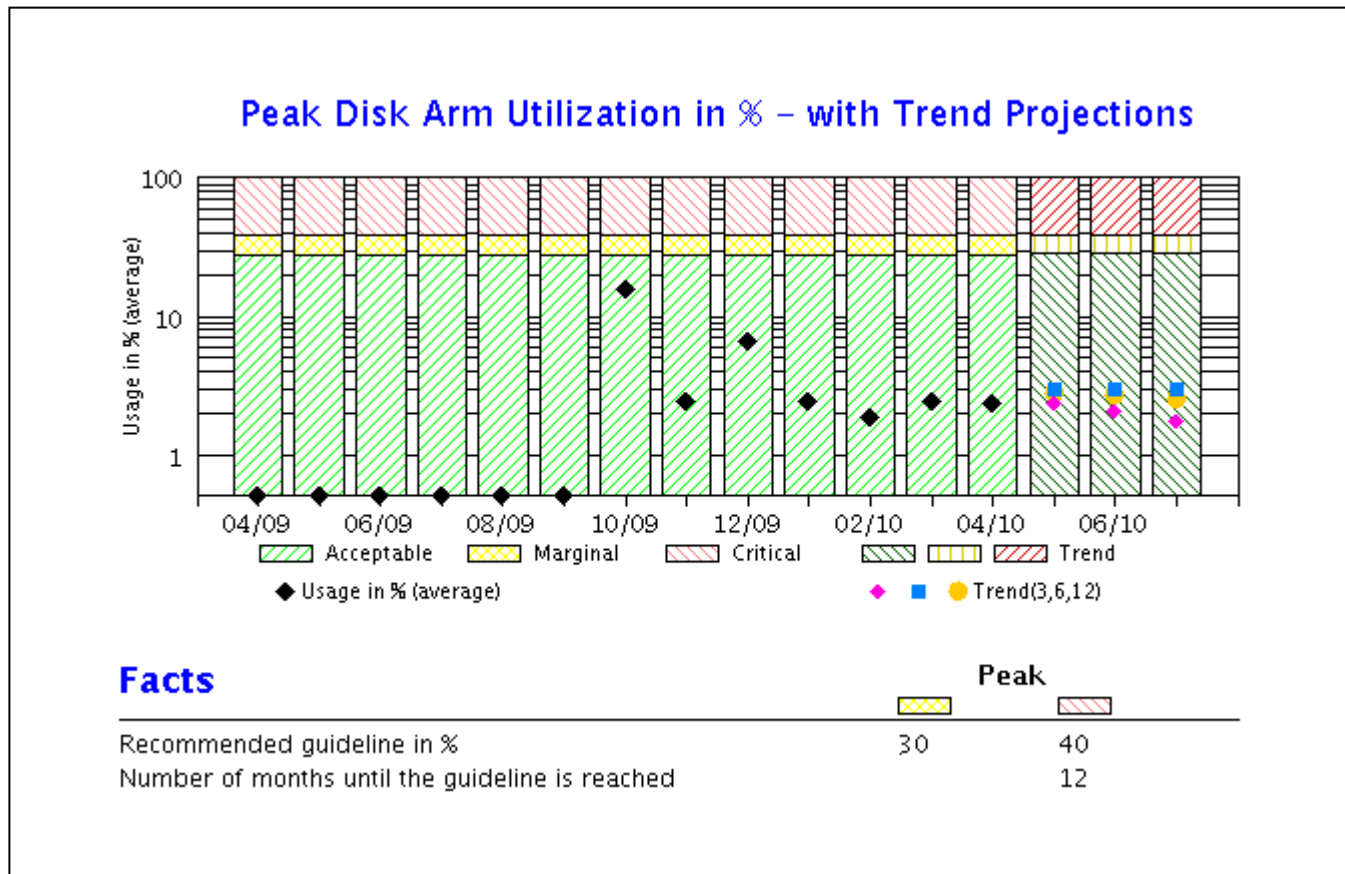
# Peak Disk Arm Utilization in % - Per Day (partition level)



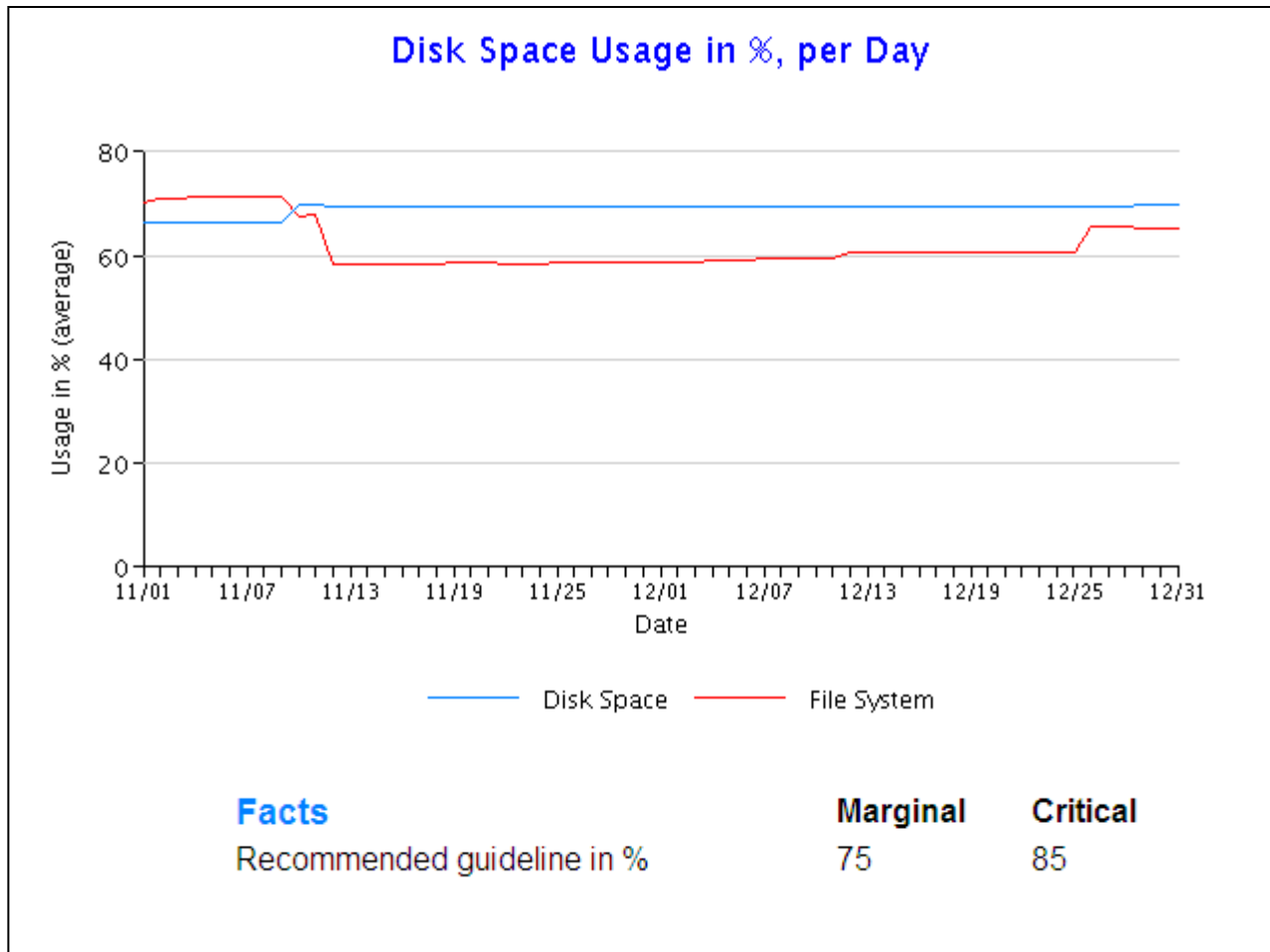
# Disk Arm Utilization by Hour (partition level)



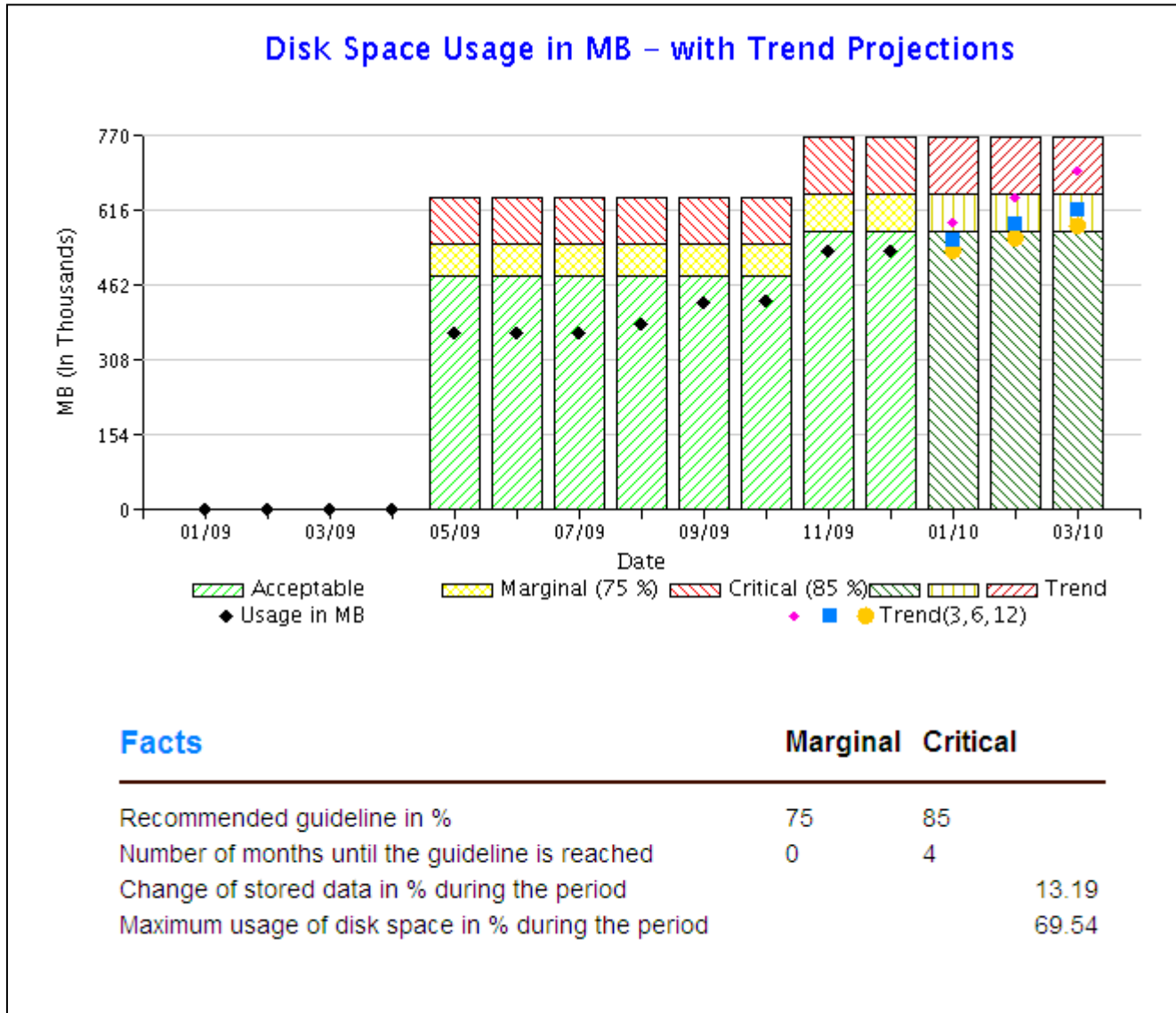
# Peak Disk Arm Utilization in % (partition level)



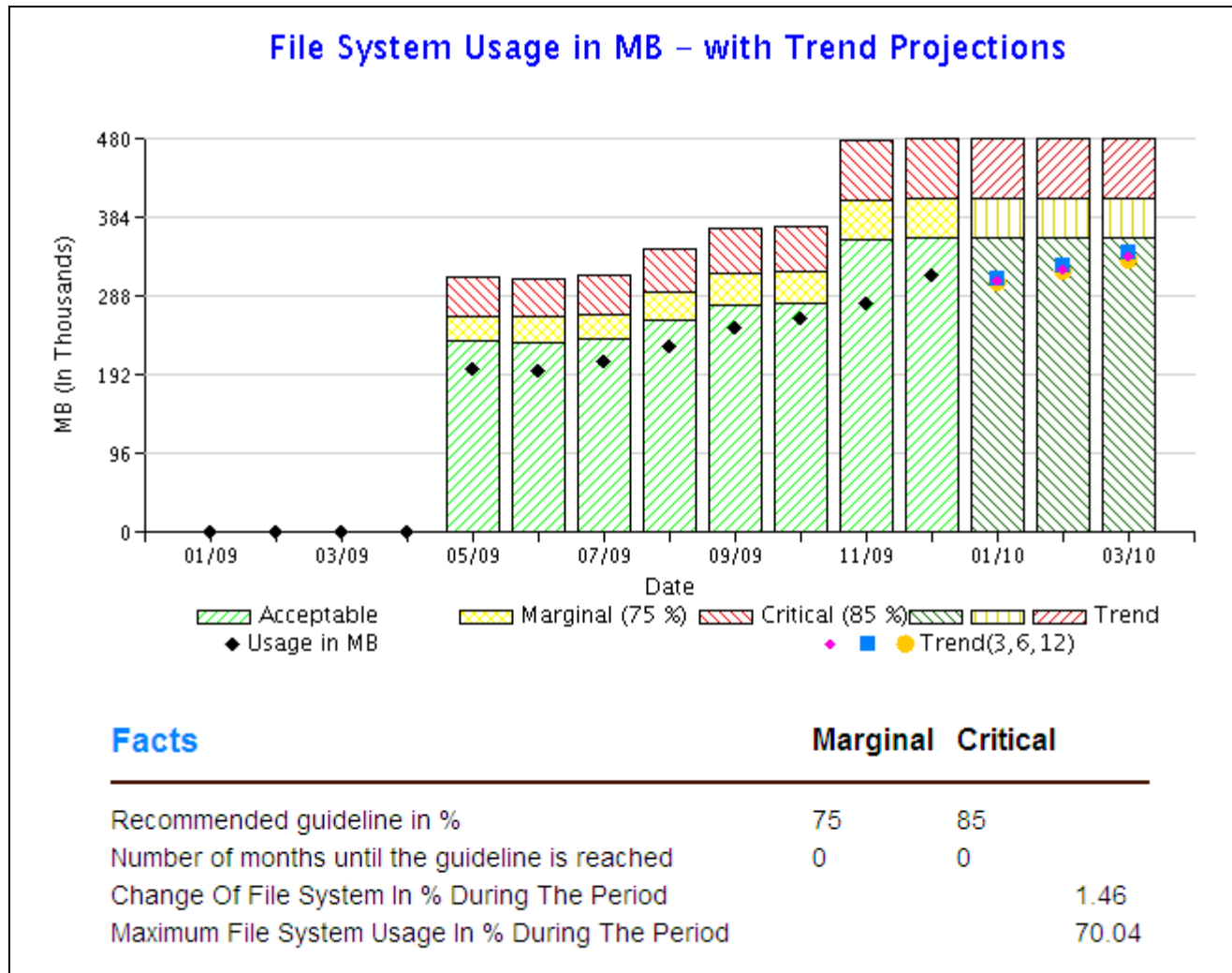
# Disk Space Usage in % - Per Day (partition level)



# Disk Space Usage in MB – with Trend Projections (partition level)

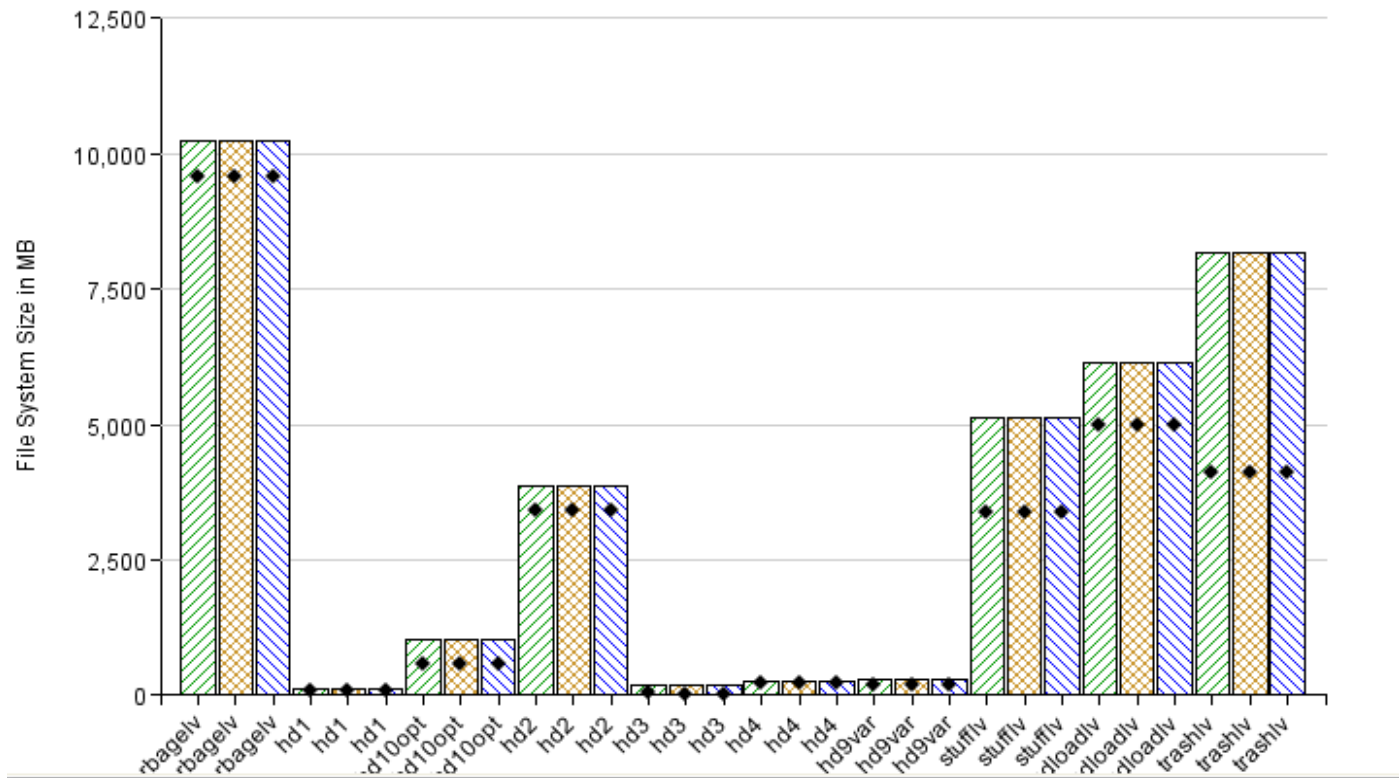


# File System Usage in MB – with Trend Projections (partition level)



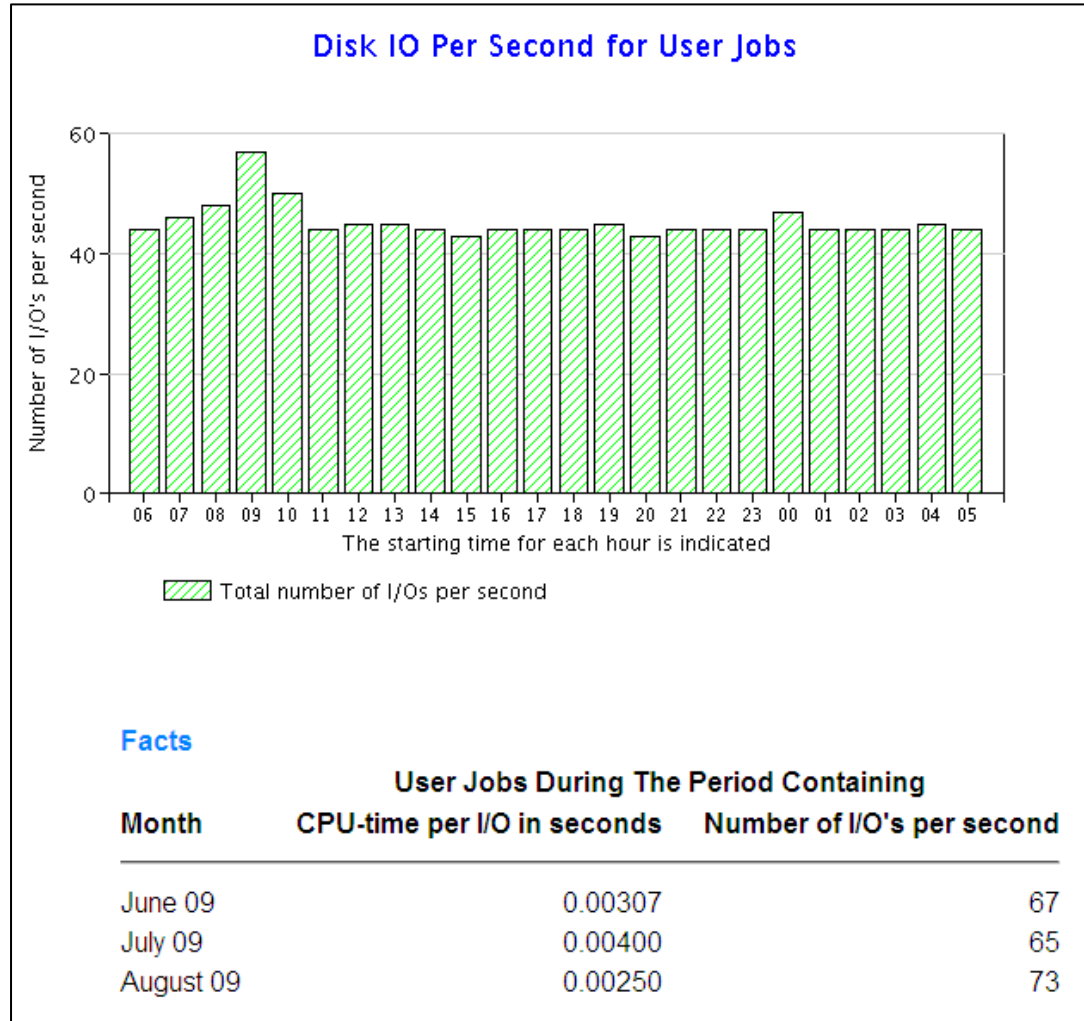
# Top 10 Most Heavily Used File Systems (partition level)

Top Ten Most Heavily Used File Systems  
3 Month Period

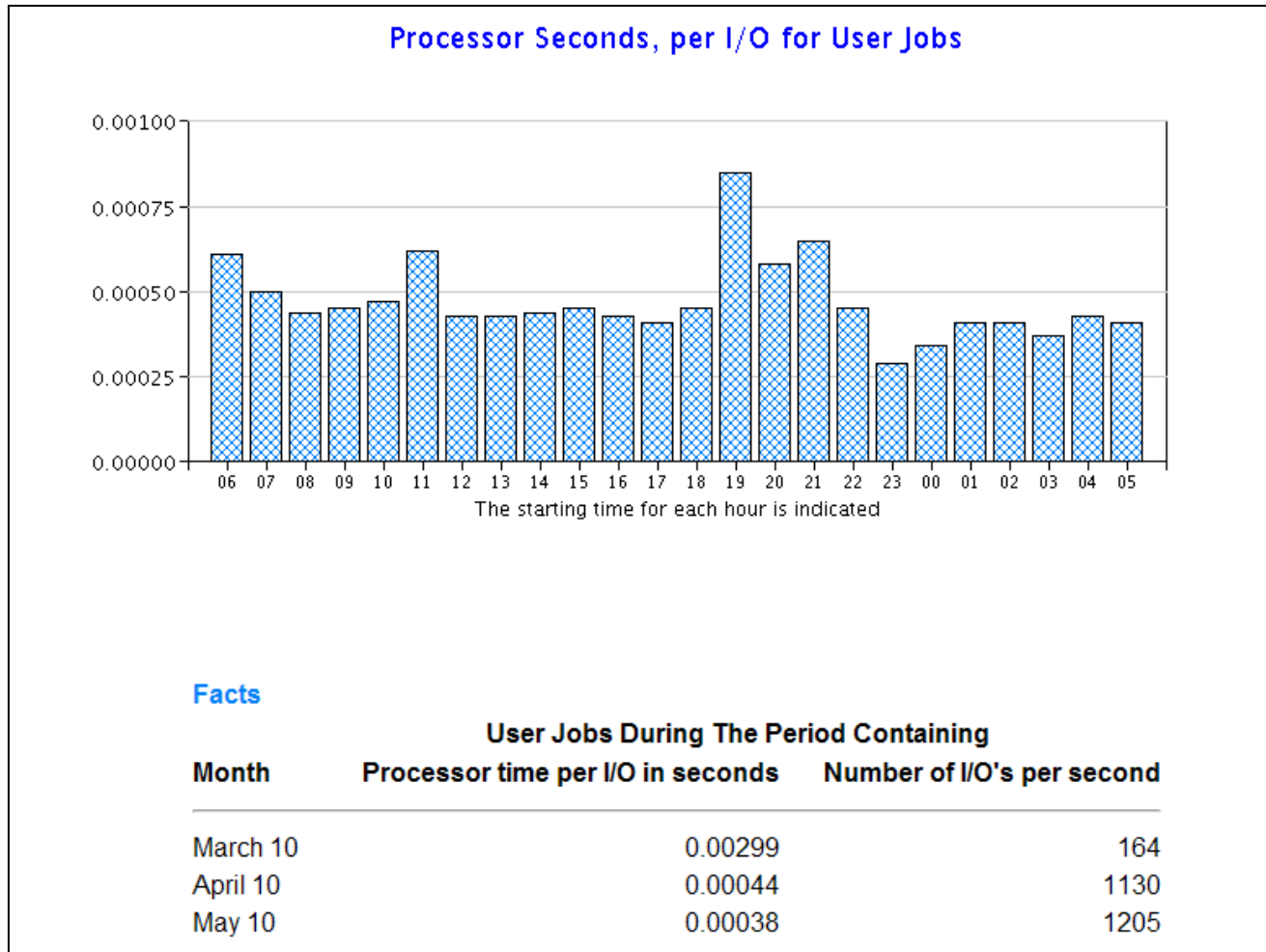


Three month history for top ten file systems making up the composite file system total for the partition

# Disk I/O Per Second for User Jobs (partition level)



# Processor Seconds Per I/O for User Jobs (partition level)



## Facts: System Resources Summary (partition level)

<b>System Resources Summary</b>	<b>Utilization in % Months</b>		
Processor Total	Avg %	27.97	12
	Peak	31.08	12
	Max	43.49	
Disk Space	Avg %	69.56	4
	Max	69.81	
File System Usage in MB - with Trend Projections	Avg %	65.42	12
	Max	65.42	
Memory	Avg %	96.44	0
	Peak	97.11	0
	Max	99.95	0

## For More Information

- See the Graph Reference Document at:

<http://www.ibm.com/systems/power/support/perfmgmt>

