

*Return to:*  
IBM CORPORATION  
PM DEV & WW OPS (005-2)  
3605 HIGHWAY 52 N  
ROCHESTER, MN 55901  
UNITED STATES

To:  
AIX-DEMO IBM  
PM for Power Systems  
3605 Hwy 52 N  
Bldg 020-2/D106  
Rochester MN 55901  
United States

## **IBM Performance Management for Power Systems**

This is the IBM PM for Power Systems report for the server AIX-DEMO, month ending April 2011.

For more information about PM reports, visit

<http://www.ibm.com/systems/power/support/perfmgmt/>

**IBM PM Development and Worldwide Operations**

## Table of Contents:

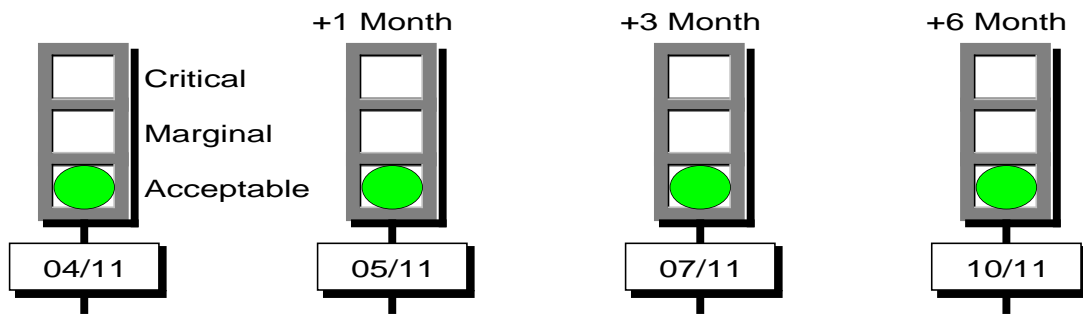
1. Executive Summary. . . . .	3
A. Processor	
B. Disk Space	
C. File System	
2. Management Summary. . . . .	4
A. Processor	
B. Disk Space	
C. File System	
3. Jobs - I/O Statistics. . . . .	5
A. Disk I/O, per Second for User Jobs	
B. Processor Seconds, per I/O for User Jobs	
4. Processor Utilization. . . . .	6
A. Processor Utilization, by the Hour	
B. Average Processor Utilization in %, per Day	
5. RunQ Over Limit. . . . .	7
A. Percent of Time RunQ Over the Limit, per Hour	
B. Percent of Time RunQ Over the Limit, per Day	
6. Peak Processor Utilization - Trend. . . . .	8
A. Peak Processor Utilization, Total - with Trend Projections	
7. Memory Usage. . . . .	9
A. Memory Utilization, per Hour	
B. Memory Usage in %, per Day	
8. Disk Space Usage. . . . .	10
A. Disk Space Usage in %, per Day	
B. Disk Space Usage in MB - with Trend Projections	
9. File System Usage. . . . .	11
A. Top Ten Most Heavily Used File Systems	
B. File System Usage in MB - with Trend Projections	
10. Disk Arm Utilization. . . . .	12
A. Disk Arm Utilization, by Hour	
B. Peak Disk Arm Utilization in %, per Day	
11. Disk Arm Utilization - Trend. . . . .	13
A. Peak Disk Arm Utilization in % - with Trend Projections	
12. Management Summary Facts. . . . .	14

# Executive Summary

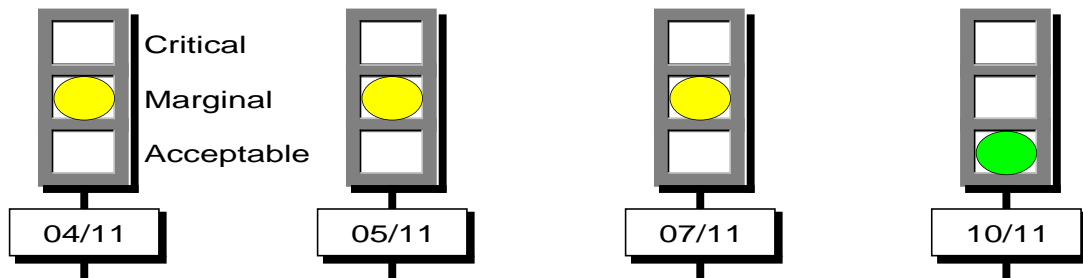
AIX-DEMO IBM  
Month Ending April 2011  
Shift 1 (08:00 - 17:30)

AIX-DEMO 5.3.0.0 (06VMSRG-0002)  
Model 9119 595 Cores (CPU) 5.00  
Disk Capacity 140 GB  
Internal Memory 30719 MB

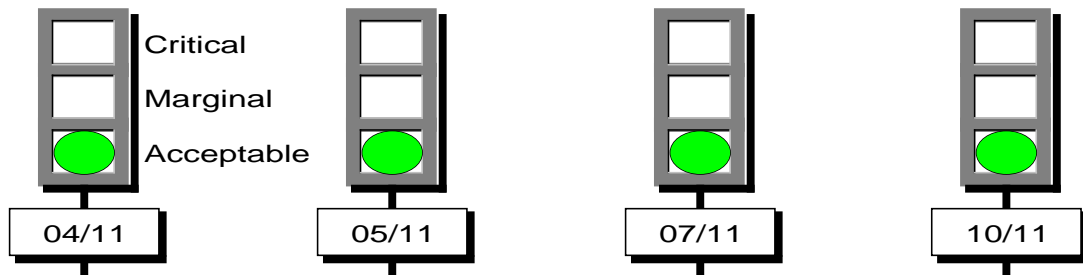
## Processor



## Disk Space



## File System

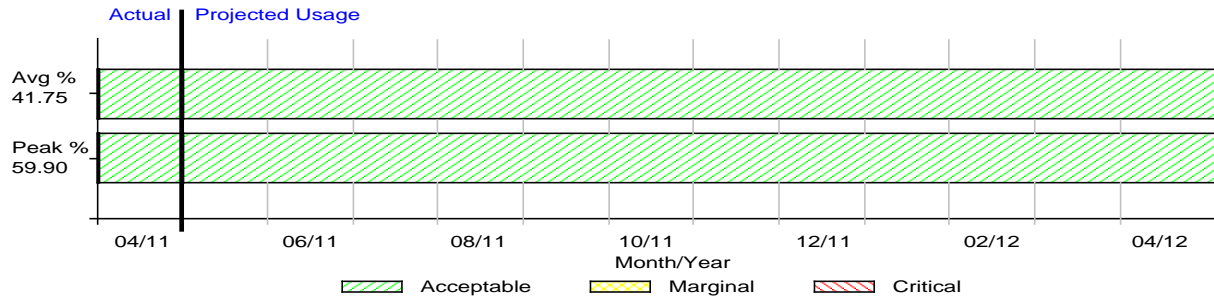


# Management Summary

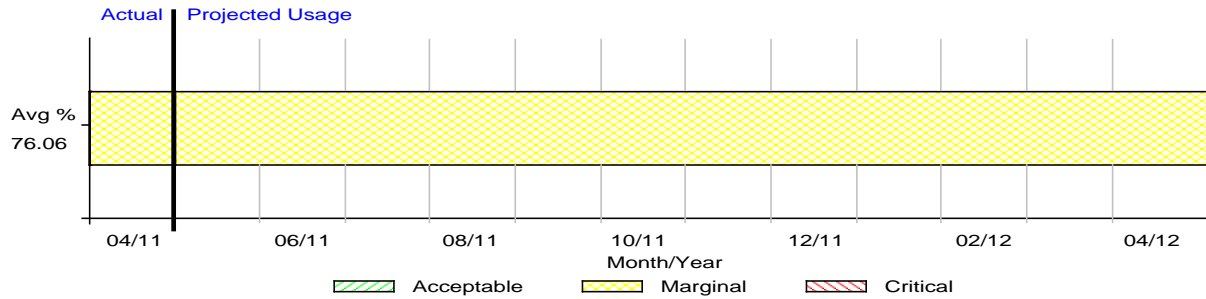
AIX-DEMO IBM  
Month Ending April 2011  
Shift 1 (08:00 - 17:30)

AIX-DEMO 5.3.0.0 (06VMSRG-0002)  
Model 9119 595 Cores (CPU) 5.00  
Disk Capacity 140 GB  
Internal Memory 30719 MB

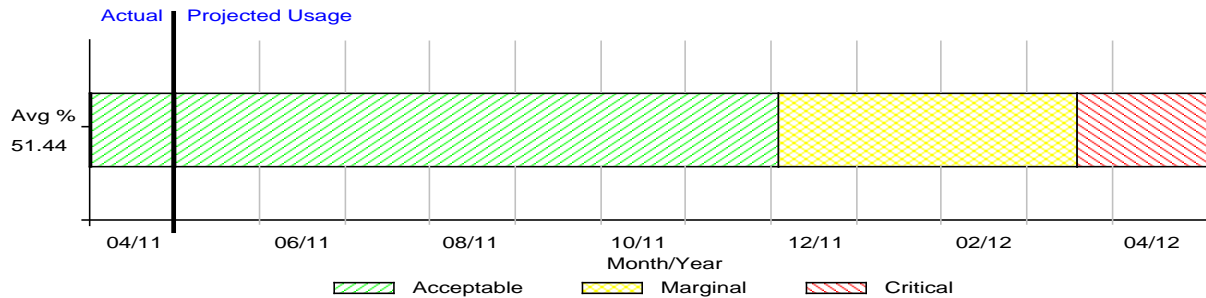
## Processor



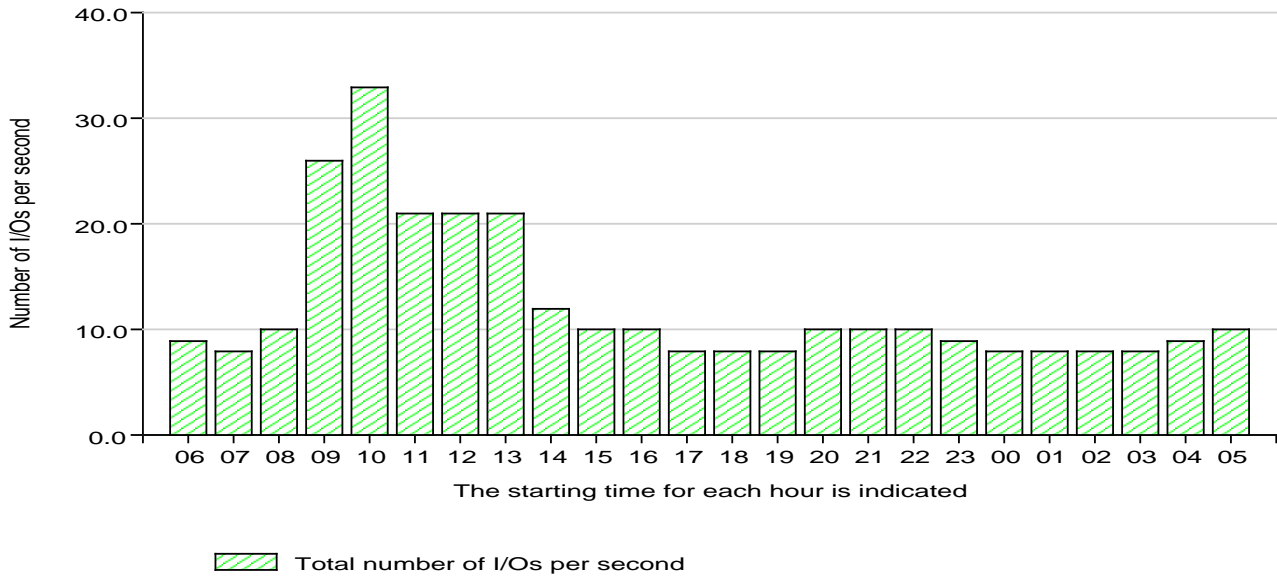
## Disk Space



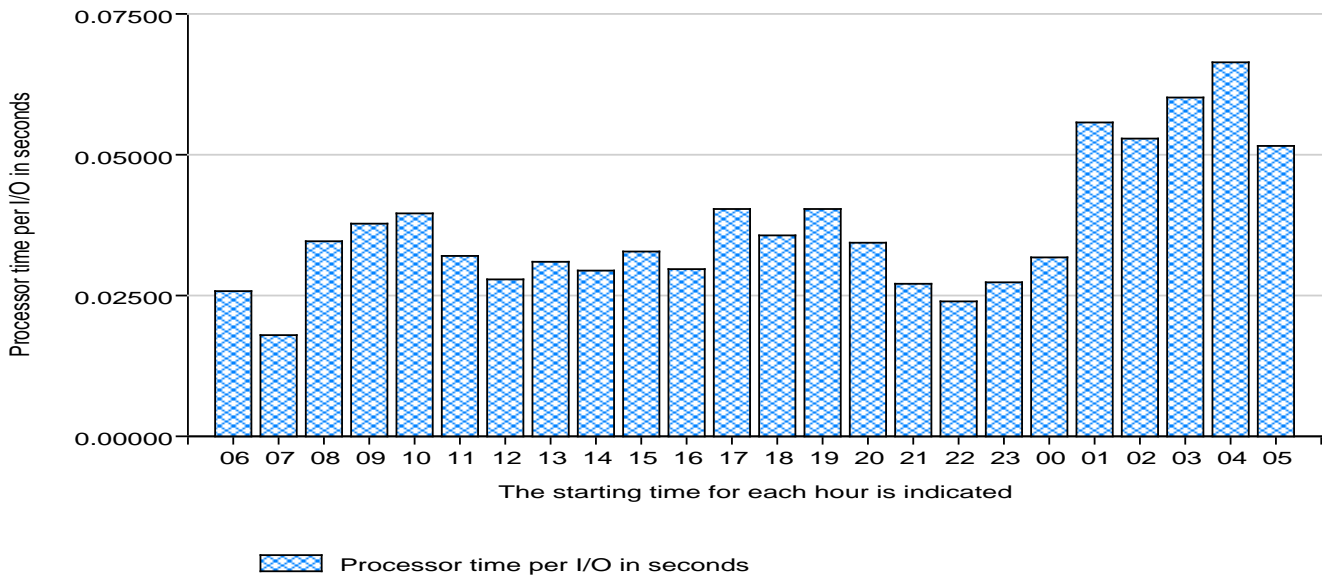
## File System



Disk I/O, per Second for User Jobs



Processor Seconds, per I/O for User Jobs



Facts

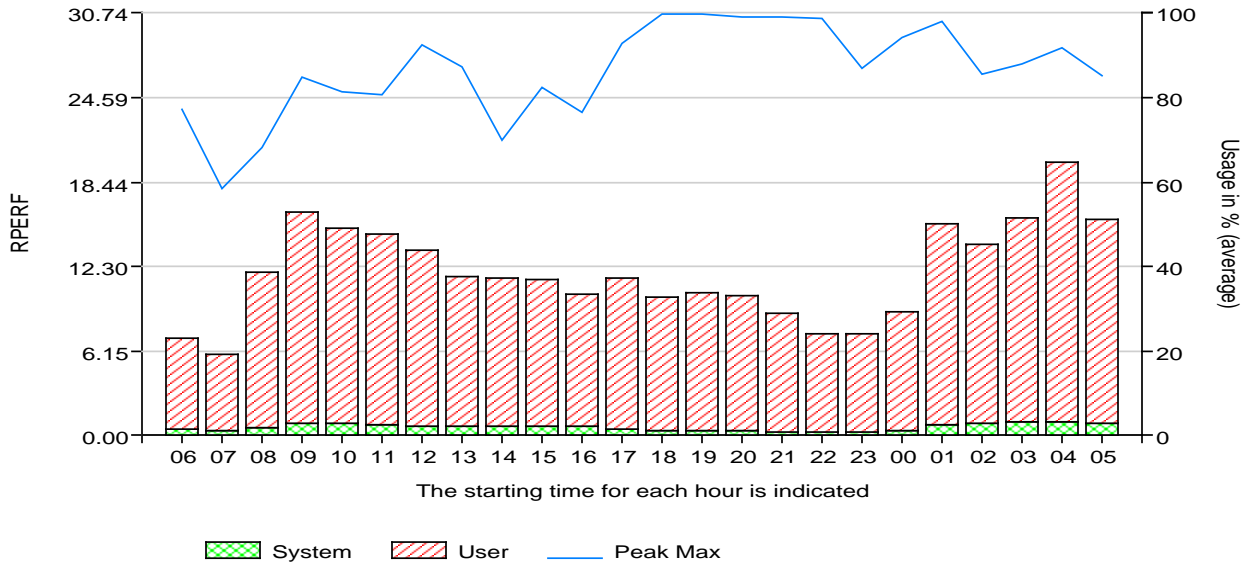
Month	User Jobs During The Period Containing	
	Processor time per I/O in seconds	Number of I/Os per second
January 11	0.03211	12
February 11	0.01240	39
March 11	0.00756	64

# Processor Utilization

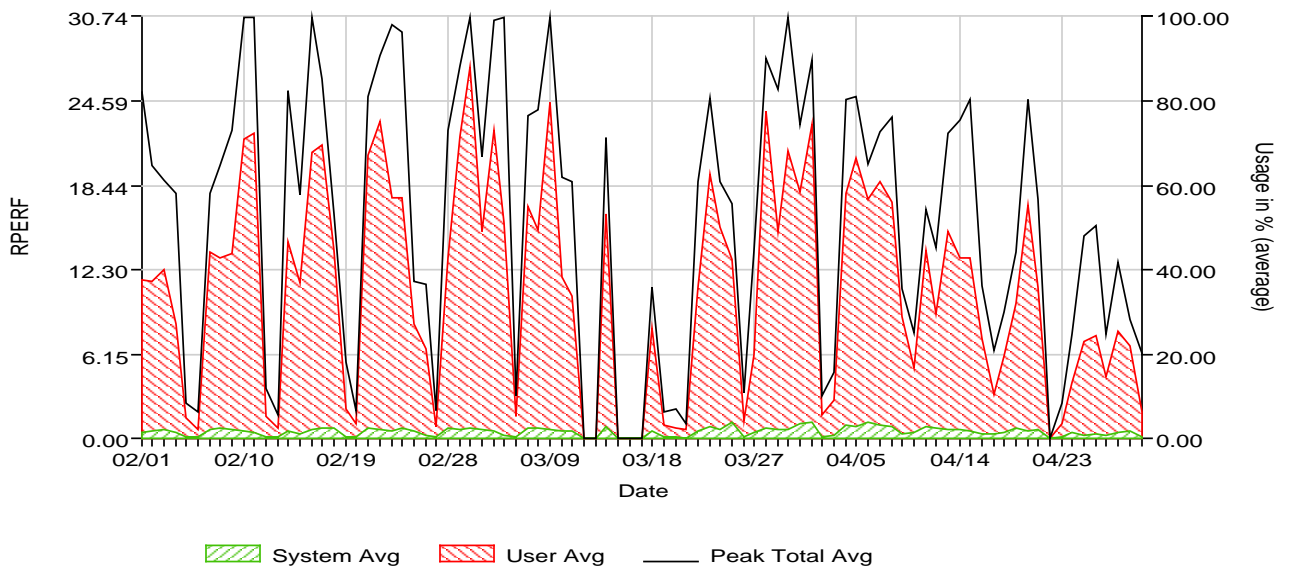
AIX-DEMO IBM  
 Month Ending April 2011  
 Shift 1 (08:00 - 17:30)

AIX-DEMO 5.3.0.0 (06VMSRG-0002)  
 Model 9119 595 Cores (CPU) 5.00  
 Disk Capacity 140 GB  
 Internal Memory 30719 MB

Processor Utilization, by the Hour



Average Processor Utilization in %, per Day



## Facts

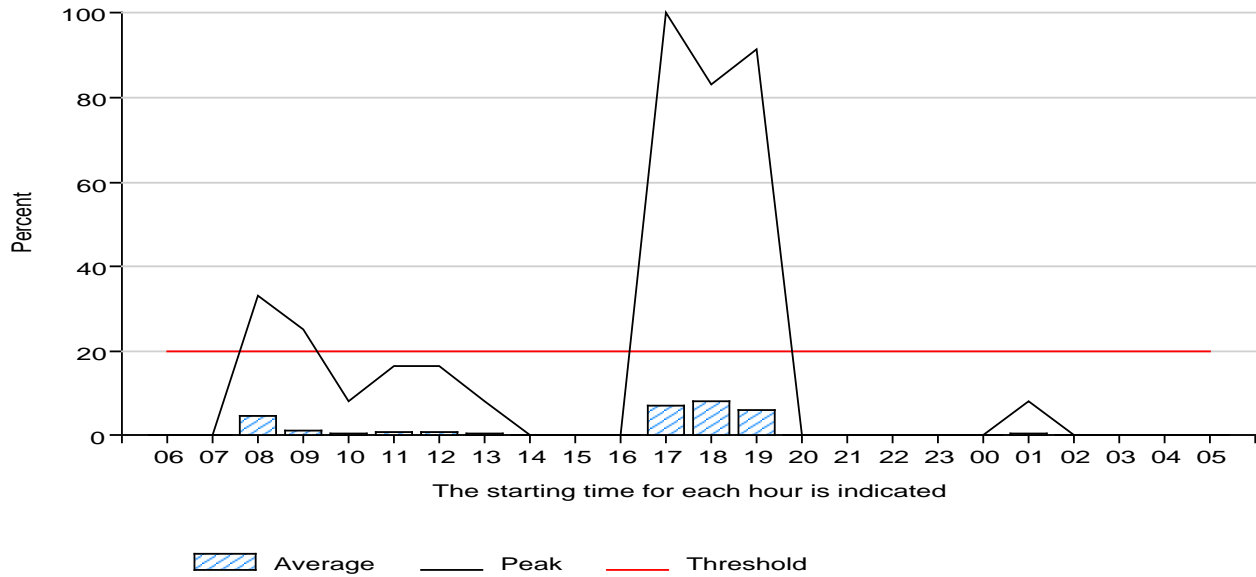
Recommended guideline in %, all priorities	Avg %	Marginal	Critical
	93		97

# RunQ Over Limit

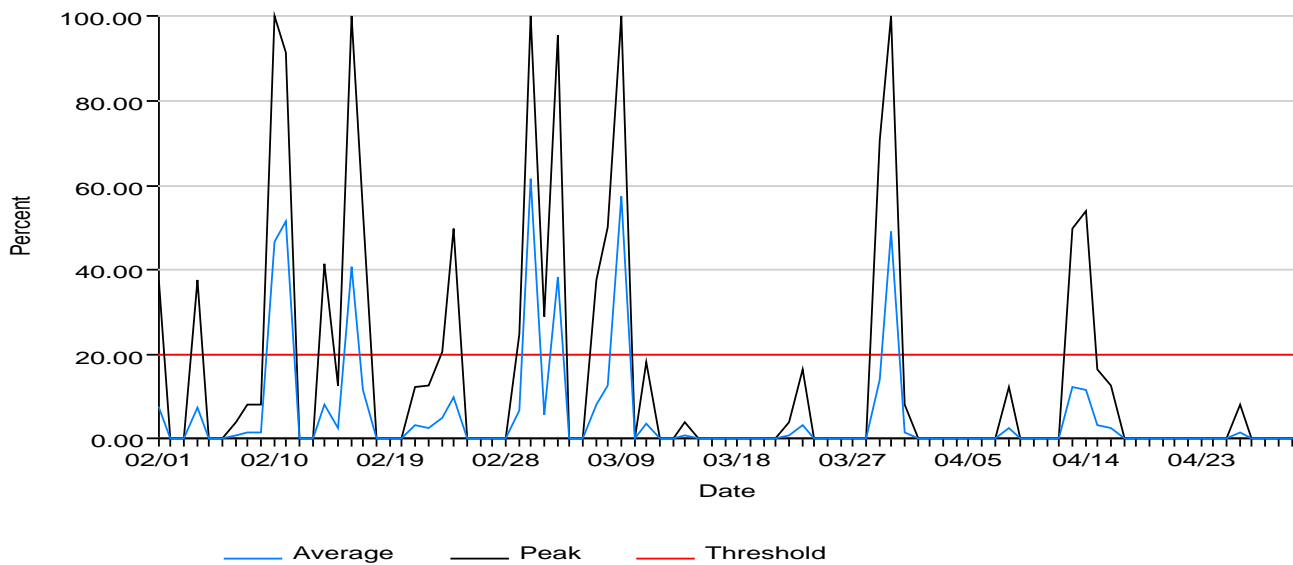
AIX-DEMO IBM  
Month Ending April 2011  
Shift 1 (08:00 - 17:30)

AIX-DEMO 5.3.0.0 (06VMSRG-0002)  
Model 9119 595 Cores (CPU) 5.00  
Disk Capacity 140 GB  
Internal Memory 30719 MB

### Percent of Time RunQ Over the Limit, per Hour



### Percent of Time RunQ Over the Limit, per Day

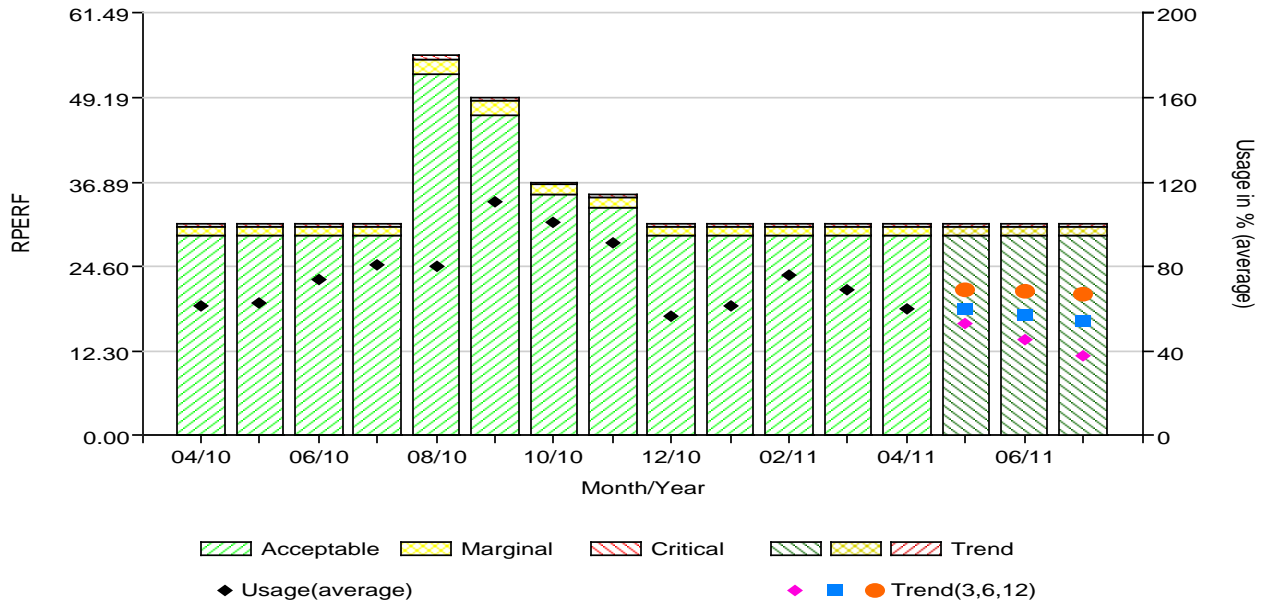


# Peak Processor Utilization - Trend

AIX-DEMO IBM  
 Month Ending April 2011  
 Shift 1 (08:00 - 17:30)

AIX-DEMO 5.3.0.0 (06VMSRG-0002)  
 Model 9119 595 Cores (CPU) 5.00  
 Disk Capacity 140 GB  
 Internal Memory 30719 MB

**Peak Processor Utilization, Total - with Trend Projections**  
 Monthly average of peak 2 hour utilization for the measured days



## Facts

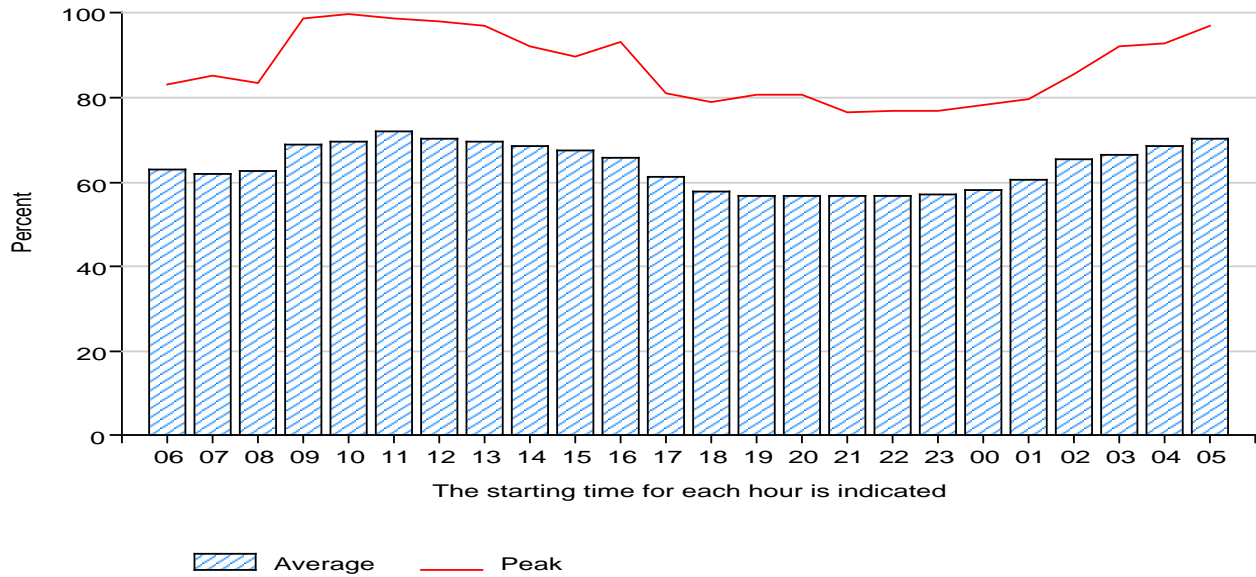
	Marginal	Peak	Critical
Recommended guideline in %, all priorities	95		99
Number of months until the guideline is reached, all priorities	12		12

# Memory Usage

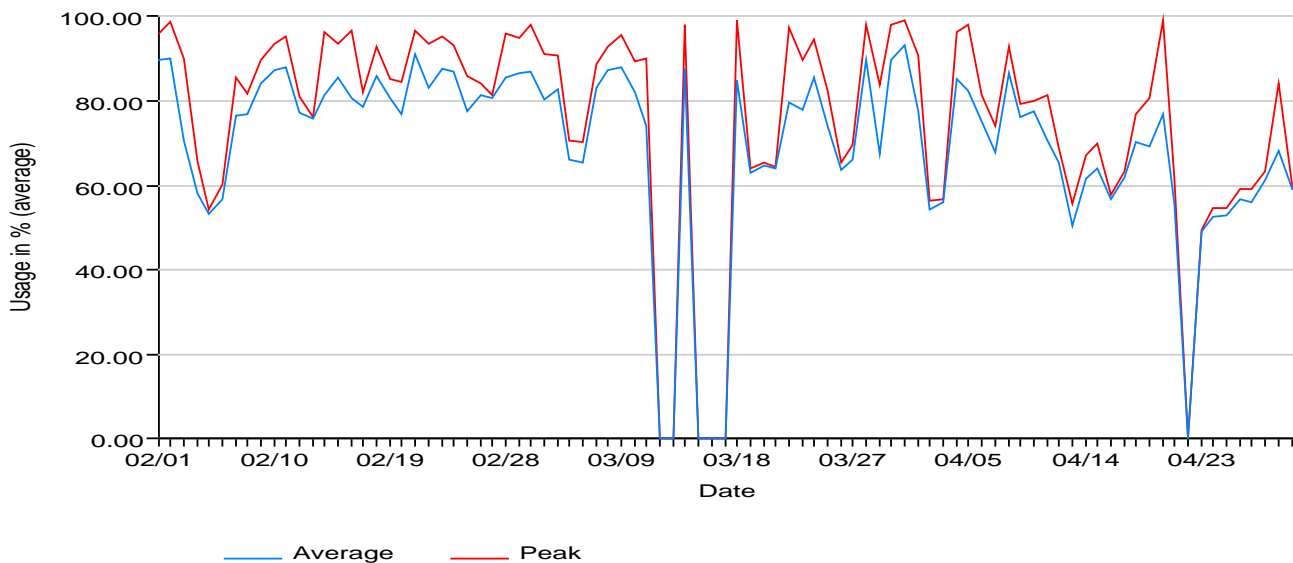
AIX-DEMO IBM  
Month Ending April 2011  
Shift 1 (08:00 - 17:30)

AIX-DEMO 5.3.0.0 (06VMSRG-0002)  
Model 9119 595 Cores (CPU) 5.00  
Disk Capacity 140 GB  
Internal Memory 30719 MB

### Memory Utilization, per Hour



### Memory Usage in %, per Day



## Facts

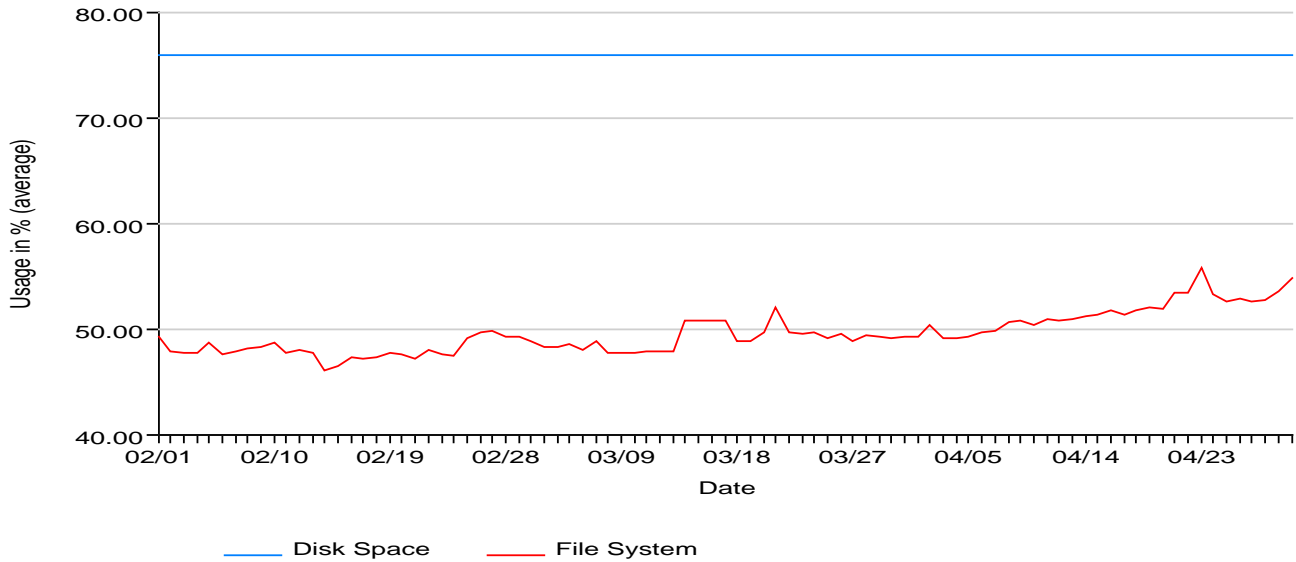
Scan Rate/Sec	0.03
Average Scanned/Freed Ratio	4.30

# Disk Space Usage

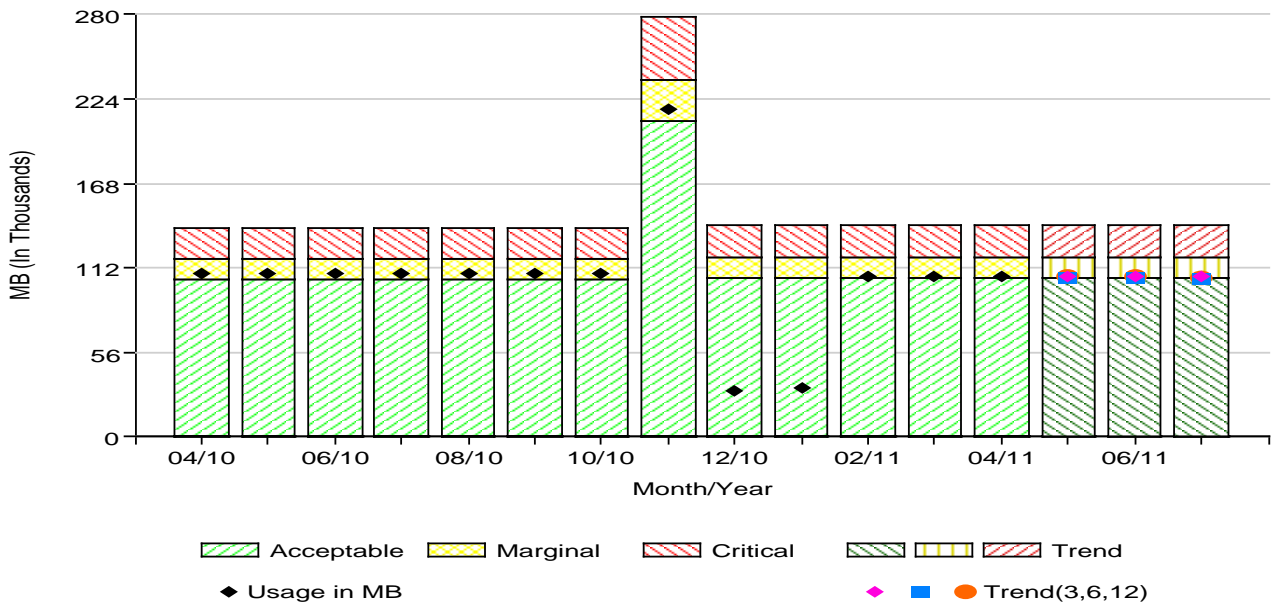
AIX-DEMO IBM  
 Month Ending April 2011  
 Shift 1 (08:00 - 17:30)

AIX-DEMO 5.3.0.0 (06VMSRG-0002)  
 Model 9119 595 Cores (CPU) 5.00  
 Disk Capacity 140 GB  
 Internal Memory 30719 MB

### Disk Space Usage in %, per Day



### Disk Space Usage in MB - with Trend Projections



## Facts

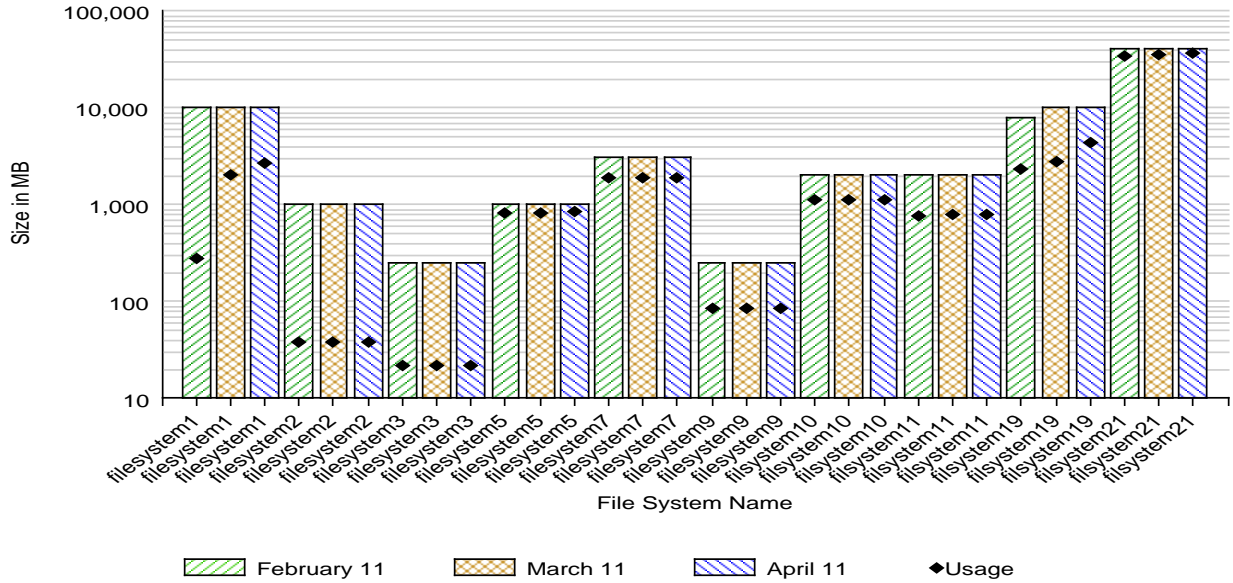
	Marginal	Critical	
Recommended guideline in %	75	85	
Number of months until the guideline is reached	0	12	
Change of stored data in % during the period			-1.77
Maximum usage of disk space in % during the period			77.83

# File System Usage

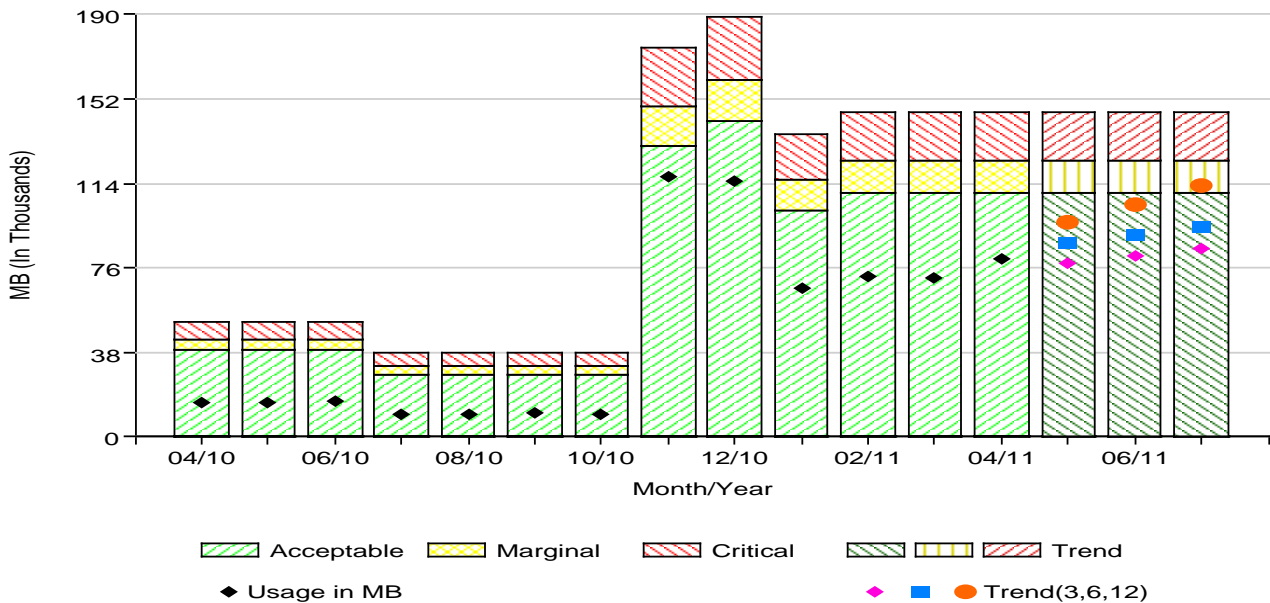
AIX-DEMO IBM  
 Month Ending April 2011  
 Shift 1 (08:00 - 17:30)

AIX-DEMO 5.3.0.0 (06VMSRG-0002)  
 Model 9119 595 Cores (CPU) 5.00  
 Disk Capacity 140 GB  
 Internal Memory 30719 MB

Top Ten Most Heavily Used File Systems  
 3 Month Period



File System Usage in MB - with Trend Projections



## Facts

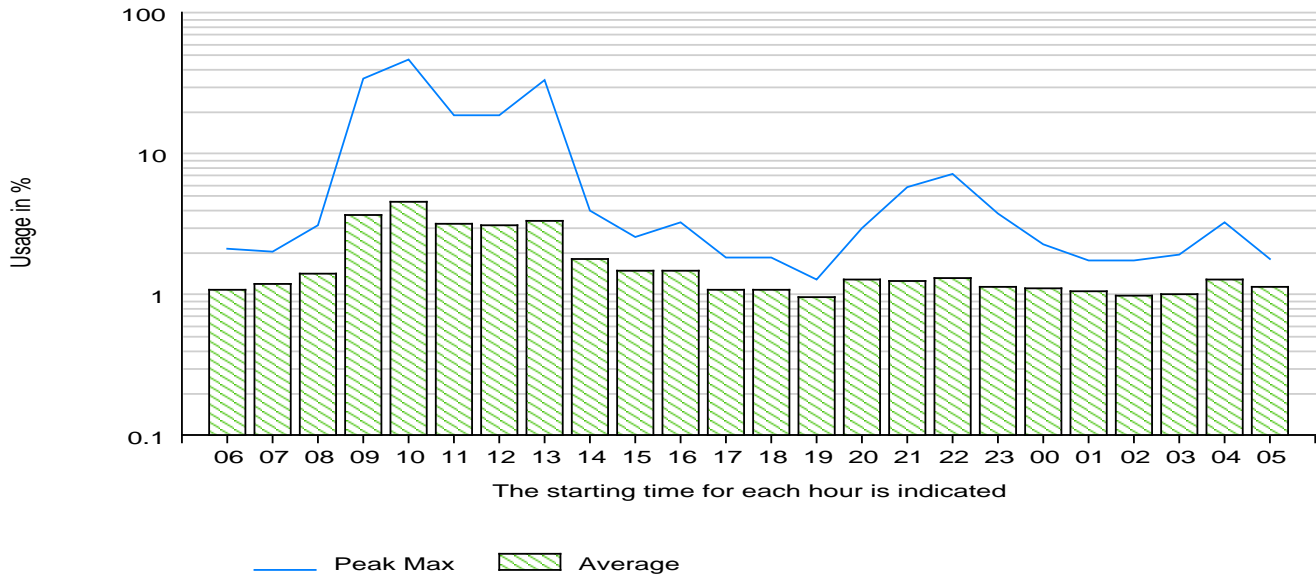
	Marginal	Critical
Recommended guideline in %	75	85
Number of months until the guideline is reached	0	12
Change Of File System In % During The Period		25.15
Maximum File System Usage In % During The Period		66.93

# Disk Arm Utilization

AIX-DEMO IBM  
 Month Ending April 2011  
 Shift 1 (08:00 - 17:30)

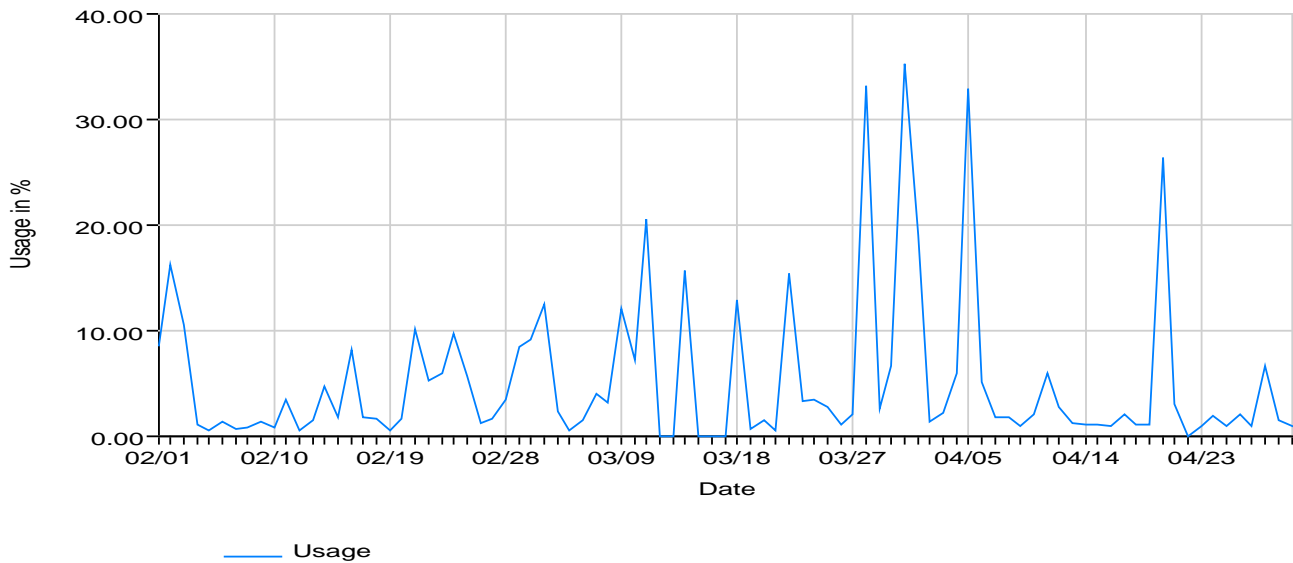
AIX-DEMO 5.3.0.0 (06VMSRG-0002)  
 Model 9119 595 Cores (CPU) 5.00  
 Disk Capacity 140 GB  
 Internal Memory 30719 MB

### Disk Arm Utilization, by Hour



### Peak Disk Arm Utilization in %, per Day

The two heaviest hours per measured day



## Facts

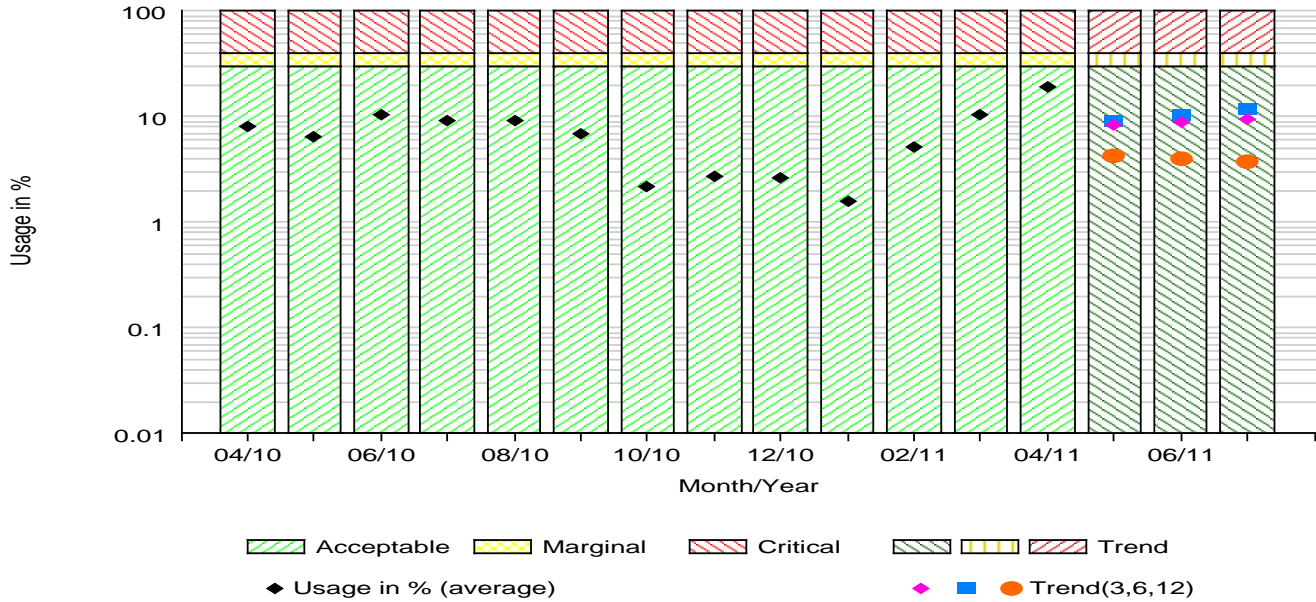
	Marginal	Peak	Critical
Recommended guideline in %	30		40
Number of months until the guideline is reached			12

# Disk Arm Utilization - Trend

AIX-DEMO IBM  
 Month Ending April 2011  
 Shift 1 (08:00 - 17:30)

AIX-DEMO 5.3.0.0 (06VMSRG-0002)  
 Model 9119 595 Cores (CPU) 5.00  
 Disk Capacity 140 GB  
 Internal Memory 30719 MB

## Peak Disk Arm Utilization in % - with Trend Projections



**Note for systems with SAN-based storage:** Each server/LPAR's graph for disk arms will reflect utilization of the portion of the SAN which is accessed by that server/LPAR. In rare cases, multiple servers using storage on the same SAN unit may result in a slight increase in displayed disk arm utilization

## Facts

	Marginal	Peak	Critical
Recommended guideline in %	30		40
Number of months until the guideline is reached			12

# AIX-DEMO IBM

## Technical Specifications for AIX-DEMO

Serial Number - LPAR	06VMSRG-0002
Operating System Version	5.3.0.0
Model	9119 595
Disk Capacity	140 GB
Internal Memory	30719 MB
Total Number of Cores(CPUs) Active in the system	64.00
Number of Cores(CPUs) assigned to this Partition/Server	5.00

## Period

Month Ending	April 2011
Business Days	M Tu W Th F
Shift	1 (08:00 - 17:30)

## Configuration change during the period

Model/Processor Feature	No
Internal Memory	Yes
Disk Capacity	No

## Data not received for

03/12 03/13 03/15 03/16 03/17 04/22

## Trending based on

13 Months

## System Resources Summary

		Utilization in %	Months to Guideline
Processor Total	Avg	41.75	12
	Peak	59.90	12
	Max	89.91	-
Disk Space	Avg	76.06	12
	Max	76.06	-
File System	Avg	54.87	10
	Max	54.87	-
Memory	Avg	67.71	0
	Peak	75.81	0
	Max	99.27	-