

# ***IBM® DB2® Web Query for System i™ V1R1M0 and V1R1M1 Install Instructions***

*(updated 08/21/2009)*

## ***Installation & Setup***

Review all instructions before starting the install of DB2 Web Query. Complete these steps in order, if possible. Throughout this document, an Info APAR will be referenced. There is one for each version of DB2 Web Query, currently R110 and R111. The sections numbers will be the same in each, but you need to match your version of DB2 Web Query to the Info APARs listed below.

For R110: See Info APAR II14318: [http://www-912.ibm.com/n\\_dir/nas4apar.nsf/c79815e083182fec862564c00079d117/19f34f5766e54eef8625732d003c677d?OpenDocument](http://www-912.ibm.com/n_dir/nas4apar.nsf/c79815e083182fec862564c00079d117/19f34f5766e54eef8625732d003c677d?OpenDocument)

For R111: See Info APAR II14375: [http://www-912.ibm.com/n\\_dir/nas4apar.nsf/c79815e083182fec862564c00079d117/51112c7d81d814d6862573f70041ec46?OpenDocument](http://www-912.ibm.com/n_dir/nas4apar.nsf/c79815e083182fec862564c00079d117/51112c7d81d814d6862573f70041ec46?OpenDocument)

To install, sign on as QSECOFR or a user with \*SECADM and \*ALLOBJ authority.

### **Install:**

1. Review the 5733QU2 prerequisite programs, options and PTFs listed in **Section 1** and **Section 2** of the matching **Info APAR** (links above) and verify that **all prerequisites are installed** for your version of IBM i.
2. RSTLICPGM LICPGM(5733QU2) DEV(OPT01) // Replace OPT01 with your optical drive.
3. Read and press F14 to accept the license agreement.
4. Load and apply the latest 5733QU2 PTFs listed in **Section 3A** and **Section 3B** of the matching **Info APAR** (links above).
5. The first time the product is installed, it creates a user profile QWEBQRYADM with no password supplied. Run CHGUSRPRF USRPRF(QWEBQRYADM) PASSWORD(<yourpwd>) to set the password for this profile.

### **Add the license keys using ADDLICKEY.**

#### **Named User Licensing** (each user needs to be pre-authorized):

1. For each user that will use the product, run: CALL QWEBQRY76/WQADDLIC 'USRPRF' where USRPRF is your user profile in upper case.
2. If you need to remove a user, run: CALL QWEBQRY76/WQRLSLIC 'USRPRF'  
Note that if you exceed the limit of purchased named users, the login function will be disabled. To remove people, use WQRLSLIC.
3. To display which users are currently registered, use:  
WRKLCINF PRDID(5733QU2), option 8 for feature 5050.

\* Security reminder: Your developer profiles need the MRADMIN group in it to create domains and reports. See the DB2 Web Query Product documentation for further details.

**Start Web Query:**

1. Sign in as QWEBQRYADM
2. Enter the STRWEBQRY command

**End Web Query:**

1. Sign in as QWEBQRYADM
2. Enter the ENDWEBQRY command

**If purchased - Install the Active Reports option**

- RSTLICPGM LICPGM(5733QU2) DEV(OPT01) OPTION(1)

**If purchased - Install the OLAP Enablement option**

- RSTLICPGM LICPGM(5733QU2) DEV(OPT01) OPTION(2)

**If purchased - Install the Developer Workbench option:**

1. RSTLICPGM LICPGM(5733QU2) DEV(OPT01) OPTION(3)
2. Load and apply the latest 5733QU2 PTFs for Developer Workbench listed in **Section 3C** of the matching **Info APAR** (links above).
3. Copy the install file from IFS to your PC. This can be done by FTPing the install file to the PC or mapping a drive from the PC to the IFS. The install file is located at:  
/qibm/proddata/webquery/ibi/DeveloperWorkBench/WfDevStudio766i.exe
4. Execute the Developer Workbench Install Program: WfDevStudio766i.exe

**If purchased – (V1R1M1 Only) Install the Run Time User Enablement option**

- RSTLICPGM LICPGM(5733QU2) DEV(OPT01) OPTION(4)
- For details on taking advantage of Run Time User Enablement, please see:  
[http://www-03.ibm.com/systems/i/software/db2/pdf/DB2\\_Web\\_Query\\_Run\\_Time\\_User\\_Enablement.pdf](http://www-03.ibm.com/systems/i/software/db2/pdf/DB2_Web_Query_Run_Time_User_Enablement.pdf)

**If purchased – (V1R1M1 Only) Install the Spreadsheet Client option**

- RSTLICPGM LICPGM(5733QU2) DEV(OPT01) OPTION(5)

**If purchased – (V1R1M1 Only) Install the Adapter for Microsoft® SQL Server® option**

- RSTLICPGM LICPGM(5733QU2) DEV(OPT01) OPTION(6)

***Remember to watch Section 3 of the Info APARs for the latest PTFs for the DB2 Web Query Product!***

## APPENDIX A: NLS Configuration

Follow the instructions in this appendix if you wish to configure Web Query for any of the following:

- Language other than English
- NLS settings such as
  1. Setting the default currency symbol
  2. Setting the default numeric formatting

The user interface currently supports the following languages:

Arabic-2954  
Brazilian-Portuguese-2980  
Chinese-Simplified-2989  
Chinese-Traditional-2987  
Croatian-2912  
Czech-2975  
Danish-2926  
Dutch-2923  
Dutch-Belgium-2963  
English-2924  
English DBCS-2984  
English Uppercase DBCS-2938  
Finnish-2925  
French-2928  
French-Belgium-2966  
French-MNCS-2940  
French Canadian-2981  
German-2929  
German-MNCS-2939  
Hebrew-2961  
Hungarian-2976  
Italian-2932  
Italian-MNCS-2942  
Japanese-Upper/Lower-2930  
Japanese-DBCS-2962  
Korean-2986  
Norwegian-2933  
Polish-2978  
Portuguese-2922  
Portuguese-MNCS-2996  
Romanian-2992  
Russian-2979  
Slovakian-2994  
Spanish-2931  
Swedish-2937  
Turkish-2956

For those customers using CCSID 37, the following steps are not required.

## ***Post installation steps for NLS configuration***

Before following these steps, please apply the latest DB2 Web Query PTFs as found in Info APAR II14318

<http://www->

[912.ibm.com/n\\_dir/nas4apar.nsf/c79815e083182fec862564c00079d117/19f34f5766e54eef8625732d003c677d?OpenDocument&Highlight=2,II14318](http://www-912.ibm.com/n_dir/nas4apar.nsf/c79815e083182fec862564c00079d117/19f34f5766e54eef8625732d003c677d?OpenDocument&Highlight=2,II14318)

- **Step 1:**

Run the tsgult (**Translation Services Generation Utility Light**) utility from a qsh command prompt, to set the server code page and language. The server code page should relate to the majority of your data to reduce data conversion. For more information on choosing the correct server code page, see Appendix B.

### **Utility Syntax:**

```
tsgult NLSCFG edaconf [codepage] [langid]
```

### **Parameters:**

**NLSCFG** - A literal keyword.

**edaconf** - EDACONF location. (i.e. /qibm/userdata/webquery/ibi/srv76/wfs)

**codepage** - codepage or ccsid to be NLS-configured. When 37 is specified, nlscfg.err will be removed. If this is omitted, the current job ccsid is used.

**langid** - 3-letter IBM language ID. This should be specified only when codepage is to be used for multiple languages and not unique to a single language.

### **Example 1.**

```
/qibm/proddata/webquery/ibi/srv76/home/bin/tsgult.out NLSCFG  
/qibm/userdata/webquery/ibi/srv76/wfs
```

NLS is setup based on the current job ccsid.

### **Example 2.**

```
/qibm/proddata/webquery/ibi/srv76/home/bin/tsgult.out NLSCFG  
/qibm/userdata/webquery/ibi/srv76/wfs 939
```

Japanese codepage 939 is setup.

### **Example 3.**

```
/qibm/proddata/webquery/ibi/srv76/home/bin/tsgult.out NLSCFG  
/qibm/userdata/webquery/ibi/srv76/wfs 37
```

37 is English codepage and this command will remove the nlscfg.err file

**Example 4.**

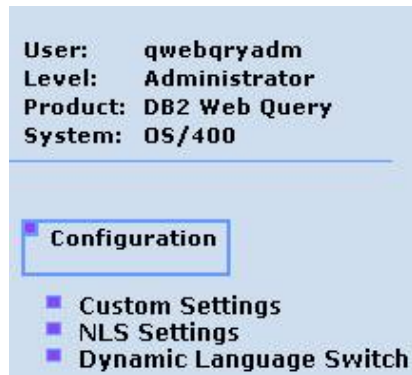
```
/qibm/proddata/webquery/ibi/srv76/home/bin/tsgult.out NLSCFG  
/qibm/userdata/webquery/ibi/srv76/wfs FRA
```

French codepage 297 is setup.

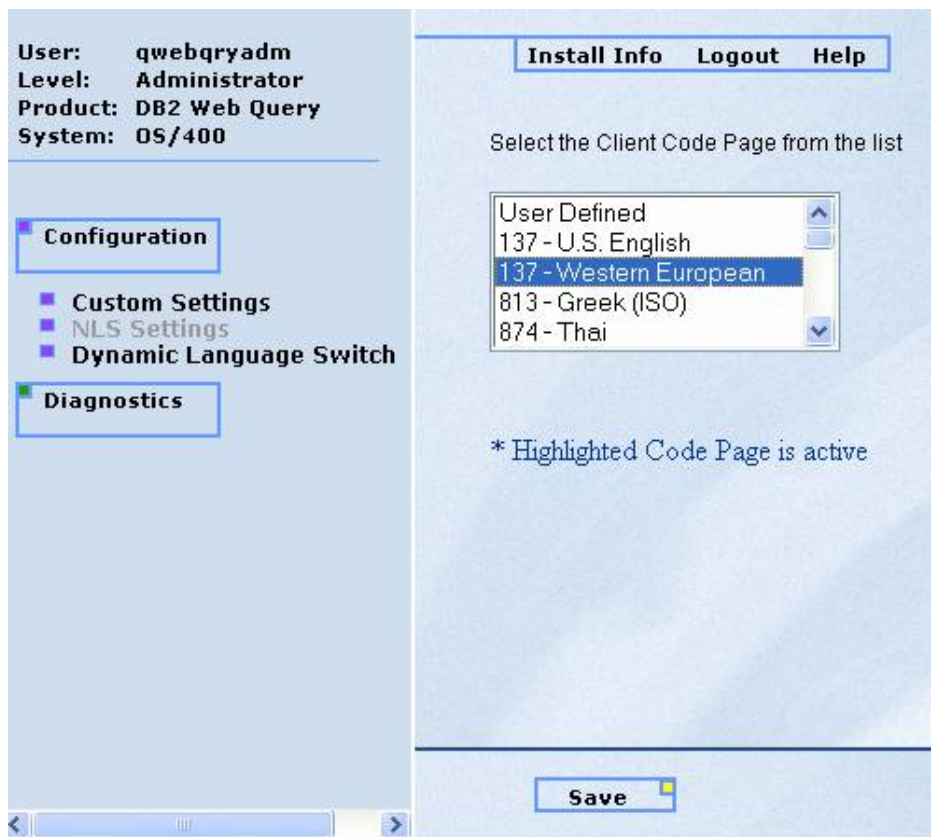
## Step 2:

Login to the DB2 Web Query console with the **QWEBQRYADM** user id, this is necessary so that the NLS configuration options are displayed.

Use URL [http://sysname:11331/webquery\\_html/wfconsole.htm](http://sysname:11331/webquery_html/wfconsole.htm) and click on the Configuration Section:



Click on NLS Settings, and select the client code page to be used. See Appendix B for more information on choosing the client code page.



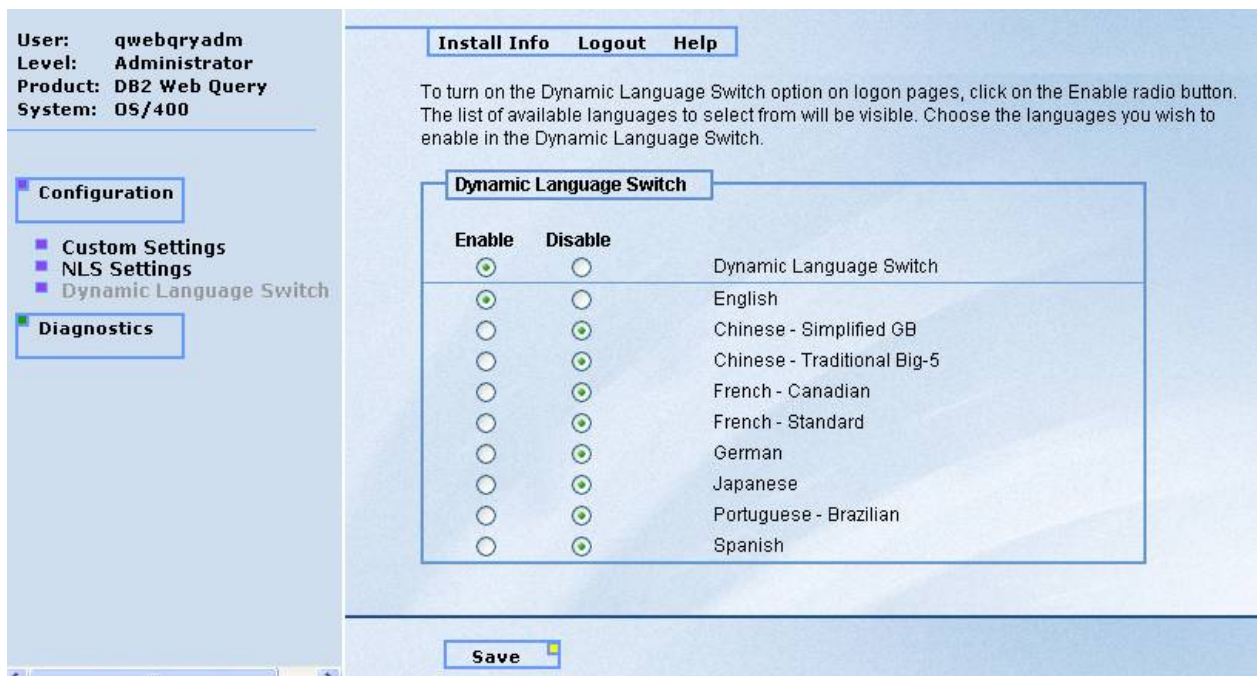
Click on Save to apply the change to the configuration.

- Step 3 Enable the languages for the drop-down list

Click on Dynamic Language Switch, this will enable the drop down language list in the logon page. You can also enable the particular languages that will appear on the drop down list, which will be used for the DB2 Web Query User tools and GUI.

On the Dynamic Language Switch window, the languages shipped with DB2 Web Query are displayed. By default, the Dynamic Language Switch and the language option buttons are disabled. Select the *Enable* option button to enable the Dynamic Language Switch. Enabling this switch activates the Enable option buttons for all languages and turns on the Select Language button on all logon pages. The default language (English) is automatically enabled. Select the *Enable* option button for additional languages you want to appear in the Select Language drop-down list on logon pages.

***Once you select a language, only those that share the same character encoding will be available to be enabled. For example, Asian languages may only be enabled with English. European languages may be enabled with each other and English.***



- Click on **Save** to apply the changes to the configuration.

- **Step 4 Set the default numeric formatting**

If you wish to change the default, click on Custom Settings. By setting the value for CDN, you can adjust the default behavior for numeric data.

**SET CDN= [ ON | OFF | SPACE | QUOTE | QUOTEP ]**

**ON** enables CDN. For example, the number 3,045,000.76 is represented as 3.045.000,76.

**OFF** disables CDN. For example, the number 3,045,000.76 is represented as 3,045,000.76. OFF is the default value.

**SPACE** separates groups of three significant digits with a space instead of a comma, and marks a decimal position with a comma instead of a period. For example, the number 3,045,000.76 is represented as 3 045 000,76.

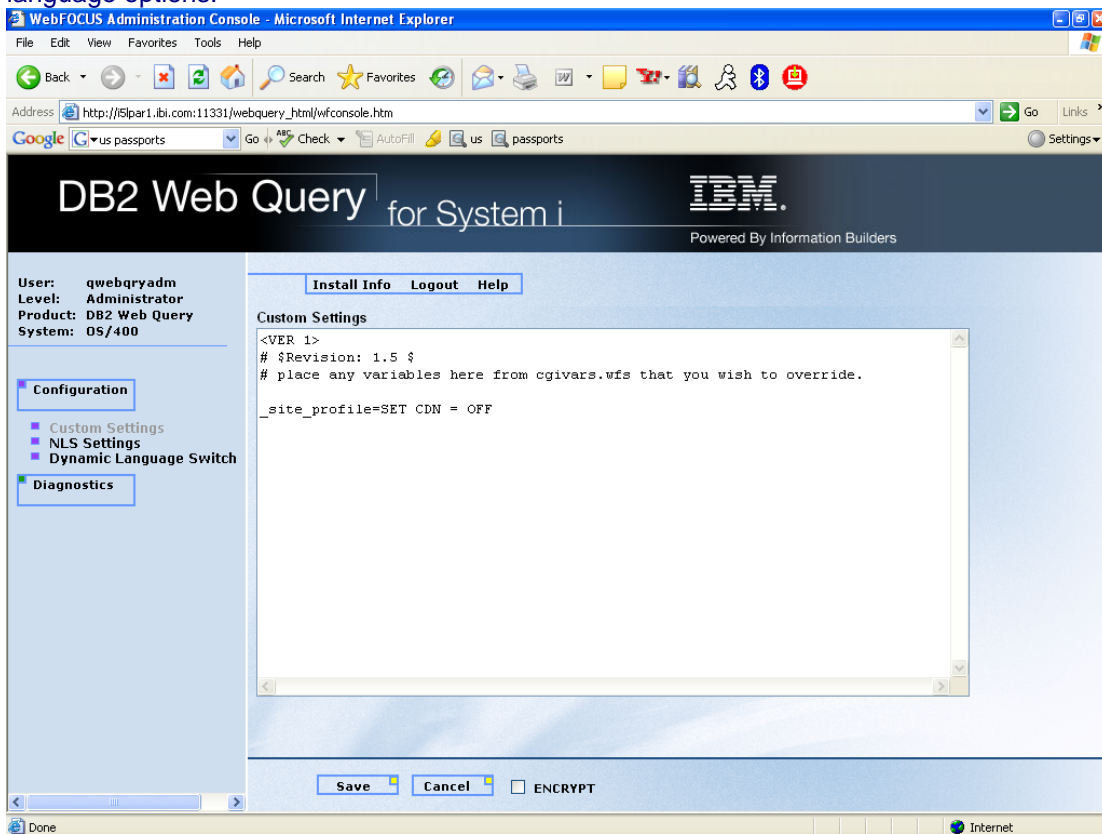
**QUOTE** separates groups of three significant digits with a single quotation mark instead of a comma, and marks a decimal position with a comma instead of a period. For example, the number 3,045,000.76 is represented as 3'045'000,76.

**QUOTEP** separates groups of three significant digits with a single quotation mark instead of a comma, and marks a decimal position with a comma. For example, the number 3,045,000.76 is represented as 3'045'000.76.

Example syntax:

`_site_profile=SET CDN = OFF`

Note that if the display format of a Web Query report is Excel 2000 or later, Continental Decimal Notation is controlled by the settings on an end user's computer. That is, numbers in report output are formatted according to the convention of the locale (location) set in regional or browser language options.



- **Step 5 Set the default currency**

If you wish to change the default currency, please edit the file [/qibm/userdata/webquery/ibi/srv76/wfs/etc/nlscfg.err](#) (it was created by running tsgult in Step 1). Add the symbol that you wish for currency in this file.

For example, to specify the Euro:

CURRENCY = €

## APPENDIX B: Code page mapping table

The table below contains a mapping from what code page the system is typically running in (IBM i code page) to the Reporting Server codepage (used by the tsgult utility in Step 1 above) to the Client Codepage used in Step 2 above.

IBM i code page	Reporting Server codepage (tsgult)	Client Codepage		
1140 or 037	37	137	1252	923
1141 or 273	273	137	1252	923
1142 or 277	277	137	1252	923
1143 or 278	278	137	1252	923
1144 or 280	280	137	1252	923
1145 or 284	284	137	1252	923
1146 or 285	285	137	1252	
1147 or 297	297	137	1252	923
420	420	1089	1256	
424	424	916	1255	
1148 or 500	500	137	1252	923
838	838	874		
870	870	912	1250	
875	875	1253	813	
933	933	949		
935	935	946		
937	937	10948		
1025	1025	915	1251	
1026	1026	920	1254	
1047	1047	137	1252	923
1112	1112	1257	921	
930	930	942		
939	939	942		

Some notes about this table:

- The IBM i Code page value is typically what is found when running DSPSYSVAL QCHRID
- When using (for example) 1141 on IBM i, you will still pass 273 into the tsgult utility and it will then recognize the Euro symbol
- When more than one Client Code page is listed, the first one is preferred, but the others will work in many circumstances (depending on data)