

# Business Continuity Management Milano – 8 Settembre 2009

**Business Continuity per le moderne  
infrastrutture IT.** Soluzioni semplici per ambienti  
complessi

Fiorenzo Toffoli  
Vision Solutions Dir. Sud Europa

## A chi affidare un progetto BC



### IBM Premier HA Business Partner

- 90% della base installata delle soluzioni HA su System i
- 400+ business partners worldwide
- Maggiori investimenti in R&D
- Miglior supporto globale

6.000+ clienti 22,000+ licenze

400+ dipendenti

Più dell'80% delle vendite HW IBM associate con progetti di HA

### Vision in Italia

12+ anni di esperienza

250+ clienti

Laboratorio interno

Centro di supporto certificato per Italia



### Dr. Frank Soltis, IBM System i Founder, Joins Vision Solutions Technology Advisory Board

Posted by Kevin Jenkins in People, Software, Tech News on 02 10th, 2009 | no responses

Email This Post



LATEST NEWS WHO ON VERGE OF DECLARING H1N1 FLU PANDEMIC



Top News  
Reuters top ten news stories delivered to your inbox each day.  
Subscribe

3rd Generation prius with a 50 mpg rating.  
Options shown. \*2010 EPA 51/48/50 city/highway/combined mpg estimates. Actual mileage will vary.

You are here: Home > News > Article

## Vision Solutions Names Dr. Frank Soltis to Advisory Board

Tue Feb 10, 2009 8:01am EST



Newsletters Subscriptions Forums Safari Store Career Media Kit

### THE FOUR HUNDRED iSeries and AS/400 Insight

Volume

### Soltis Tapped for Vision Solutions Advisory Group and Road Shows

Published: February 16, 2009

A woman with curly hair, wearing a white shirt, is sitting at a desk and celebrating with her arms raised, holding a white cloth. In the background, a man with glasses is sitting at a desk, working on a laptop. The scene is set in a modern office with large windows and a red wall. The text is overlaid on the image in a bold, blue, sans-serif font.

**HIGH AVAILABILITY**  
**DISASTER RECOVERY**  
**BUSINESS CONTINUITY**

Leaders have Vision ... *Vision is leader*

# A CHI SERVE LA BUSINESS CONTINUITY

ALLE AZIENDE CHE NON **SI POSSONO** MAI FERMARE

- distributori di materiali vari
- ospedali
- produzione a ciclo continuo
- materiali deperibili
- super e ipermercati
- trasportatori
- automotive

ALLE AZIENDE CHE NON **SI VOGLIONO** MAI FERMARE

**ONLINE ORDERING IS TEMPORARILY UNAVAILABLE****Come Back**  
IN A FEW MINUTES

Thanks for stopping by. Please [check back](#) soon. We apologize for the inconvenience. You can use the links below to learn about in-store specials and more.

**Store Locator**

Shop at a store near you! Get store hours and driving directions to Best Buy locations in your area.

ZIP / Postal Code

**Weekly Ad**

Find great values, name brands and special services at your local Best Buy store.

[Check it out.](#)

[More Help Topics & Offers](#)[Help FAQs](#)

Enter Artist, Team, or Venue



**Rolling Stones**  
[MGM Grand Hotel](#), Las Vegas, NV

**MGM GRAND**  
GARDEN ARENA

**Look For Rolling Stones Tickets**

The ticketing system is unavailable due to routine maintenance .

- Please check back later to purchase tickets .

**Become a Ticketmaster Member - Its Free !**

- Register your billing information and zip through checkout the next time you purchase tickets .
- Get the latest information on your favorite artist or team .

Join today !

**Event Details**

- [Seating Chart](#)
- [Directions](#)
- [Parking](#)

[Email this Event to a Friend](#)

US \$131.25 - US \$472.50

**Internet Onsale Info**  
Onsale to General Public :

AMERIQUEST PRESENTS



## Un esempio concreto di costi del down time

**Fatturato** → **circa € 12.500,00 al gg**

(Ipotizzando 25 milioni di Euro per 200 giorni lavorativi con una perdita del 10%)

**Dipendenti** → **circa € 8.000,00 al gg**

(Ipotizzando 50 dipendenti ed un costo dipendente € 156,00 al giorno - costo dipendente pari ad € 2.400 per 13 mensilità su circa 200 gg lavorativi - ed ipotizzando un reimpiego del personale in altre funzioni pari al 50%)

**Ripristino** → **circa € 500,00 al gg**

(Ipotizzando un intervento di un sistemista al costo di € 50 all'ora + le spese)

**TOTALE PER 2 GG DI FERMO → € 42.000,00**

**Straordinari** → **circa ..... al gg**

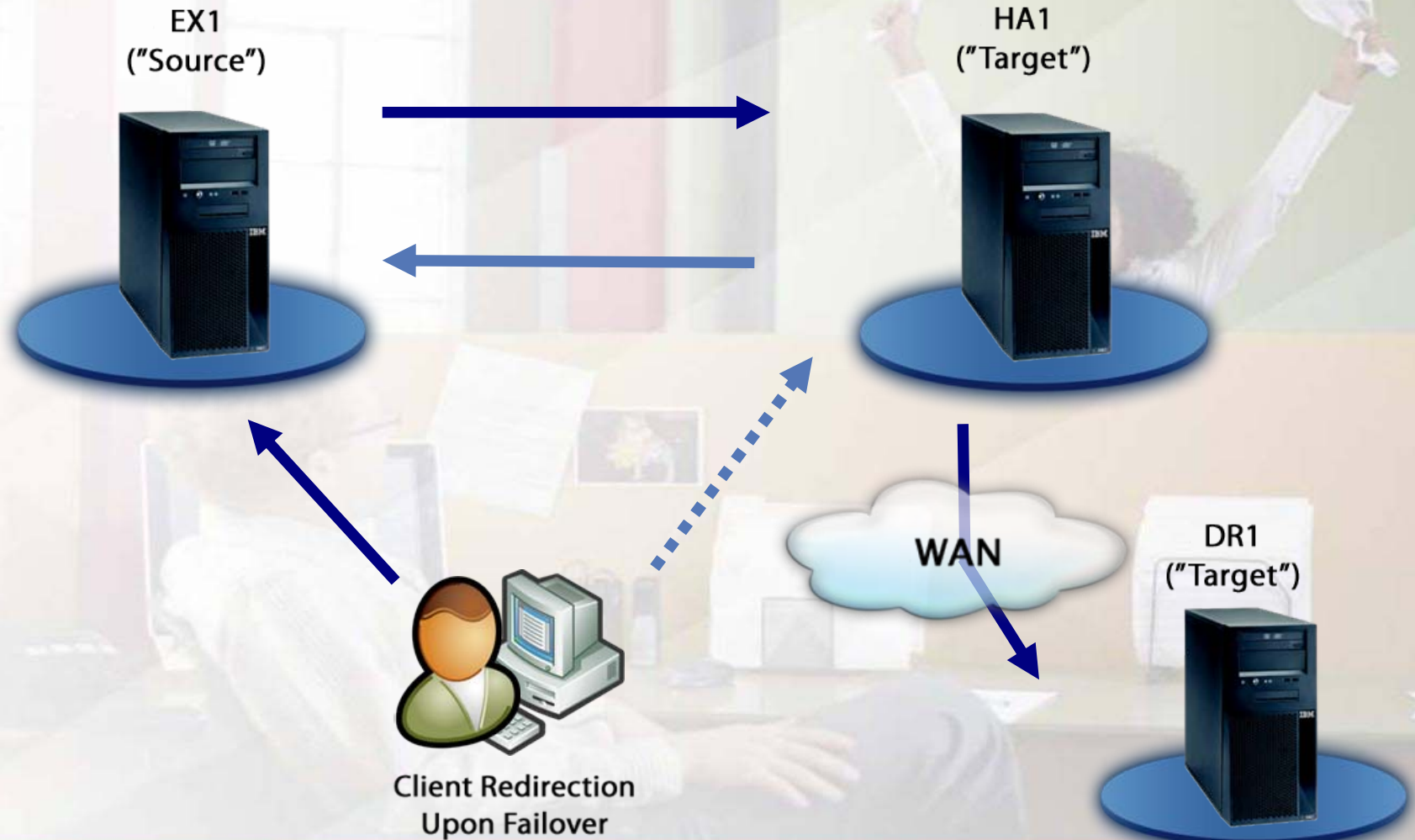
(Tempo dedicato per recuperare il lavoro fatto a mano)

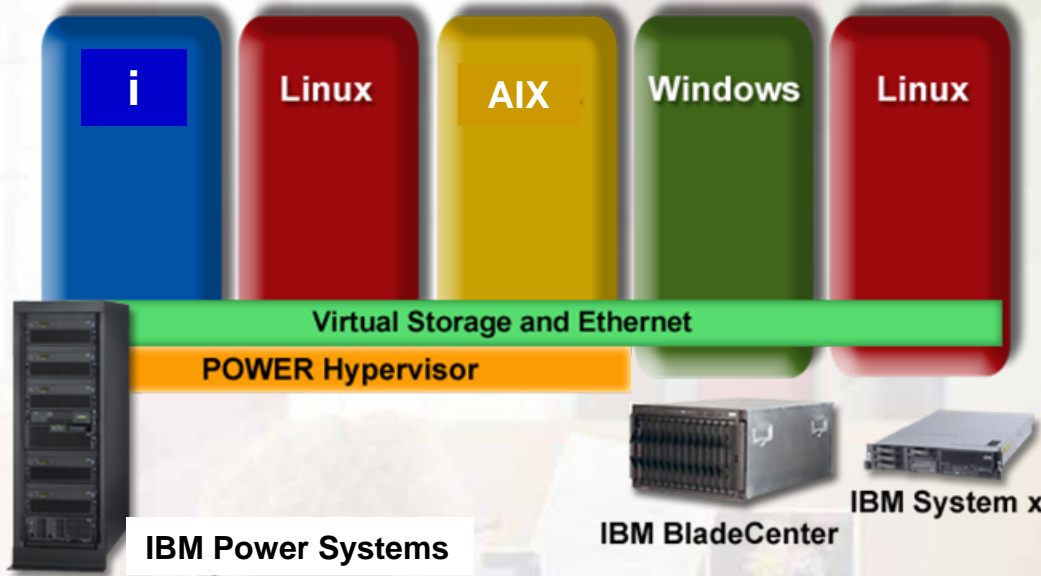
**Danno Immagine** → **circa ..... al gg**

**Perdita Liv. Serviz.** → **circa ..... al gg**

**ecc. ecc. ecc.** → **circa ..... al gg**

# Configurazione base di una soluzione HA/DR

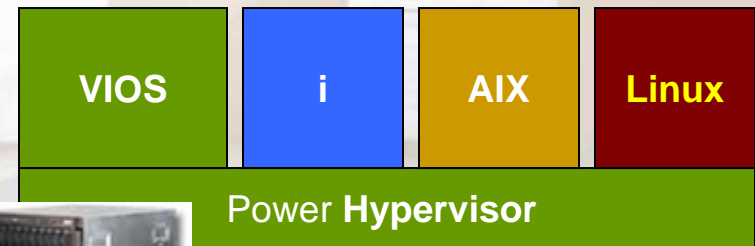




IDC predicts that the market for virtualization software will grow to US \$3.4 billion by 2011.

“The driving force for virtualization is consolidation, but **disaster recovery** is the second phase.”

*Gartner Analyst Tom Bittman*



*Maintaining Availability with Virtualization Technologies*



- **High Availability and Data Recovery**

- iTERA HA™
- ORION Solutions™
- MIMIX HA
- RecoverNow
- EchoStream for AIX
- HA Cluster for AIX e Linux
- Double Take for Windows
- Vision Cluster1™

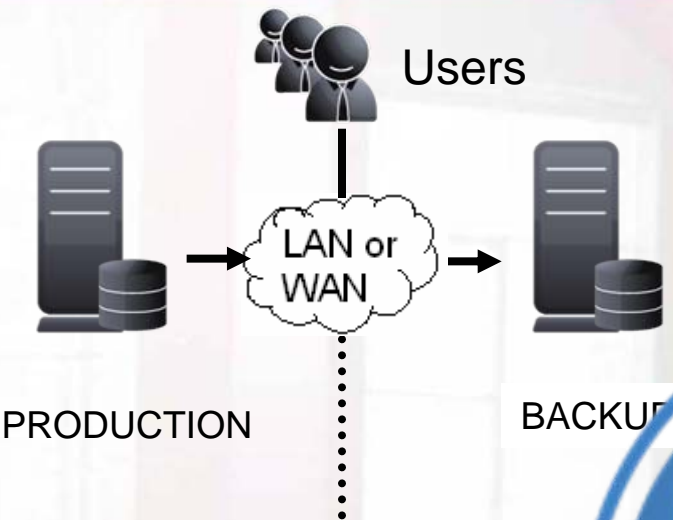
- **Continuous Application Availability**

- Convert While Active™
- Reorganize While Active™
- Upgrade / Migrate While Active™

- **Systems & Data Management**

- Vision Data Manager™
- Vision Director™
- Vision Replicate1™
- Vision Integrator™





• **Technical Benefits**

- Application aware mirroring
- Leverages complimentary IBM technologies
- Support for local & remote journaling
- Normal, target side save, recovery & re-sync modes
- Automated role-swap
- Backup database verification & repair
- Scalability for multi-processor environments
- Consolidated IBM i dashboard
- LPAR & clustering implementations
- Risk & enterprise iASP implementations
- Broadcast mode implementations
- IBM i V5R3 and V5R4, and i 6.1



The screenshot shows the Solutions Navigator interface with a table of system configurations. The table has columns for various system parameters and their values.

System	Model	OS	Version	License	Serial	IP	Port	Device	Mount	Mount Path	Mount Type	Mount Status
V5441	5441-01	OS/400	V5R4	...	...	...	...	...	...	...	...	...
V5442	5442-01	OS/400	V5R4	...	...	...	...	...	...	...	...	...
V5443	5443-01	OS/400	V5R4	...	...	...	...	...	...	...	...	...
V5444	5444-01	OS/400	V5R4	...	...	...	...	...	...	...	...	...
V5445	5445-01	OS/400	V5R4	...	...	...	...	...	...	...	...	...
V5446	5446-01	OS/400	V5R4	...	...	...	...	...	...	...	...	...
V5447	5447-01	OS/400	V5R4	...	...	...	...	...	...	...	...	...
V5448	5448-01	OS/400	V5R4	...	...	...	...	...	...	...	...	...
V5449	5449-01	OS/400	V5R4	...	...	...	...	...	...	...	...	...
V5450	5450-01	OS/400	V5R4	...	...	...	...	...	...	...	...	...

**Solutions Navigator:**  
Consolidated IBM i Dashboard  
& Management Console

- High availability
- Disaster recovery in minutes
- 'any distance' disaster recovery
- System available for query & reporting
- High quality leading data synchronization assurance
- Supports all major IBM i business applications
- Local Vision certified implementation & support
- Robust software upgrade procedures



**"16 years experience ... proven at over 5,000 companies world-wide"**



## Technical Benefits

- Sviluppato nativamente sul Remote Journaling
- CACH (concurrent audit concurrent heal )
- E2KG (controllo e correzioni automatiche)
- Replica completa per Dati ed Oggetti
- Apply accelerator (configurabile dall'utente)
- Fail-over automatico & virtual role-swap/rollover
- IBM clustering support \*
- iASP support \*
- MQ/WebSphere support \*
- Cluster host monitor (monitor per sistemi/LPAR multipli) \*

\* Option

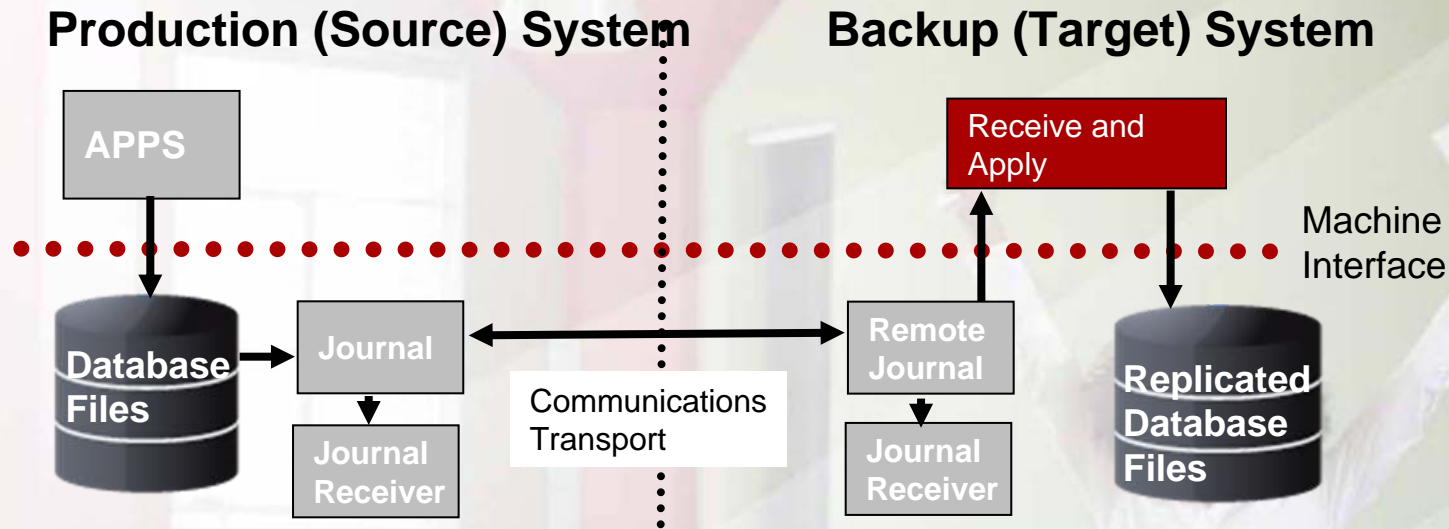


*L'utilizzo di funzioni "autonomiche" significa minor tempi per la gestione*

## Business Benefits

- Facile da installare
- Facile da controllare e gestire
- Facile da mantenere
- Centri di supporto globali
- Implementazione remota
- Costi di acquisto e gestione ridotti
- Più flessibile della replica HW
- Altamente scalabile
- Altamente affidabile





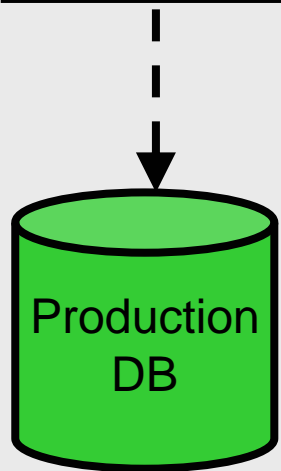
- Non necessita di aree di staging
- Meno lavori attivi sopra la MI
- Meno operazioni di I/O per transazione
- I dati transitano meno attraverso MI
- Più facile da installare
- Più facile da controllare e gestire
- Più affidabile(meno parti in movimento)
- Trasferimento dati al backup più veloce
- Minor spazio disco richiesto
- Minor utilizzo della CPU

- ✓ Offers a reliable and fast method to transfer journal receiver data
- ✓ It is ideal for use in data replication or high availability environments
- ✓ Provides a much more efficient transport of journal entries than the traditional approach

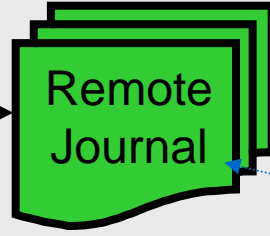
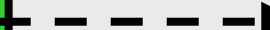
**AS/400 Remote Journal Function  
for High Availability and Data Replication**  
SG24-5189-00 <http://www.redbooks.ibm.com>

## Sistema di Produzione (Source)

Business Applications



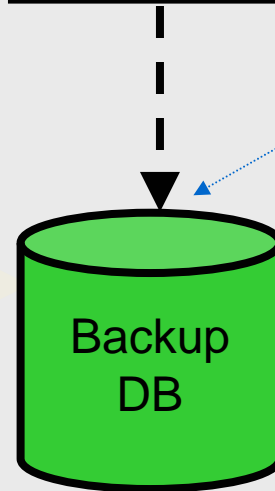
*Vision Auto Guard heals backup database*



## Sistema di Backup (Target)

*Gli utenti provano le applicazioni*

Business Applications



*L'applicazione delle repliche iTera è sospesa*

*I dati sono applicati in real time al sistema di backup*

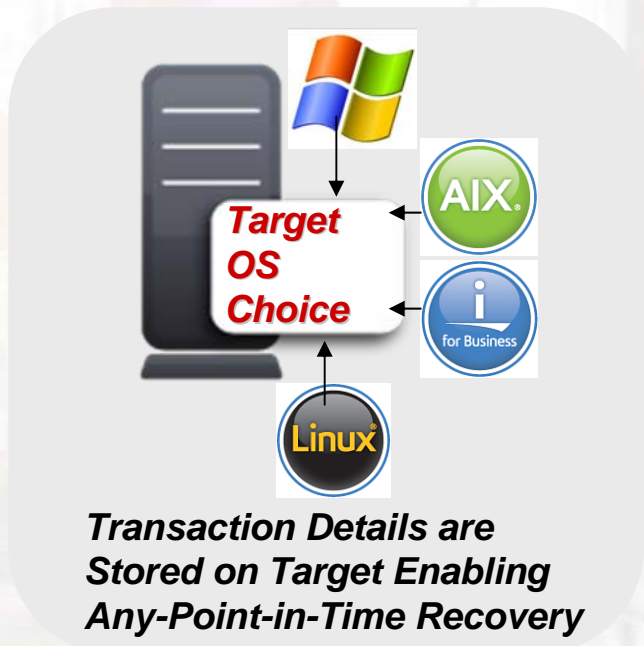
*I dati sono inviati al sistema di backup ma non applicati*



4 Dopo che il database di backup è stato "sanato", grazie alle funzionalità di ZZ Audit, viene ripresa la normale replica. Durante il test di role swap virtuale non si sono verificati down-time o rischi per i dati di produzione. Normalmente gli utenti eseguono i role swap virtuali durante le normali ore lavorative.

funzionalità ZZ Audit, senza downtime e molto più velocemente che con un tradizionale riavvicinamento dell'intero database.

# RECOVERNOW™



**Transaction Details are  
Stored on Target Enabling  
Any-Point-in-Time Recovery**



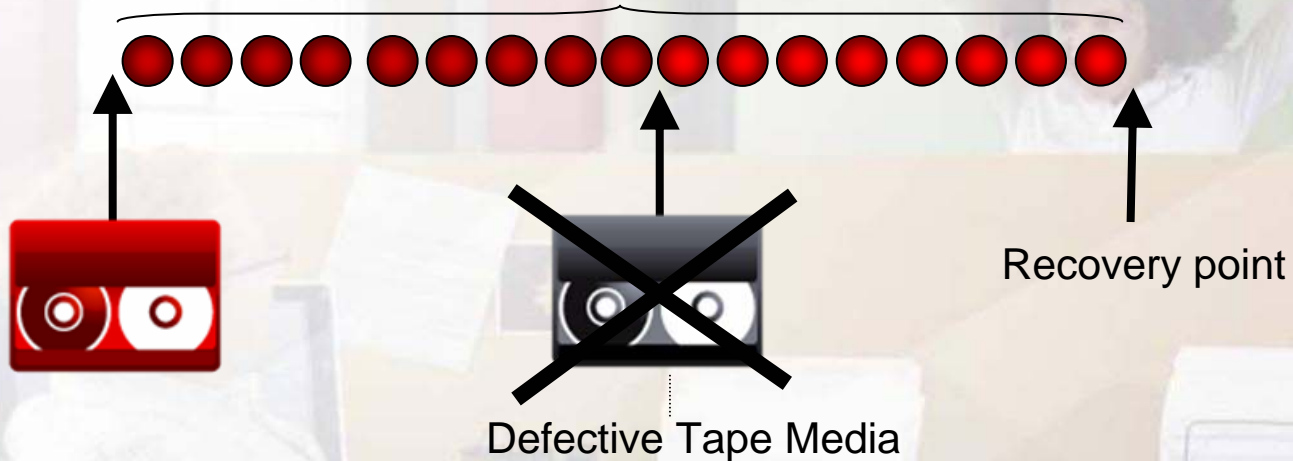
A red icon with two white circles inside, resembling a backup tape or a specific software logo, is centered in a white rounded rectangle.

**Enables Backup on  
Production System  
With No Downtime**

# Tape Media Error Recovery

● **RecoverNow Is Resilient To Tape Media Errors** - if a tape you are restoring from is defective or damaged you can select the next oldest tape and start recovery from that point.

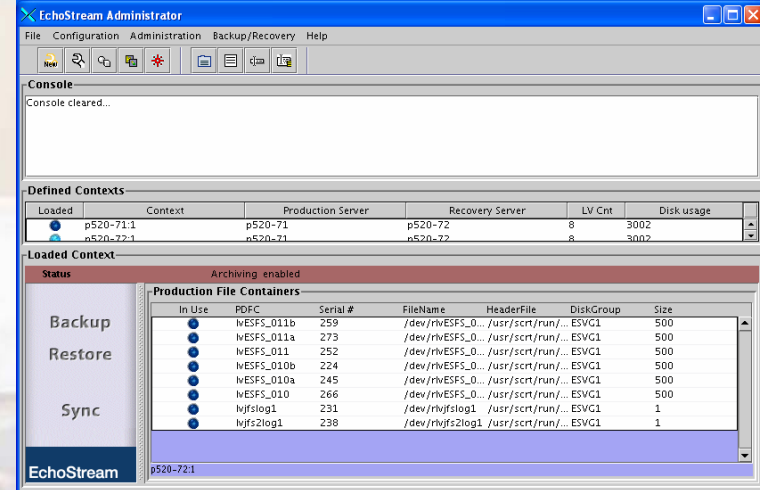
All transactions (journal receivers) are safely stored on the RecoverNow platform



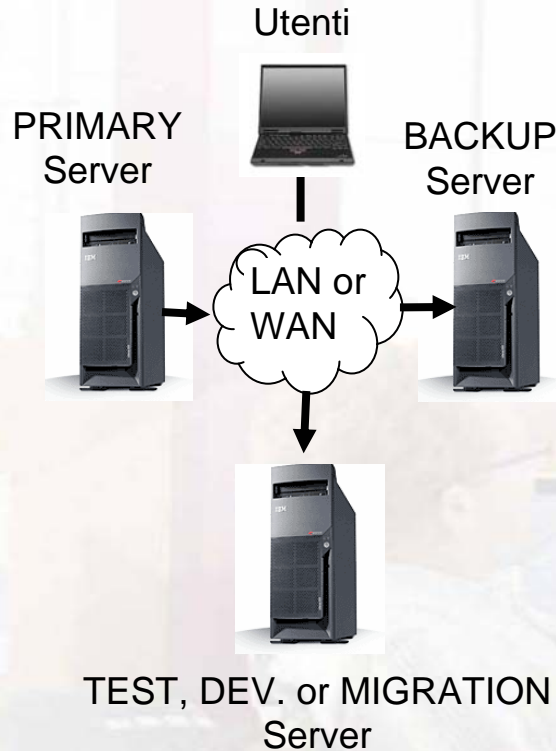
● **What can cause a tape media error?** – humidity, bad or old tape, damaged, or just plain un-readable.

## ECHOSTREAM™ HA CLUSTER™

- **EchoStream for AIX**
  - Change based, asynchronous replication
  - Any-Point-in-Time recovery enabled by CDP™
  - Target side clones/read-write snapshots
- **EchoCluster for AIX e LINUX**
  - Simplified cluster management
  - Automated failover



### “DoubleTake”



### Technical Benefits

- Replica a livello di file
- Fail over automatico
- Topologia "uno a uno" o "uno a molti"
- Nessuna restrizione a livello di IP subnet
- Semplice da installare ed utilizzare
- Replica praticamente qualsiasi applicazione windows

### Business Benefits

- DR per windows a prezzi competitivi
- Replica a qualsiasi distanza
- Bassa occupazione di banda
- Facile da installare ed utilizzare
- Utilizzabile anche per migrazioni e test

**“Disaster recovery & data distribution per Windows”**

**“Utilizzate DoubleTake per DR oppure per migrazione e test di ambienti Windows”**







Leaders Have  
Vision

**GRAZIE PER L'ATTENZIONE!!**



Fiorenzo Toffoli  
Vision Solutions Dir. Sud Europa

Leaders have Vision ... *Vision is leader*

