

## SSD Analyzer Tool for 7.1

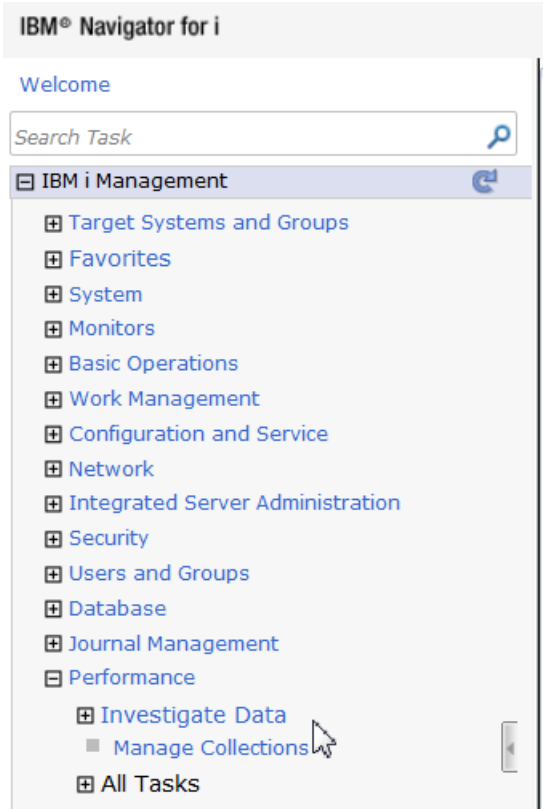
The SSD Analyzer Tool is designed to help you determine if SSDs could help improve performance on your system(s). **The tool works with the performance data that is collected on your system at IBM i release 7.1.** You will download a PML file and store it within the Integrated File System (IFS) on your system. Accessing the graphs and reports is accomplished using IBM i Performance Data Investigator.

Data that was collected on a previous release of IBM i cannot be analyzed with this version of the tool. For releases 5.4 and 6.1, you must use the command based version available at <http://www-03.ibm.com/support/techdocs/atmastr.nsf/WebIndex/PRS3780>.

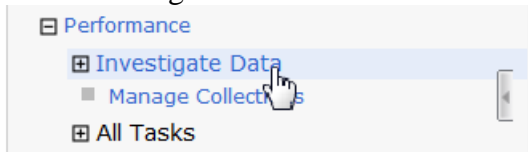
### **IBM i 7.1 Installation Instructions**

1. Download the file *SSD\_analysis\_for\_7.1.pml* from <http://www-03.ibm.com/support/techdocs/atmastr.nsf/WebIndex/PRS3780>
2. Using FTP or a mapped drive, upload the file *SSD\_analysis\_for\_7.1.pml* to the directory  
  
`/qibm/userdata/OS400/iSeriesNavigator/config/PML`  
  
if you have not applied the October 2015 PTFs (see <https://www.ibm.com/developerworks/community/wikis/home?lang=en#!/wiki/IBM%20i%20Technology%20Updates/page/2015%20-%20SPs> for more information). If you have applied the October 2015 PTFs, place the file in the directory  
  
`/QIBM/userData/OS400/Navigator/config/PML`
3. Before starting Performance Data Investigator, include the user profiles that will perform performance analysis by updating the authorization lists QPMCCDATA and QPMCCFCN.
4. Start Performance Data Investigator by pointing your browser to URL <http://yoursystemname:2001>
5. Navigate to Investigate Data by expanding IBM i Management and then expanding Performance

# IBM i SSD Analyzer Tool for 7.1

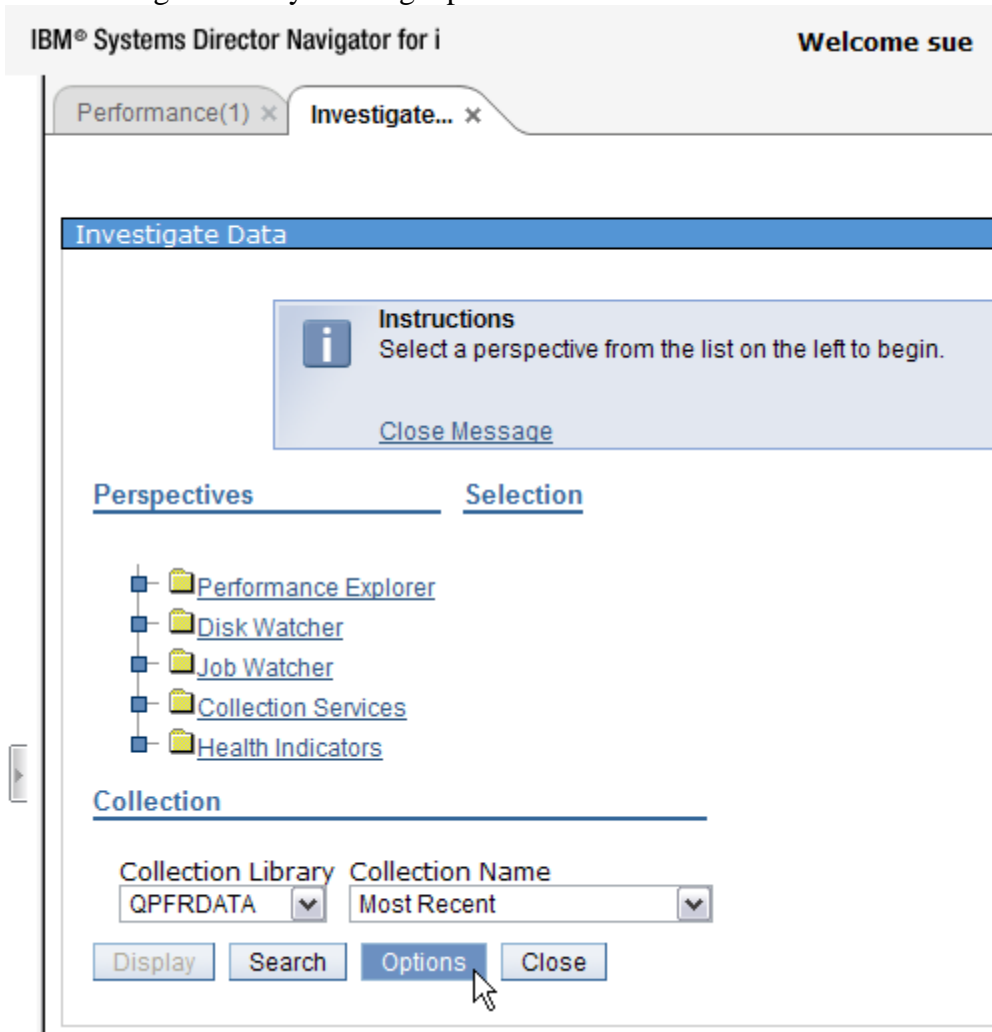


## 6. Select Investigate Data

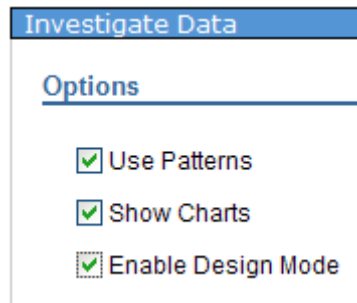


# IBM i SSD Analyzer Tool for 7.1

7. Enable design mode by clicking Options



8. Click the box in front of “Enable Design Mode“ and click OK.



and

## IBM i SSD Analyzer Tool for 7.1

9. Click “Refresh Perspectives”

**Collection**

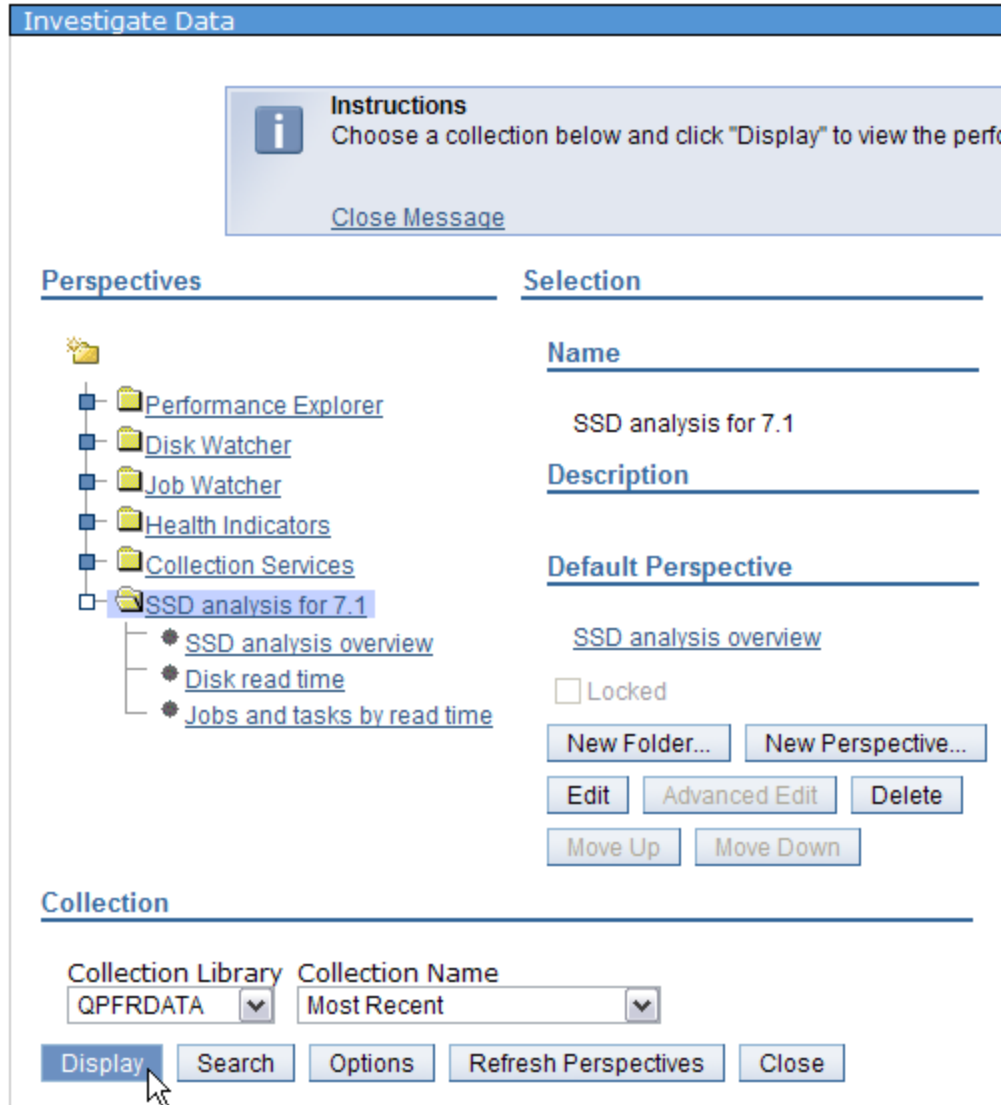
---

Collection Library: QPFRDATA   
Collection Name: Most Recent

and you should now see **SSD analysis for 7.1** listed in the perspectives tree.

## **Using the SSD Analysis for 7.1**

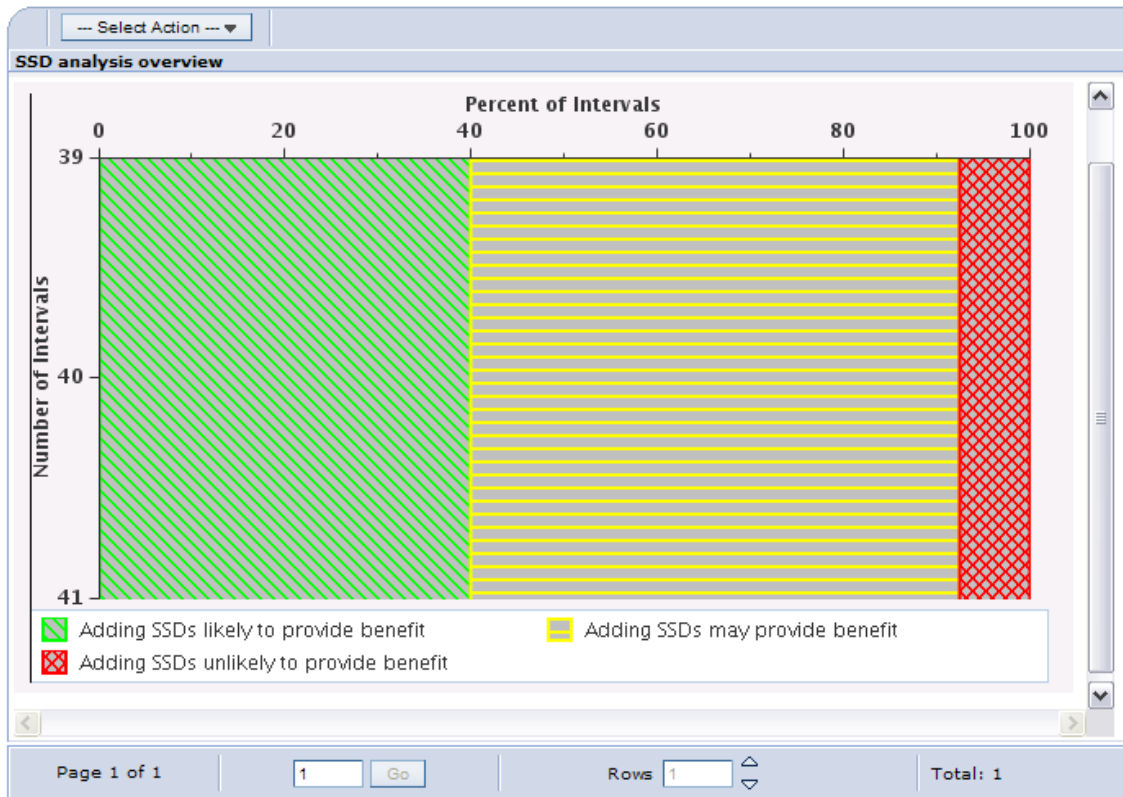
To use the tool, you simply need to select the perspective, point to a collection using the drop down boxes, and click display.



On the resulting panel, you will see the SSD analysis overview. It provides a high level overview of the relative likeliness for SSDs to provide a performance improvement.

# IBM i SSD Analyzer Tool for 7.1

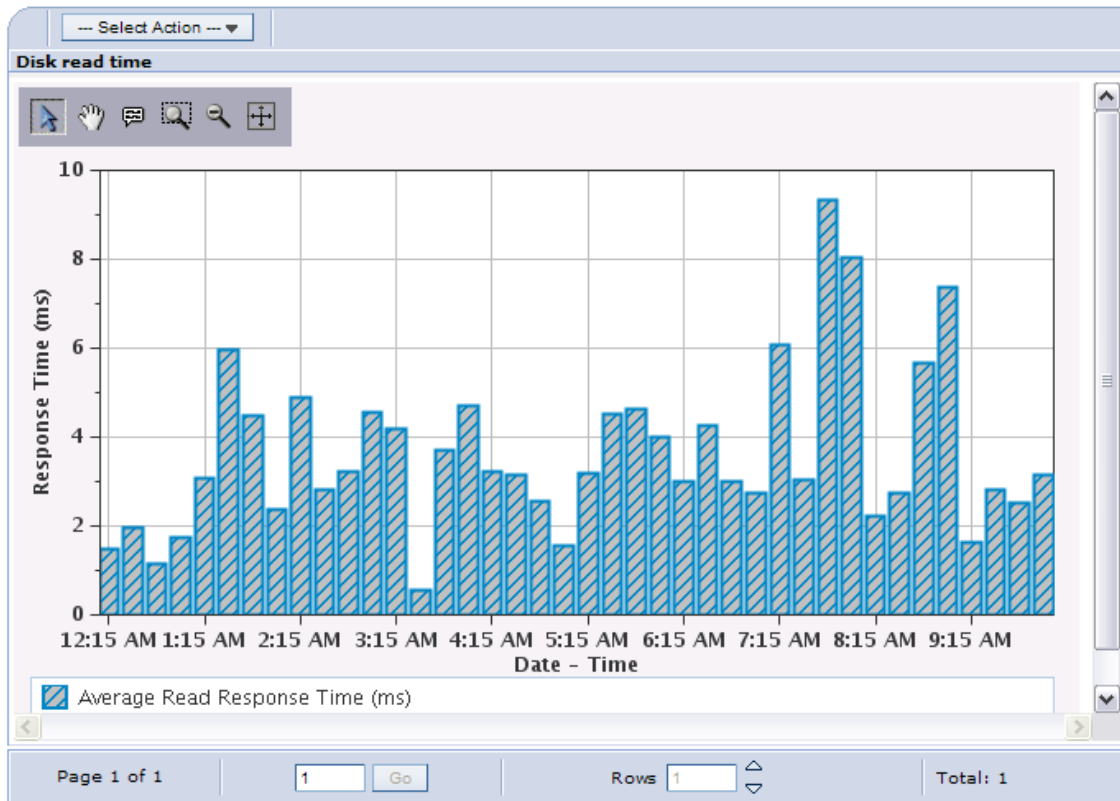
## SSD analysis overview



If you select **Disk read time**, you will see a graph depicting average read response time for the selected collection.

# IBM i SSD Analyzer Tool for 7.1

## Disk read time



And finally, selecting **Jobs and tasks by read time**, results in a table showing a subset of the information available for the jobs running during the collection. By default the information is sorted based on the disk read time. You may change the sort order by clicking any column header. Columns in the table are:

- Job name/user/number plus thread ID
- Disk read time in seconds
- Disk non-read time in seconds
- CPU time in seconds
- Average read time per operation in seconds
- Average seconds of read time per CPU second
- Time the job was idle in seconds

# IBM i SSD Analyzer Tool for 7.1

## IBM i SSD Analyzer Tool for 7.1 Terms and Conditions

### 1. LICENSE: USE OF THE "IBM i SSD Analyzer Tool for 7.1":

IBM grants you a nonexclusive license to use the IBM i SSD Analyzer Tool for 7.1 (the "Program"). You may not (1) use, copy, modify, or distribute the Program except as provided herein; (2) reverse assemble, reverse compile, or otherwise translate the Program except as specifically permitted by law without the possibility of contractual waiver; or (3) sublicense, rent, or lease the Program.

### 2. NO WARRANTY:

SUBJECT TO ANY STATUTORY WARRANTIES WHICH CANNOT BE EXCLUDED, IBM MAKES NO WARRANTIES OR CONDITIONS EITHER EXPRESS OR IMPLIED, INCLUDING WITHOUT LIMITATION, THE WARRANTY OF NON-INFRINGEMENT AND THE IMPLIED WARRANTIES OF MERCHANTABILITY AND FITNESS FOR A PARTICULAR PURPOSE, REGARDING THE PROGRAM OR TECHNICAL SUPPORT, IF ANY. IBM MAKES NO WARRANTY REGARDING THE CAPABILITY OF THE PROGRAM TO CORRECTLY PROCESS, PROVIDE AND/OR RECEIVE DATE DATA WITHIN AND BETWEEN THE 20TH AND 21ST CENTURIES.

### 3. LIMITATION OF LIABILITY:

NEITHER IBM NOR ITS SUPPLIERS WILL BE LIABLE FOR ANY DIRECT OR INDIRECT DAMAGES, INCLUDING WITHOUT LIMITATION, LOST PROFITS, LOST SAVINGS, OR ANY INCIDENTAL, SPECIAL, OR OTHER ECONOMIC CONSEQUENTIAL DAMAGES, EVEN IF IBM IS INFORMED OF THEIR POSSIBILITY. SOME JURISDICTIONS DO NOT ALLOW THE EXCLUSION OR LIMITATION OF INCIDENTAL OR CONSEQUENTIAL DAMAGES, SO THE ABOVE EXCLUSION OR LIMITATION MAY NOT APPLY TO YOU.

### 4. GENERAL

Nothing in this Agreement affects any statutory rights of consumers that cannot be waived or limited by contract.

IBM may terminate this license if you fail to comply with the terms of this Agreement. If IBM does so, you must immediately destroy the Program and all copies you made of it.

You agree to comply with all applicable export laws and regulations. Neither you nor IBM will bring a legal action under this Agreement more than two years after the cause of action arose unless otherwise provided by local law without the possibility of contractual waiver or limitation.

Neither you nor IBM is responsible for failure to fulfill any obligations due to causes beyond its control.

IBM does not provide program services or technical support for this Program. However, questions can be directed via e-mail to [smbaker@US.IBM.COM](mailto:smbaker@US.IBM.COM). IBM will endeavor to reply to these questions as expeditiously as possible.

The laws of the State of New York govern this Agreement.

© Copyright IBM Corporation 2012