

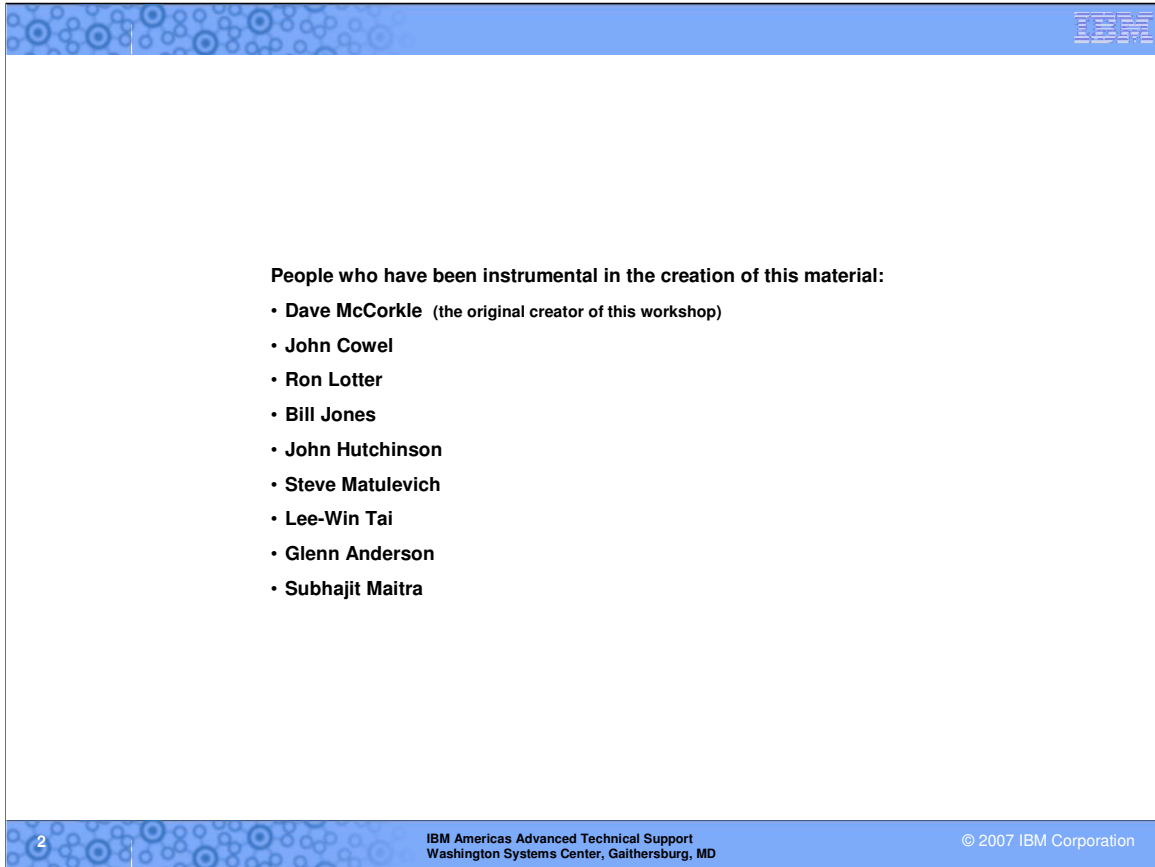


ZSOA2

SOA and ESB and System z An Introduction and Overview

Don Bagwell
IBM Washington Systems Center
dbagwell@us.ibm.com

© 2007 IBM Corporation



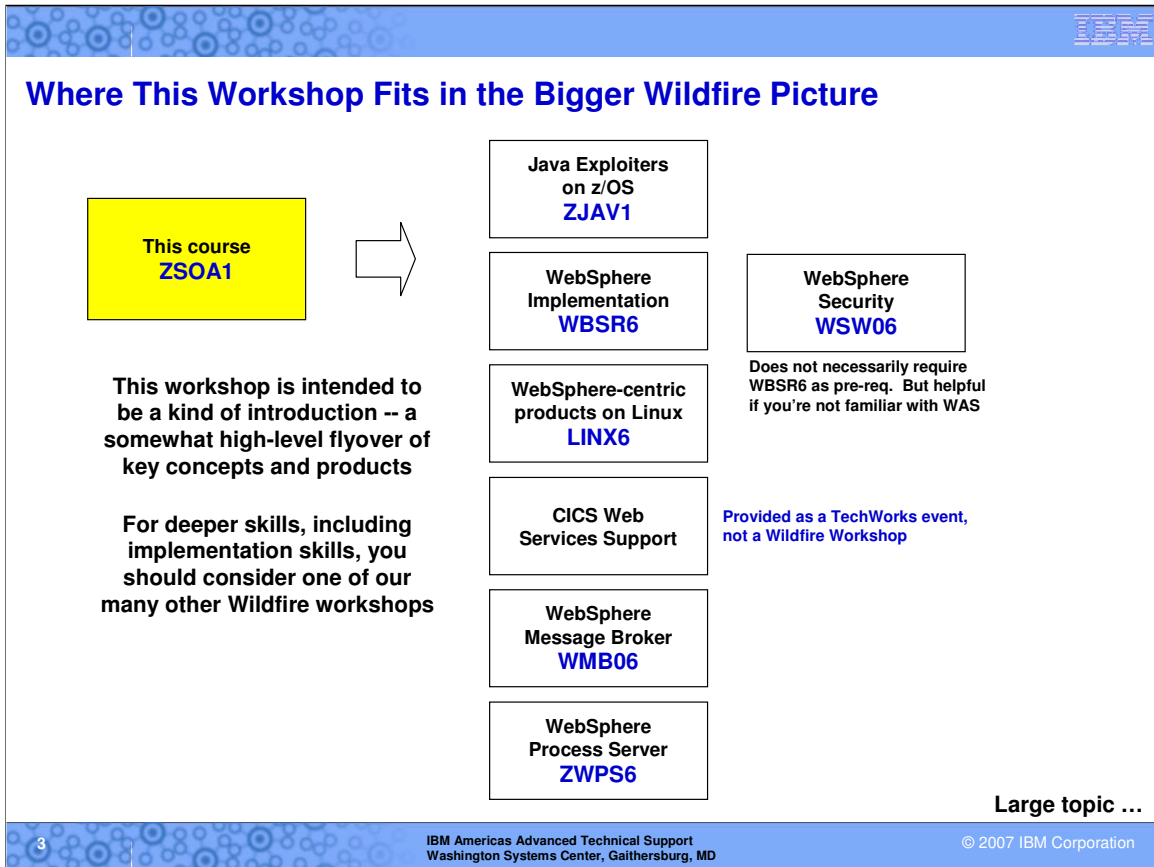
People who have been instrumental in the creation of this material:

- **Dave McCorkle** (the original creator of this workshop)
- **John Cowel**
- **Ron Lotter**
- **Bill Jones**
- **John Hutchinson**
- **Steve Matulevich**
- **Lee-Win Tai**
- **Glenn Anderson**
- **Subhajit Maitra**

2

IBM Americas Advanced Technical Support
Washington Systems Center, Gaithersburg, MD

© 2007 IBM Corporation

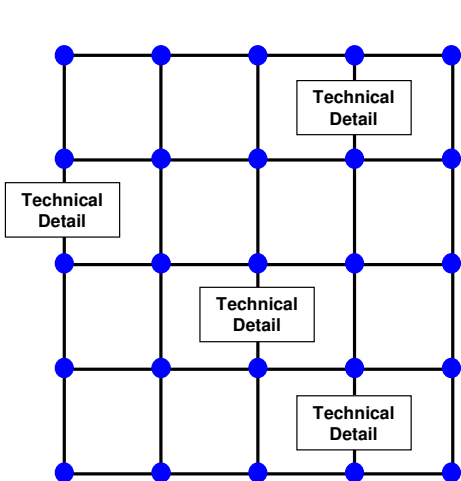


We start by pointing out where this workshop -- the one you're attending right now -- fits within the broader "Wildfire" series of workshops from the Advanced Technical Support organization. This workshop can be considered a "feeder" workshop in that its purpose and objective is to familiarize you with the key concepts and prepare you to proceed to more in-depth instruction. As such, this workshop will not give you anywhere near the technical depth of the other ones. It will give you *some* technical depth, however.

IBM

The Key Role of Building Conceptual Knowledge

Details are hard to keep track of unless you have a conceptual understanding of how the details relate in context. All learning is done that way.



Conceptual Framework

A good deal of this workshop is dedicated to building the conceptual framework and supplying *just enough* technical detail to make sense of it all

We'll do this with a lot of *physical* representations rather than just logical pictures

By no means does this workshop try to make you an implementation and operational expert in all of these products. Impossible in the time frame we have

Please try to keep that in mind as we go through the workshop.
You'll learn more if you keep focus on larger concepts

Framework of workshop ...

4
IBM Americas Advanced Technical Support
Washington Systems Center, Gaithersburg, MD
© 2007 IBM Corporation

I am a firm believer in the notion that all learning is accomplished by first coming to grips with the conceptual framework of the topic, then fitting technical details onto that framework. Understanding a technical detail is nearly impossible if you don't have at least some notion of the context of that detail.

Therefore, what this workshop is going to focus on quite a bit is establishment of this conceptual framework. We'll offer quite a bit of technical detail -- perhaps more than can be truly comprehended in the time we have -- and that detail will always be presented in the context of the larger conceptual framework. One of the strategies we'll employ is to represent things in their physical structure rather than purely logical pictures. Logical pictures are useful, and we'll have more than a few of those as well ... but sometimes it's important to answer the question, "What is it?" in a practical manner.

Please understand ... it is impossible to make any of us experts on all this in a few days. It's just too big a topic space. So our objective is to introduce you to the key concepts and key details, and from there you'll be able to learn more. That learning may then be accomplished through self instruction, or through attending the other workshops. If you keep this in mind, you'll get much more out of this workshop. If you try to commit to your memory every specific detail you'll not get as much from your time here.

Framework of this Workshop

Here's how we'll divide up the workshop:

- **Introduction and Overview**

Services, SOA, ESB and the IBM products that map to the architecture

- **Web Services**

More detail on what it is and the way key IBM systems provide Web Services Support

- **The Enterprise Service Bus**

Introduce the the key functions of the ESB and provide a discussion of the two main products that implement it -- WebSphere Message Broker and WebSphere ESB.

- **Workflow Process Management**

Introduce the concept of tying services together and managing them with a workflow engine such as WebSphere Process Server

- **Getting Started, SOA Lifecycles and Wrapup**

A very high-level discussion of key concepts of SOA implementation

Administration ...


5

IBM Americas Advanced Technical Support
Washington Systems Center, Gaithersburg, MD

© 2007 IBM Corporation

So here's how this workshop is constructed:

- **Overview** -- where we go over the high-level concepts and establish the terminology we'll use throughout the workshop.
- **Web Services** -- an important first step in building an SOA. Web Services is an industry standard way of defining a "service" and invoking it. In this unit we'll also show how some of the key IBM systems such as WebSphere, CICS, IMS and DB2 support Web Services so existing applications can be made available as Web Services.
- **Enterprise Service Bus** -- at the heart of SOA is something called the Enterprise Service Bus, which is a kind of "master controller and traffic cop" function for all the things requesting services and things offering services. We'll cover what an ESB is supposed to do, and explore the two ESB offerings from IBM: WebSphere Enterprise Service Bus and WebSphere Message Broker.
- **Workflow Process Management** -- SOA is not just for computer programs ... it also encompasses other business processes that can be considered a "service". The concept behind Process Management is to provide a structure over all the pieces of your SOA that helps coordinate the flow and steps within a bigger process. IBM's offering in this space is WebSphere Process Server (WPS).
- **Getting Started, SOA Lifecycles and Wrapup** -- where we'll wrap it up and offer some insight into the topic getting started with SOA.



Administration and Introductions

- Start and Stop times each day
- Breaks and lunch
- Restrooms
- Cell phones and pagers
- Fire alarms
- Introductions
 - Name
 - Where's home?
 - A little about your background:
Architect, application developer, system administrator, system programmer, DB2, CICS, IMS, MQ, UNIX, etc

6

IBM Americas Advanced Technical Support
Washington Systems Center, Gaithersburg, MD

© 2007 IBM Corporation

Administration information.

End of Unit