

# TLC NetConnect 5.0

---

## Setting up a Second Proxy Server

TLC  
Connect  
Net

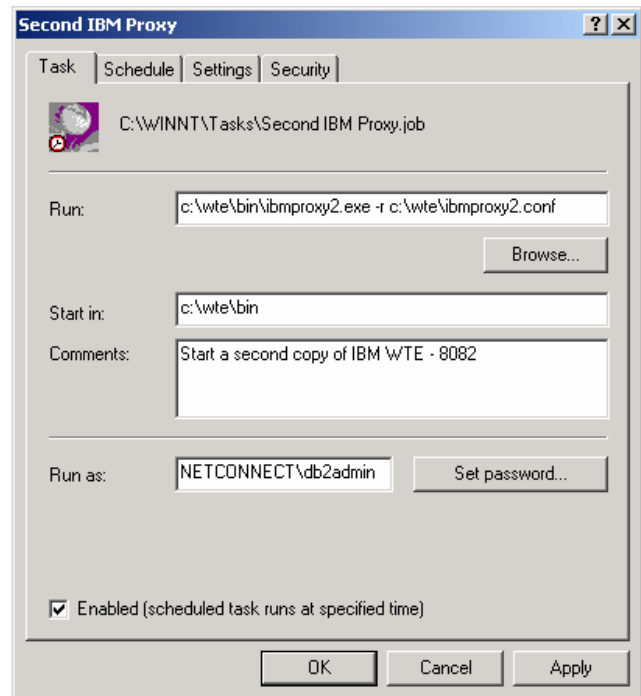


**Prepared by: Richard Attenborough**  
**NetConnect Product Manager**  
**IBM Canada K-12 Education**  
**Manual Release v2 , Nov 5,2004 - Build 51.2 or higher**

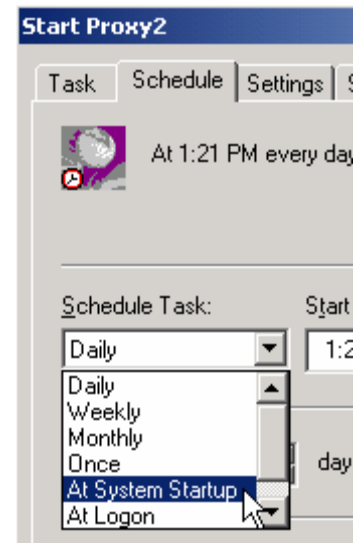
- 1) Copy the file **NVFILTER2.DLL** to **C:\NETCONNECT**
- 2) Copy the file **C:\WTE\BMProxy.CONF** to **C:\WTE\BMProxy2.CONF**
- 3) Edit the file **C:\WTE\BMProxy2.CONF**
  - a. Find the references to **C:\NETCONNECT\NVFILTER.DLL** and change them to **C:\NETCONNECT\NVFILTER2.DLL**
  - b. Find the reference to **C:\WWWCache** and change it to **C:\WWWCache2**
  - c. Find the reference to **8080** and change to **8082**
- 4) Create a new Cache file for the second proxy
  - a. Type **CD \WTE\BIN**
  - b. Type **HTCFORMAT -FILE C:\WWWCache2 65536**
  - c. When asked if you are sure answer **Y** for yes.
- 5) Make the second instance identifiable
  - a. Type **CD \WTE\BIN**
  - b. Type **COPY IBMProxy.EXE IBMProxy2.EXE**
- 6) Set the new environment Variables
  - a. Right click on **My Computer** and choose **Properties**
  - b. Click on the **Advanced** tab and click on the **Environment Variables** button.
  - c. Add in the following new **SYSTEM VARIABLES**

Variable Name	Value
SITES_FILE2	C:\NETCON~1\DATA\LISTS\SITES2
SITES_LOG2	C:\NETCONNECT\LOGS\NVFILTER2.LOG
SITES_PROHIBITED_FILE2	C:\WWW\HTDOCS\PROHIBIT.HTM

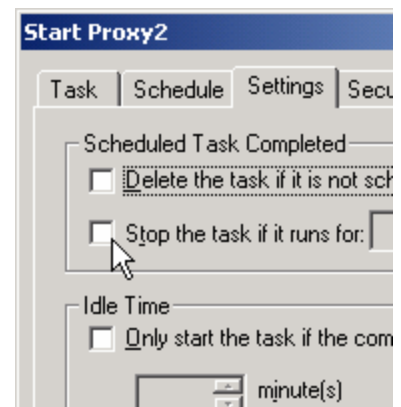
- d. Click on the **OK** button.
- 7) Set Second proxy to auto-run
  - a. Run **Start -> Settings -> Control Panel -> Scheduled Tasks**
  - b. Right-Click on the White space of the window
  - c. Choose **NEW->Scheduled Task**
  - d. Label the Scheduled Task as **Second IBM Proxy**
  - e. Double Click on the new entry
  - f. In the **RUN** line enter **C:\WTE\BIN\IBMProxy2.EXE -r C:\WTE\BMProxy2.CONF**
  - g. In the **START IN** field enter **C:\WTE\BIN**
  - h. In the **COMMENTS** field enter **Start a Second copy of IBM WTE – 8082**



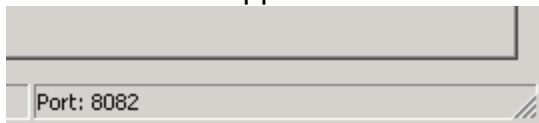
- i. Click on the Schedule Tab
- j. Under **Schedule Task** choose **At System Startup**



- k. Click on the **SETTINGS** tab
- l. Make sure that **STOP THE TASK IF IT RUNS FOR...** is **UNCHECKED**.
- m. Click on the **OK** button
- n. You will be prompted for userid and the password for **the RUN AS** information. Enter **DB2ADMIN** and the appropriate password.



You can test out the scheduled task by right clicking on it and choosing **RUN**. The proxy window should appear on the screen with Port Number labeled as **8082**.



8) Restart the Server.

## NOTES

- 1) The new scheduled task will run immediately after the server starts.
- 2) It has its own cache file
- 3) It will log its activity to the same proxylog file (by default)
- 4) It has its own Filtering file (**c:\netconnect\data\lists\sites2**) so that a totally separate filtering rule system can be applied.
- 5) The new filtering list can be accessed by the NCServerAdmin.
- 6) ProxyCheck does **NOT** monitor this proxy (it is not a service).