

IBM® K-12 

TLC NetConnect 5

TLC NetConnect is IBM's state-of-the-art internet management solution for K-12 schools. It provides internet access for schools and gives you the tools to easily manage what data passes into and out of your network.

IBM
TLC NetConnect
5



K-12 

Around the world, IBM's TLC NetConnect is bringing a host of features to the modern classroom. These features benefit both the student and the school district.

TLC NetConnect is IBM's internet management tool for K-12 schools. Over the past 9 years it has been modified and upgraded to match the increasing opportunities offered by the internet and the increasing requirements of the student and teacher in the classroom.

One of the most important tools the internet offers is e-mail. People from around the world and in all walks of life use e-mail. It is one of the first skills taught to any computer user. TLC NetConnect makes e-mail easy by providing a unique address for every person in the school and a user-friendly interface for even the youngest students.

The TLC NetConnect clients provide all of the standard e-mail features in an interface designed for school use. In addition, some features are uniquely suited to helping students function in today's world. Both **Windows and Web** clients are available. Users dealing with people from different countries are also able to translate any message between **English, French, German, Italian and Spanish!** (Coming soon - Japanese, Korean, Chinese and Portuguese).

Management of TLC NetConnect is easy and powerful. Administrators can control the types of attachments that are allowed and can control automatic deletion of most e-mail viruses. TLC NetConnect also provides for both content filtering of the e-mail messages and "Spam" filtering to reduce the amount of irrelevant mail reaching the users. Tools are provided to manage students' access to e-mail. You can disable their ability to send e-mail, limit the e-mail to just within the school or allow them to communicate with anyone on the internet.

Beyond E-mail, TLC NetConnect also provides the schools with advanced Discussion Forum support. The Discussion Forums can be setup within one school or shared among many. Forums can be limited to just a select group

of users, configured so that it is moderated or even set to "forced subscription" to help enforce participation.

The single most popular use of the internet is the World Wide Web. TLC NetConnect provides powerful tools to support this exciting area. The most popular and robust web server in the world is built into the system. An industrial-strength "Caching Proxy" server is provided to improve performance. The Proxy also controls access to, and protects students from, inappropriate web sites, advertisements, pop-ups and web based viruses. Powerful filtering tools enable the school to easily control where students can and cannot get to on the web. A uniquely simple method of creating and publishing web pages is provided. Students can easily build a web page and submit it for approval. The teacher can then publish the web page by clicking on just one button.

IBM's TLC NetConnect is a solution that is designed to fit well into today's 21st century K-12 schools.





The TLC NetConnect Solution

Server Software

We use IBM's industrial-strength components, DB/2 and WebSphere, to provide industrial-strength reliability and performance.

E-mail Server: Fully-featured e-mail service is provided using standard SMTP and POP3 protocols. Written in Java, the TLC NetConnect e-mail system includes such advanced features as Spam and Content filtering of the messages.

Discussion Forum Server: NNTP based discussion forums have been expanded to also provide the users with Private and Moderated discussion areas.

School Based Web Server: Based on the Apache web server, the IBM HTTP Server allows you and your students to publish web pages easily.

Proxy Server: Provides a safe environment for students by blocking access to undesirable web sites. Through IBM's web page caching technology, you can reduce your communications costs while improving performance. It will also automatically pre-cache the most visited sites from the previous day. Use of the proxy server is logged and detailed reports are generated each morning. The reports show who went where on the web as well as showing which users were prevented from getting to the undesirable sites.

Remote Support Tools: A variety of support tools are provided, including IBM Director. These programs help district technicians manage the technology from a central location.

Client Software

Web Browser: Access to the World Wide Web is provided through Netscape Navigator™, Internet Explorer™ or the open source browser, Mozilla.

E-mail: Two separate e-mail clients, each customized for the unique requirements of the school environment, allow students and teachers access to their personal e-mail. The WebMail client provides access from anywhere to all of the messages on the server, while the Windows client can be securely limited and controlled on the network file server. Both clients allow the sending and receiving of MIME compatible messages within the school and around the world. The Windows client also provides support for full HTML and font formatting of the messages. As well, the Windows client provides Text to Speech capabilities in both English and French so that messages can be read out loud to the user.

Discussion forums: The Windows client provides advanced support for the expanded features of our Discussion forum server. Included is full, and automatic, support for the forum moderator to preview messages prior to allowing them to become visible to the other participants of the forum.



Included Services

Server build, on-site server Setup, Client software installation, testing and administrator training.

One Year of Telephone Technical Support (TTS)

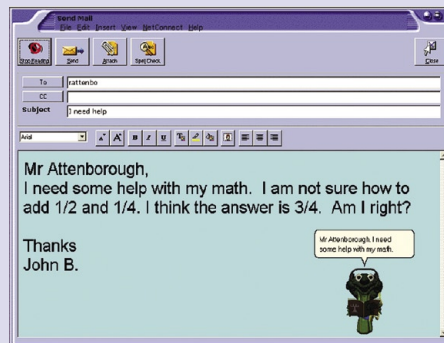
Minimum Hardware Requirements

Server: Pentium III – 2.8 GHz with 1 GB of Ram

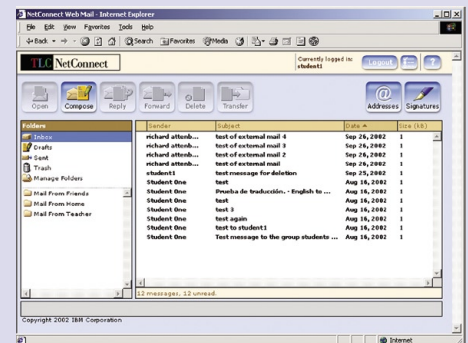
Client: Minimum - Pentium 100 MHz with 32MB of Ram

Recommended – Pentium II - 233 with 64 MB of Ram

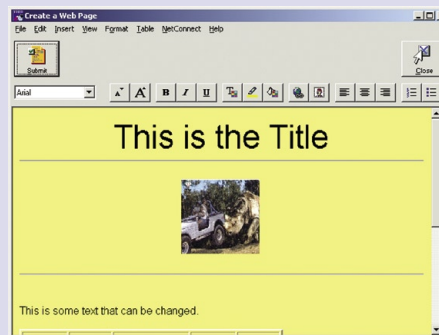
Supported Client Operating Systems: Windows 98, 2000, XP,
Webmail client also runs on Mac OS 9, 10, and Linux



Windows E-mail



Webmail Client



Web Page Creator



Web Publisher

For more information, please call 1-800-66-LEARN (665-3276)
or visit www.can.ibm.com/k12