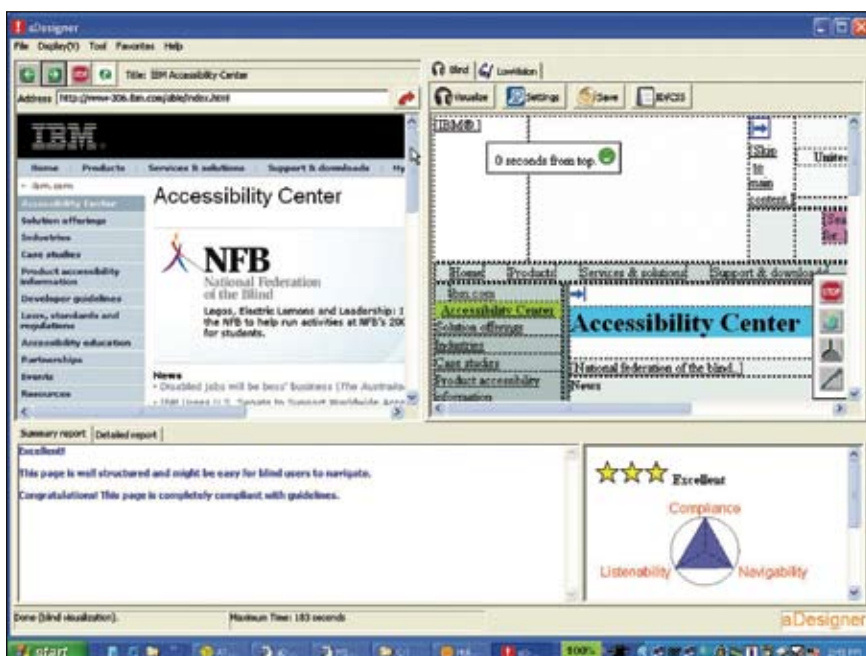


A simulator that helps Web designers ensure their pages are accessible and usable by people who are visually impaired.

IBM aDesigner



Highlights

- ***Includes simulation modes to present how Web pages might be viewed by users who are blind, color blind or have low vision***
- ***Promotes early awareness of potential accessibility and usability issues***
- ***Checks site for compliance against established accessibility guidelines***
- ***Includes a site-wide analyzer with graphical features***

Focus on usability

Certain types of Web content such as highly graphical material can make Web pages difficult to read and navigate for people with visual impairments—even for those who use screen readers or other assistive technology. IBM aDesigner is a simulation tool that helps Web designers identify these potential design issues. It enables Web designers to experience their site as a user who is blind, color blind or has low vision might experience it, allowing designers to focus on usability as well as accessibility.

Spot potential problems early

IBM aDesigner can evaluate Web page elements that may affect usability including color contrast, font size, alternate text for images and page links. IBM aDesigner is also a valuable test tool for compliance. With aDesigner, Web pages can be evaluated against established U.S. and Japanese accessibility guidelines, with possible violations reported and explained. This information gives Web designers immediate feedback, allowing them to address potential obstacles even before Web pages are published.

Simulate vision impairments

With aDesigner's simulation mode for low vision, Web designers can experience firsthand what people with weak eyesight or cataracts may see when visiting their Web pages. The simulator can make adjustments such as blurring or darkening the Web page's text and images to represent certain vision impairments.

IBM aDesigner can also simulate visual challenges associated with color blindness including adjusting images on the page, such as making red lines indistinguishable from green lines.

In this mode, aDesigner displays the original page next to the simulated page to better compare and contrast the views. aDesigner can synchronize the items in the problem list with the browser view position to help designers locate accessibility issues.

Technical Requirements

Processor	500 MHz processor
Memory	256MB (512MB recommended)
Hard disk drive	100MB of available space (200MB recommended)
Graphics	SVGA 800x600 or higher
Operating system	Microsoft® Windows® 2000 or XP
Internet	Internet service provider connection
Internet browser support	Microsoft Internet Explorer version 6.0 or higher
Multilanguage support	English and Japanese

Identify usability issues for people who are blind

IBM aDesigner's simulation mode for users who are blind can help identify Web pages that are inaccessible and/or unusable to people who use screen readers to access Web content. To find potential problems, for instance, the simulator can calculate how long a screen reader will take to reach each element on a Web page. If problems are found, aDesigner will make recommendations that help increase usability.

IBM aDesigner also has effective features for checking the appropriateness of the alternative (alt) text associated with Web page images and image maps, which are read by screen readers. The tool can identify areas in which *alt* texts are not being used properly.

Site-wide analyzer

IBM aDesigner can evaluate an entire Web site by combining an aDesigner site crawling function and a site-wide analyzer. The analyzer summarizes the evaluation results of gathered pages to compute the overall rating of the whole Web site and provides a graphical representation of that site's statistics. Analysis results can be exported to text files and images, enabling smooth communication between administrators and designers.

The analyzer can even create a comparison graph of accessibility and usability ratings from different divisions or departments within an organization. Web auditors can use this function to identify problems within specific divisions or departments. Another graph has all of the pages' ratings gathered by the crawler, which helps users understand the characteristics of a site. The site-wide analyzer can also show a "history view" that allows Web auditors to easily review how a site's accessibility has progressed during development and to take necessary actions.

In addition, the tool has a problem analysis mode. In this mode, the problems detected by aDesigner are summarized and sorted in a problem table.

Learn more

Find out how incorporating accessibility into your Web page design with IBM aDesigner can help improve usability, not just accessibility, for customers and employees who are visually impaired. For more information, visit the IBM Human Ability and Accessibility Center at ibm.com/able



© Copyright IBM Corporation 2005, 2006

IBM Corporation
IBM Human Ability and Accessibility Center
11400 Burnet Road
Austin, TX 78758

U.S.A.

Produced in the United States of America
11-06
All Rights Reserved

IBM and the IBM logo are registered trademarks of International Business Machines Corporation in the United States, other countries or both.

Microsoft and Windows are trademarks of Microsoft Corporation in the United States, other countries or both.

Other company, product and service names may be trademarks or service marks of others.

References in this publication to IBM products and services do not imply that IBM intends to make them available in all countries in which IBM operates.

Any references in this information to non-IBM Web sites are provided for convenience only and do not in any manner serve as an endorsement of those Web sites. The materials at those Web sites are not part of the materials for this IBM product and use of those Web sites is at your own risk.

IBM reserves the right to alter specifications and other product information without prior notice.