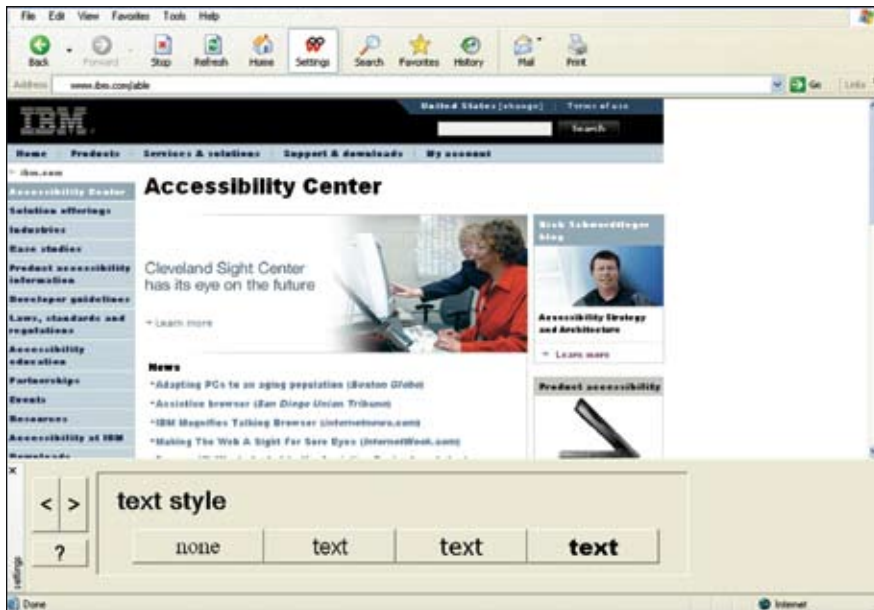


Technology that customizes Web pages for older users and people with disabilities.



IBM WebAdapt2Me



Access anywhere, any time

WebAdapt2Me can be launched in a standard Web browser. Because preferences can be preset and stored on a server, users can view Web pages with their individual preferences from any computer that has the software installed. These preferences can be saved and used from session to session, enabling users to view Web pages the way that works best for them.

Additionally, the technology manipulates Web pages without requiring Web developers to rewrite or change Web site content—no change is made to the Web page itself.

Highlights

- ***Enlarges text to enhance the readability of Web pages***
- ***Reduces visual clutter when viewing Web pages***
- ***Reads Web page text aloud***
- ***Uses unique keyboard technology to automatically adjust to users' needs***

Customize Web pages

Despite standards for Web accessibility, many Web pages remain difficult to use for older users and people with various disabilities. IBM WebAdapt2Me is software that enables people who have vision, cognitive or hand limitations to set preferences that customize the way Web pages are presented to them.

WebAdapt2Me is ideal for government agencies, organizations and businesses that want to improve Web access for employees, citizens or customers.

Improve readability

WebAdapt2Me assists people who are visually impaired by enabling them to magnify everything on a Web page—from text to browser controls—up to 250 percent. For example, users can click on the text-sizing buttons until the text is big enough for them to read comfortably.

Requirements

Processor	500MHz processor
Memory	125MB (256MB recommended for Microsoft® Windows® XP)
Hard disk drive	10MB of available space (248MB for Speak Text support)
Graphics	SVGA 800x600 or higher
Operating system	Microsoft Windows 98, ME, 2000 or XP
Internet	Internet service provider connection
Internet browser support	Microsoft Internet Explorer, version 5.5 or higher
Speak Text support	External or built-in speakers or headphones
Mouse Keys support	Keyboard with separate keypad on right side
Multilanguage support	English, Spanish, Brazilian Portuguese, French, German, Italian, Korean, Japanese and Chinese

Many people with cognitive impairments or low vision benefit from the ability of WebAdapt2Me to expand the space between lines of text and remove distracting backgrounds and animation. The technology provides choices that help make text, background and links easier to see by using high-contrast colors and reformatting pages into single columns. WebAdapt2Me, with its text-to-speech capability, provides additional benefit for low vision users.

Type and navigate with ease

Users with hand-movement limitations can take advantage of WebAdapt2Me's keyboard utility. People who have difficulty typing with accuracy—including those with tremors, arthritis or who have had a stroke—may hold down keys too long or double-click letters. To correct these errors, WebAdapt2Me samples typing, detects errors and automatically adjusts the keyboard sensitivity to accommodate different typing styles. This feature is particularly useful for people who frequently conduct Web searches, fill in forms online, participate in online discussion groups or use Web-based e-mail.

Magnification preferences can also help people with hand-movement impairments navigate the Internet by making it easier to select and use browser controls.

Learn more

The Web adaptation technology created for WebAdapt2Me has received several awards for research innovation including the da Vinci Award from the Engineering Society of Detroit and the National Multiple Sclerosis Society, Michigan Chapter; Best New Ability Research Award from the New Freedom Foundation; and Product of the Year Gold Award from the National Business & Disability Council.

For more information about WebAdapt2Me, visit the IBM Human Ability and Accessibility Center at ibm.com/able



© Copyright IBM Corporation 2006

IBM Corporation
IBM Human Ability and Accessibility Center
11400 Burnet Road
Austin, TX 78758
U.S.A.

Produced in the United States of America
11-06
All Rights Reserved

IBM and the IBM logo are registered trademarks of International Business Machines Corporation in the United States, other countries, or both.

Microsoft and Windows are trademarks of Microsoft Corporation in the United States, other countries, or both.

Other company, product and service names may be trademarks or service marks of others.

References in this publication to IBM products and services do not imply that IBM intends to make them available in all countries in which IBM operates.

Any references in this information to non-IBM Web sites are provided for convenience only and do not in any manner serve as an endorsement of those Web sites. The materials at those Web sites are not part of the materials for this IBM product and use of those Web sites is at your own risk.

IBM reserves the right to alter specifications and other product information without prior notice.

Printed in the United States on recycled paper containing 10% recovered post-consumer fiber.